

25.04.2008 17:20 - 27.04.2008 13:20



	IP-		Cisco IP SLA	G. 711a		
	■	■	■	■	■	
IP SLA G 711a [10.0.3.252->62.61.7.2] SNMP Device Availability (%)	>=99 99,7%	<99 0%	<96 0%	<94 0%	<90 0,27%	2621
IP SLA G 711a [10.0.3.252->62.61.7.2] MOS	>=4 72,3%	<4 27,6%	<3 0,08%	<2 0,08%	<1 0%	2614
IP SLA G 711a [10.0.3.252->62.61.7.2] ICPIF	<=5 44,6%	>5 20,4%	>10 34,8%	>30 0,15%	>45 0,08%	2614
IP SLA G 711a [10.0.3.252->62.61.7.2] Delay (usec)	<=225 000 99,5%	>225 000 0,23%	>250 000 0,11%	>310 000 0,08%	>380 000 0,11%	2612
IP SLA G 711a [10.0.3.252->62.61.7.2] PacketLoss (%)	<=1 47,3%	>1 12,3%	>2 6,92%	>3 8,99%	>5 24,5%	2614
IP SLA G 711a [10.0.3.252->62.61.7.2] Jitter (usec)	<=50 000 37,2%	>50 000 31,1%	>60 000 22,9%	>80 000 5,16%	>100 000 3,71%	2614
IP SLA G 711a [10.0.3.252->62.61.7.2] The Number of Round Trip Operations	>=95 4,48%	<95 12,8%	<85 16,1%	<70 19,1%	<50 47,5%	2614
	IP- ()	0%	→→→ 2,29%	→→→ 9,16%	→→→ 29,5%	2621

(2)

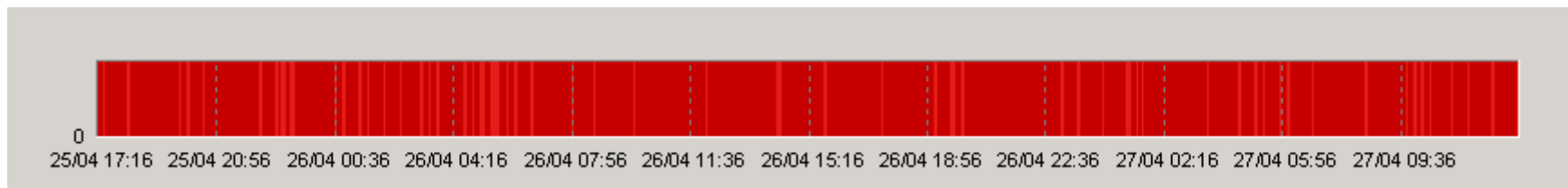
ProLAN

ProLAN.

PROLAN,

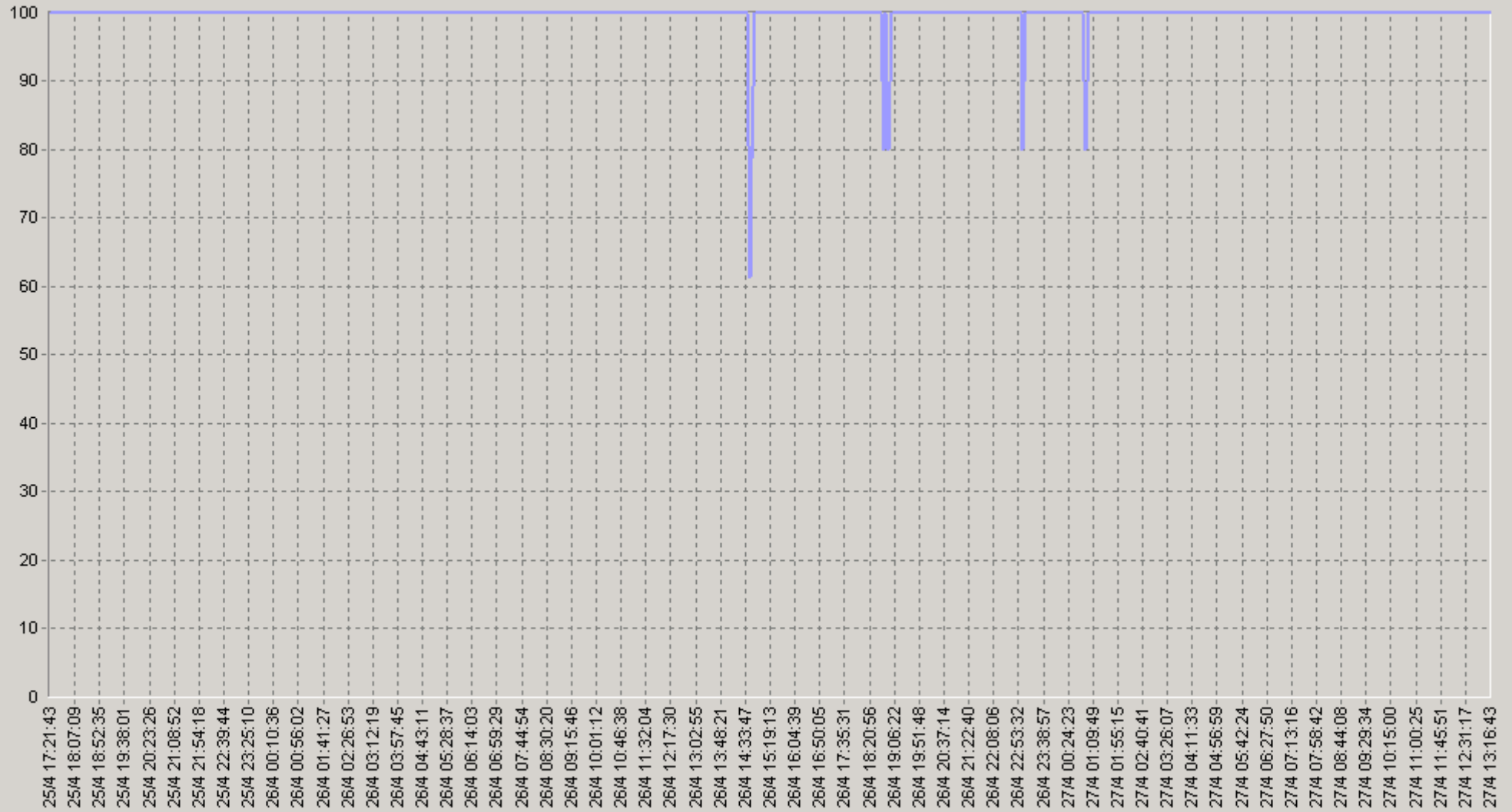
PROLAN
PARTNER@PROLAN.RU

« »



25.04.2008 17:20 - 27.04.2008 13:20

IP SLA G711a [10.0.3.252->62.61.7.2] SNMP Device Availability (%)



IP SLA G711a [10.0.3.252->62.61.7.2] SNMP Device Availability (%) (SLA-ON-SERVER3)

25.04.2008 17:20 - 27.04.2008 13:20

20. IP SLA G711a [10.0.3.252->62.61.7.2] SNMP Device Availability (%)

		75>	90>			75>	90>
00:00-00:20	100	100	100	06:00-06:20	100	100	100
00:20-00:40	100	100	100	06:20-06:40	100	100	100
00:40-01:00	97,4	100	100	06:40-07:00	100	100	100
01:00-01:20	100	100	100	07:00-07:20	100	100	100
01:20-01:40	100	100	100	07:20-07:40	100	100	100
01:40-02:00	100	100	100	07:40-08:00	100	100	100
02:00-02:20	100	100	100	08:00-08:20	100	100	100
02:20-02:40	100	100	100	08:20-08:40	100	100	100
02:40-03:00	100	100	100	08:40-09:00	100	100	100
03:00-03:20	100	100	100	09:00-09:20	100	100	100
03:20-03:40	100	100	100	09:20-09:40	100	100	100
03:40-04:00	100	100	100	09:40-10:00	100	100	100
04:00-04:20	100	100	100	10:00-10:20	100	100	100
04:20-04:40	100	100	100	10:20-10:40	100	100	100
04:40-05:00	100	100	100	10:40-11:00	100	100	100
05:00-05:20	100	100	100	11:00-11:20	100	100	100
05:20-05:40	100	100	100	11:20-11:40	100	100	100
05:40-06:00	100	100	100	11:40-12:00	100	100	100

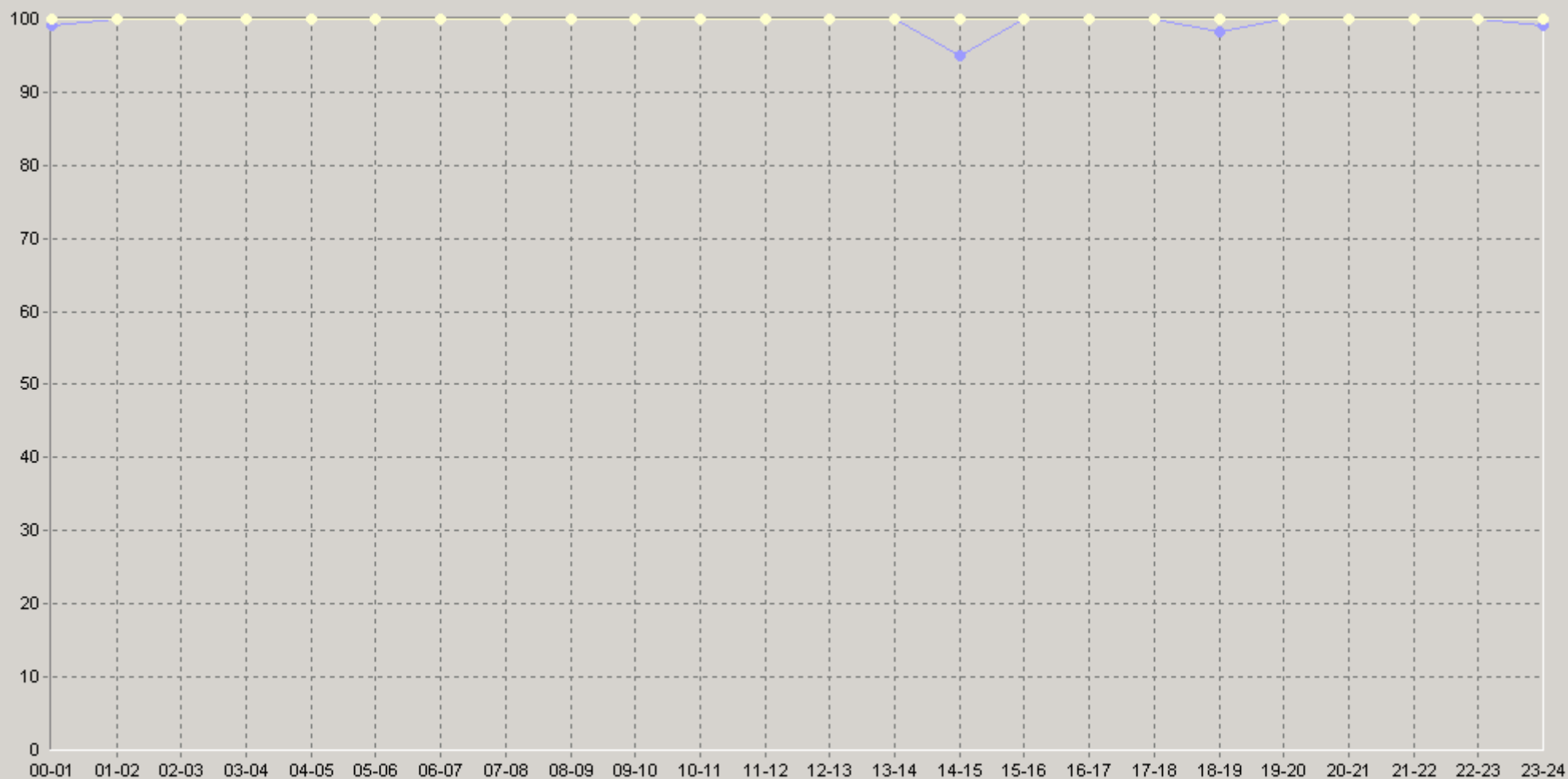
25.04.2008 17:20 - 27.04.2008 13:20

20 IP SLA G711a [10.0.3.252->62.61.7.2] SNMP Device Availability (%)

		75>	90>			75>	90>
12:00-12:20	100	100	100	18:00-18:20	100	100	100
12:20-12:40	100	100	100	18:20-18:40	100	100	100
12:40-13:00	100	100	100	18:40-19:00	95	100	100
13:00-13:20	100	100	100	19:00-19:20	100	100	100
13:20-13:40	100	100	100	19:20-19:40	100	100	100
13:40-14:00	100	100	100	19:40-20:00	100	100	100
14:00-14:20	100	100	100	20:00-20:20	100	100	100
14:20-14:40	100	100	100	20:20-20:40	100	100	100
14:40-15:00	85	100	0	20:40-21:00	100	100	100
15:00-15:20	100	100	100	21:00-21:20	100	100	100
15:20-15:40	100	100	100	21:20-21:40	100	100	100
15:40-16:00	100	100	100	21:40-22:00	100	100	100
16:00-16:20	100	100	100	22:00-22:20	100	100	100
16:20-16:40	100	100	100	22:20-22:40	100	100	100
16:40-17:00	100	100	100	22:40-23:00	100	100	100
17:00-17:20	100	100	100	23:00-23:20	97,2	100	100
17:20-17:40	100	100	100	23:20-23:40	100	100	100
17:40-18:00	100	100	100	23:40-00:00	100	100	100

25.04.2008 17:20 - 27.04.2008 13:20

60 IP SLA G711a [10.0.3.252->62.61.7.2] SNMP Device Availability (%)



◆ [BaseLine Avg] IP SLA G711a [10.0.3.252->62.61.7.2] SNMP Device Availability (%) (60) (SLA-ON-SERVER3)
 ◆ [BaseLine Percnt75 (>)] IP SLA G711a [10.0.3.252->62.61.7.2] SNMP Device Availability (%) (60) (SLA-ON-SERVER3)
 ◆ [BaseLine Percnt90 (>)] IP SLA G711a [10.0.3.252->62.61.7.2] SNMP Device Availability (%) (60) (SLA-ON-SERVER3)



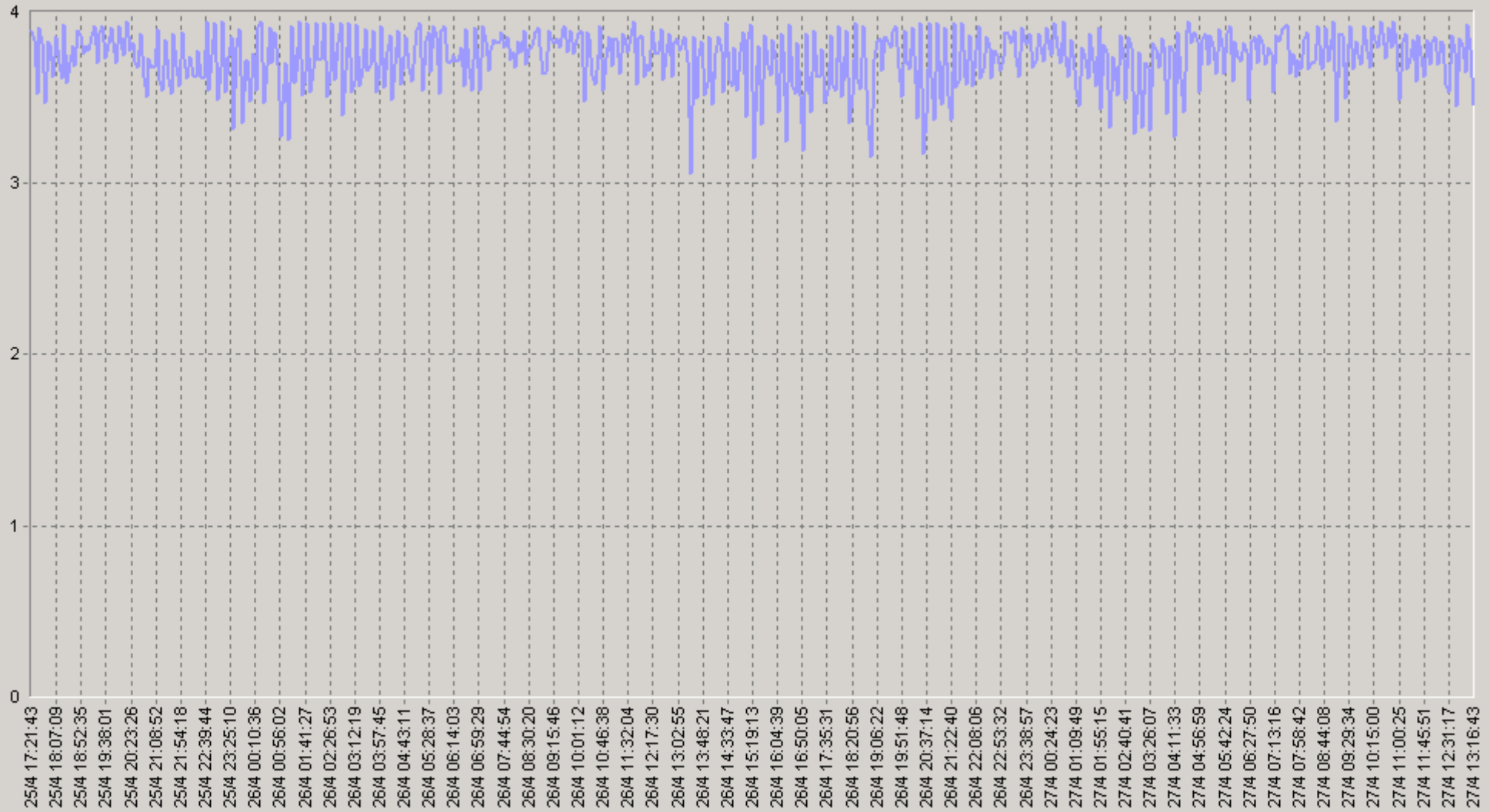
IP-

Cisco IP SLA

G.711a

25.04.2008 17:20 - 27.04.2008 13:20

IP SLA G711a [10.0.3.252->62.61.7.2] MOS



IP SLA G711a [10.0.3.252->62.61.7.2] MOS(SLA-ON-SERVER3)

25.04.2008 17:20 - 27.04.2008 13:20

20 IP SLA G711a [10.0.3.252->62.61.7.2] MOS

		75>	90>			75>	90>
00:00-00:20	4,14	4,06	3,6	06:00-06:20	4,11	3,96	3,68
00:20-00:40	4,16	4,06	3,8	06:20-06:40	4,12	4,15	3,5
00:40-01:00	4,05	3,96	3,5	06:40-07:00	4,11	4,06	3,5
01:00-01:20	4,01	3,57	3,45	07:00-07:20	4,11	3,88	3,5
01:20-01:40	4,07	3,88	3,5	07:20-07:40	4,24	4,15	4,06
01:40-02:00	4,06	3,88	3,5	07:40-08:00	4,13	4,06	3,6
02:00-02:20	4,12	4,06	3,6	08:00-08:20	4,14	4,06	3,8
02:20-02:40	4,05	3,88	3,5	08:20-08:40	4,15	4,06	3,8
02:40-03:00	4,02	3,5	3,5	08:40-09:00	4,18	4,06	3,88
03:00-03:20	4,03	3,88	3,6	09:00-09:20	4,16	4,15	3,6
03:20-03:40	4,04	3,8	3,5	09:20-09:40	4,15	4,15	3,8
03:40-04:00	4,06	3,88	3,5	09:40-10:00	4,19	4,15	3,96
04:00-04:20	4,1	3,96	3,6	10:00-10:20	4,17	4,06	3,88
04:20-04:40	4,06	3,88	3,5	10:20-10:40	4,15	4,06	3,88
04:40-05:00	4,12	4,06	3,5	10:40-11:00	4,18	4,15	3,68
05:00-05:20	4,19	4,06	3,88	11:00-11:20	4,12	3,96	3,8
05:20-05:40	4,18	4,15	3,96	11:20-11:40	4,18	4,15	3,96
05:40-06:00	4,15	4,15	3,68	11:40-12:00	4,13	4,06	3,64

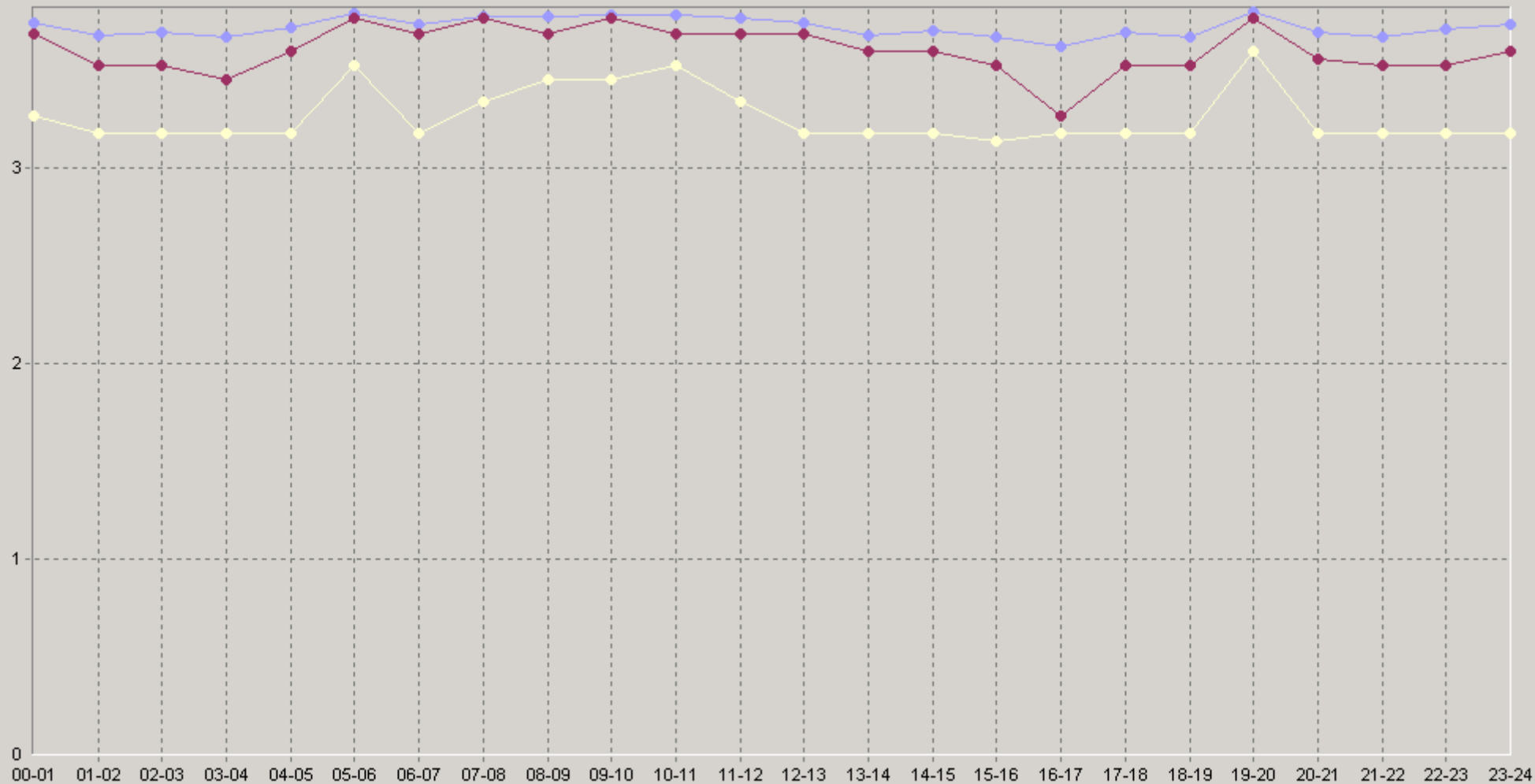
25.04.2008 17:20 - 27.04.2008 13:20

20 IP SLA G711a [10.0.3.252->62.61.7.2] MDS

		75>	90>			75>	90>
12:00-12:20	4,14	4,06	3,68	18:00-18:20	4,01	3,88	3,5
12:20-12:40	4,11	4,06	3,5	18:20-18:40	4,08	3,96	3,45
12:40-13:00	4,12	3,96	3,6	18:40-19:00	4,03	3,88	3,45
13:00-13:20	4,14	4,06	3,8	19:00-19:20	4,19	4,15	3,96
13:20-13:40	3,88	3,6	3,5	19:20-19:40	4,2	4,15	3,96
13:40-14:00	4,04	3,68	3,5	19:40-20:00	4,16	4,15	3,96
14:00-14:20	4,11	4,06	3,5	20:00-20:20	4,16	4,06	3,88
14:20-14:40	4,08	3,96	3,5	20:20-20:40	3,97	3,88	3,5
14:40-15:00	4,04	3,8	3,5	20:40-21:00	4,08	3,96	3,5
15:00-15:20	4,13	3,96	3,5	21:00-21:20	4,01	3,88	3,5
15:20-15:40	3,84	3,45	3,45	21:20-21:40	3,99	3,8	3,5
15:40-16:00	4,14	4,06	3,96	21:40-22:00	4,14	4,06	3,5
16:00-16:20	4,07	3,8	3,6	22:00-22:20	4,06	3,8	3,5
16:20-16:40	3,92	3,5	3,45	22:20-22:40	4,08	3,88	3,5
16:40-17:00	3,96	3,6	3,5	22:40-23:00	4,13	4,06	3,5
17:00-17:20	4	3,68	3,6	23:00-23:20	4,15	3,96	3,8
17:20-17:40	4,07	3,88	3,5	23:20-23:40	4,11	3,96	3,5
17:40-18:00	4,1	3,96	3,6	23:40-00:00	4,08	3,88	3,5

25.04.2008 17:20 - 27.04.2008 13:20

60 IP SLA G711a [10.0.3.252->62.61.7.2] MOS

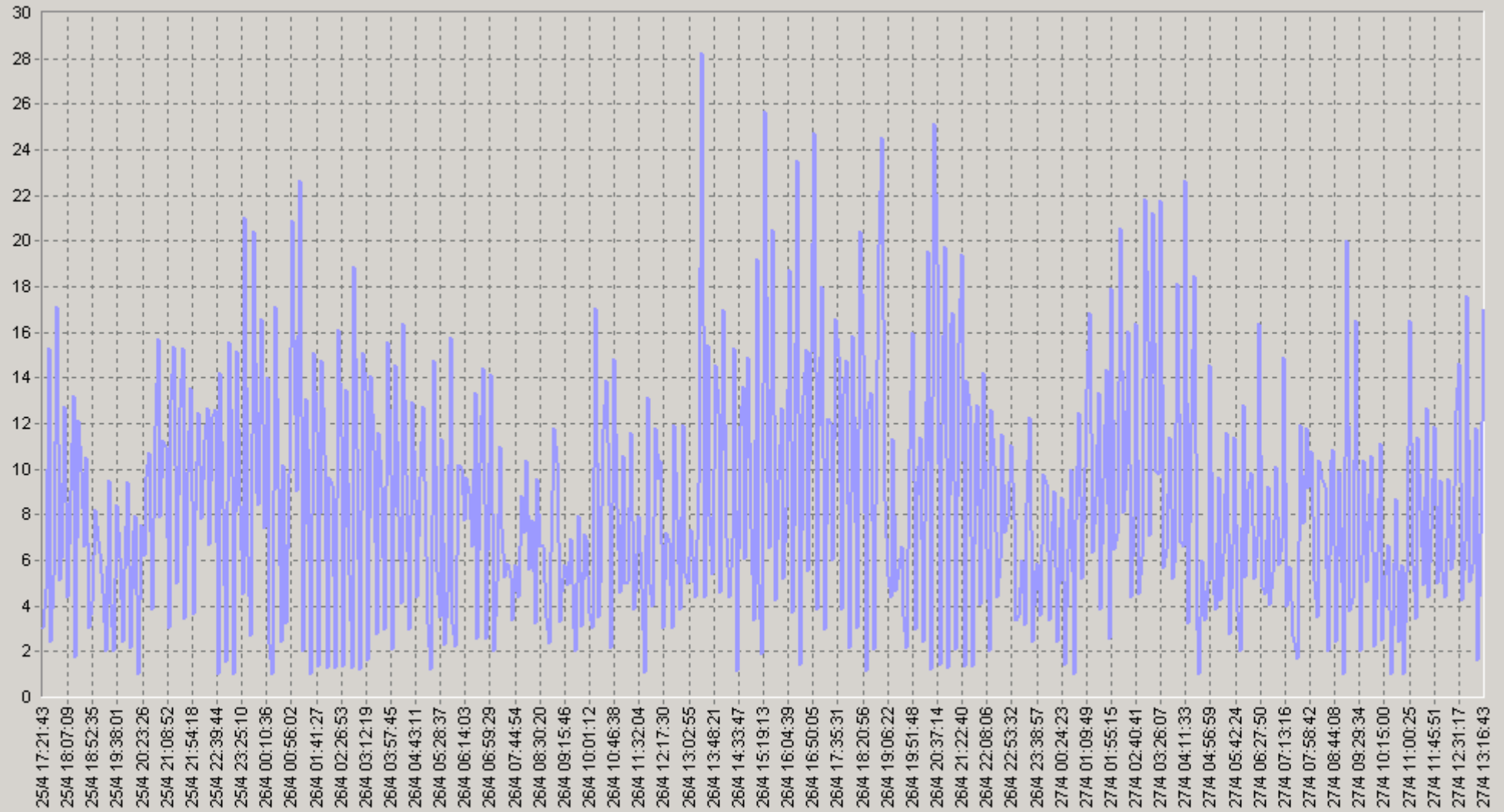


◆ [BaseLine Avg] IP SLA G711a [10.0.3.252->62.61.7.2] MOS(60)(SLA-ON-SERVER3)
 ◆ [BaseLine Percnt90 (>)] IP SLA G711a [10.0.3.252->62.61.7.2] MOS(60)(SLA-ON-SERVER3)

◆ [BaseLine Percnt75 (>)] IP SLA G711a [10.0.3.252->62.61.7.2] MOS(60)(SLA-ON-SERVER3)

25.04.2008 17:20 - 27.04.2008 13:20

IP SLA G711a [10.0.3.252->62.61.7.2] ICPIF



— IP SLA G711a [10.0.3.252->62.61.7.2] ICPIF(SLA-ON-SERVER3)

25.04.2008 17:20 - 27.04.2008 13:20

20 IP SLA G711a [10.0.3.252->62.61.7.2] ICMP

		75<	90<			75<	90<
00:00-00:20	7,33	11	23	06:00-06:20	8,62	11	18
00:20-00:40	6,83	11	18	06:20-06:40	7,78	8	25
00:40-01:00	9,76	11	25	06:40-07:00	8,28	11	25
01:00-01:20	10,8	18	26	07:00-07:20	8	16	25
01:20-01:40	9,41	16	25	07:20-07:40	4,63	8	11
01:40-02:00	10	16	25	07:40-08:00	7,75	11	23
02:00-02:20	7,93	11	23	08:00-08:20	7,6	11	18
02:20-02:40	10	16	25	08:20-08:40	7,3	11	18
02:40-03:00	10,8	25	25	08:40-09:00	6,35	11	16
03:00-03:20	10,7	16	23	09:00-09:20	6,83	8	23
03:20-03:40	10,4	18	25	09:20-09:40	7,15	8	18
03:40-04:00	9,73	16	25	09:40-10:00	6,03	8	14
04:00-04:20	8,48	14	23	10:00-10:20	6,7	11	16
04:20-04:40	9,53	16	25	10:20-10:40	7,13	11	16
04:40-05:00	8,04	11	24	10:40-11:00	5,93	8	21
05:00-05:20	5,93	11	14	11:00-11:20	8,3	14	18
05:20-05:40	6,28	8	14	11:20-11:40	6,43	8	14
05:40-06:00	7,03	8	18	11:40-12:00	7,43	11	22

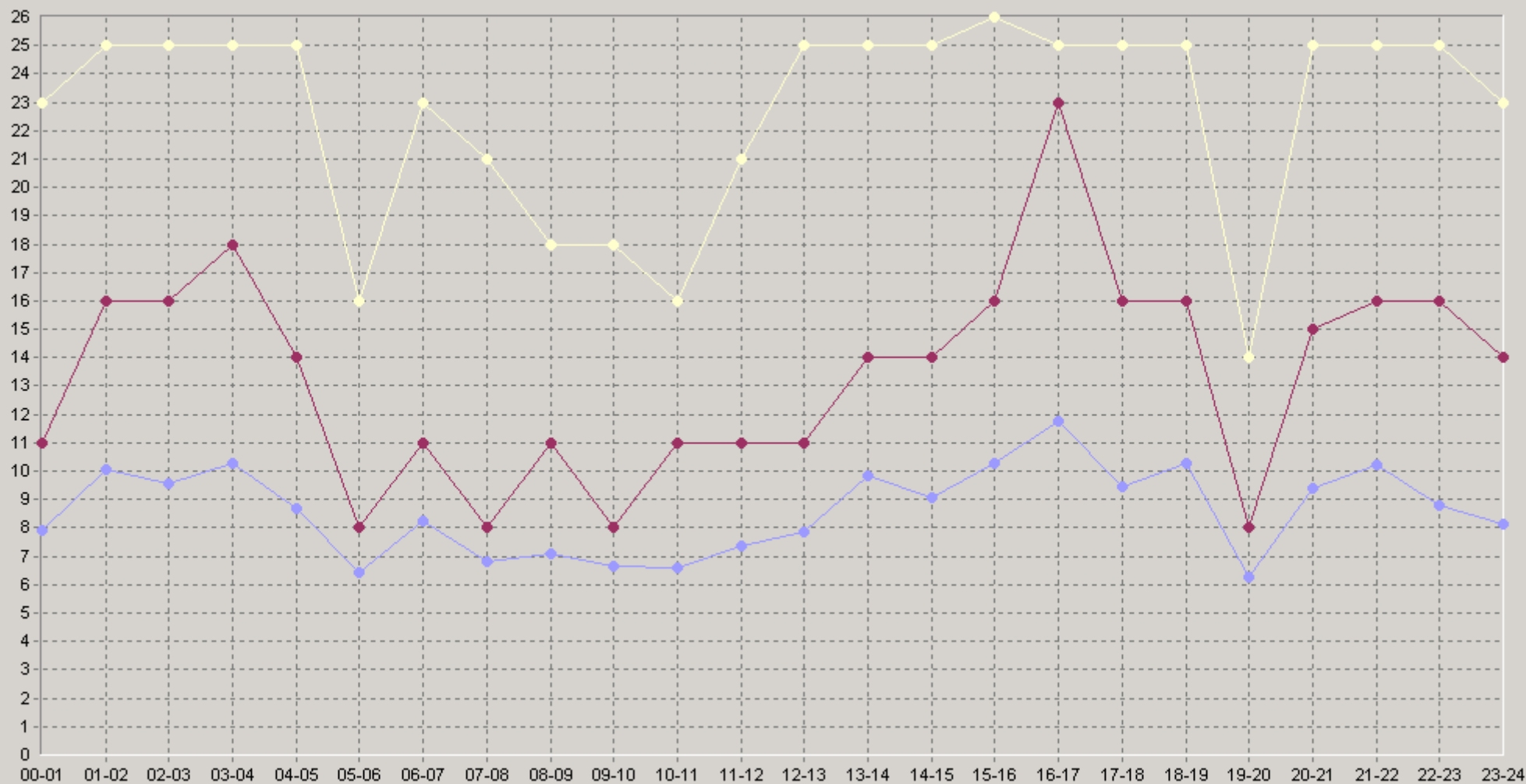
25.04.2008 17:20 - 27.04.2008 13:20

20 IP SLA G711a [10.0.3.252->62.61.7.2] ICMP

		75<	90<			75<	90<
12:00-12:20	7,33	11	21	18:00-18:20	11,5	16	25
12:20-12:40	8,15	11	25	18:20-18:40	9	14	26
12:40-13:00	8,1	14	23	18:40-19:00	10,4	14	25
13:00-13:20	7,5	11	18	19:00-19:20	6,1	8	14
13:20-13:40	14,4	23	25	19:20-19:40	5,63	8	14
13:40-14:00	10,1	21	25	19:40-20:00	7	8	14
14:00-14:20	8,25	11	25	20:00-20:20	6,7	11	16
14:20-14:40	8,9	14	25	20:20-20:40	12,4	16	25
14:40-15:00	10,3	18	21	20:40-21:00	9,05	14	25
15:00-15:20	7,4	14	25	21:00-21:20	11,5	16	25
15:20-15:40	15,6	26	26	21:20-21:40	12	18	25
15:40-16:00	7,8	11	14	21:40-22:00	7,28	11	25
16:00-16:20	9,65	18	23	22:00-22:20	9,78	18	25
16:20-16:40	13,3	25	26	22:20-22:40	9,1	16	25
16:40-17:00	12,3	23	25	22:40-23:00	7,53	11	23
17:00-17:20	11,4	21	23	23:00-23:20	6,97	14	17
17:20-17:40	9,46	16	25	23:20-23:40	8,37	14	25
17:40-18:00	8,55	14	23	23:40-00:00	8,9	16	25

25.04.2008 17:20 - 27.04.2008 13:20

60 IP SLA G711a [10.0.3.252->62.61.7.2] ICMP

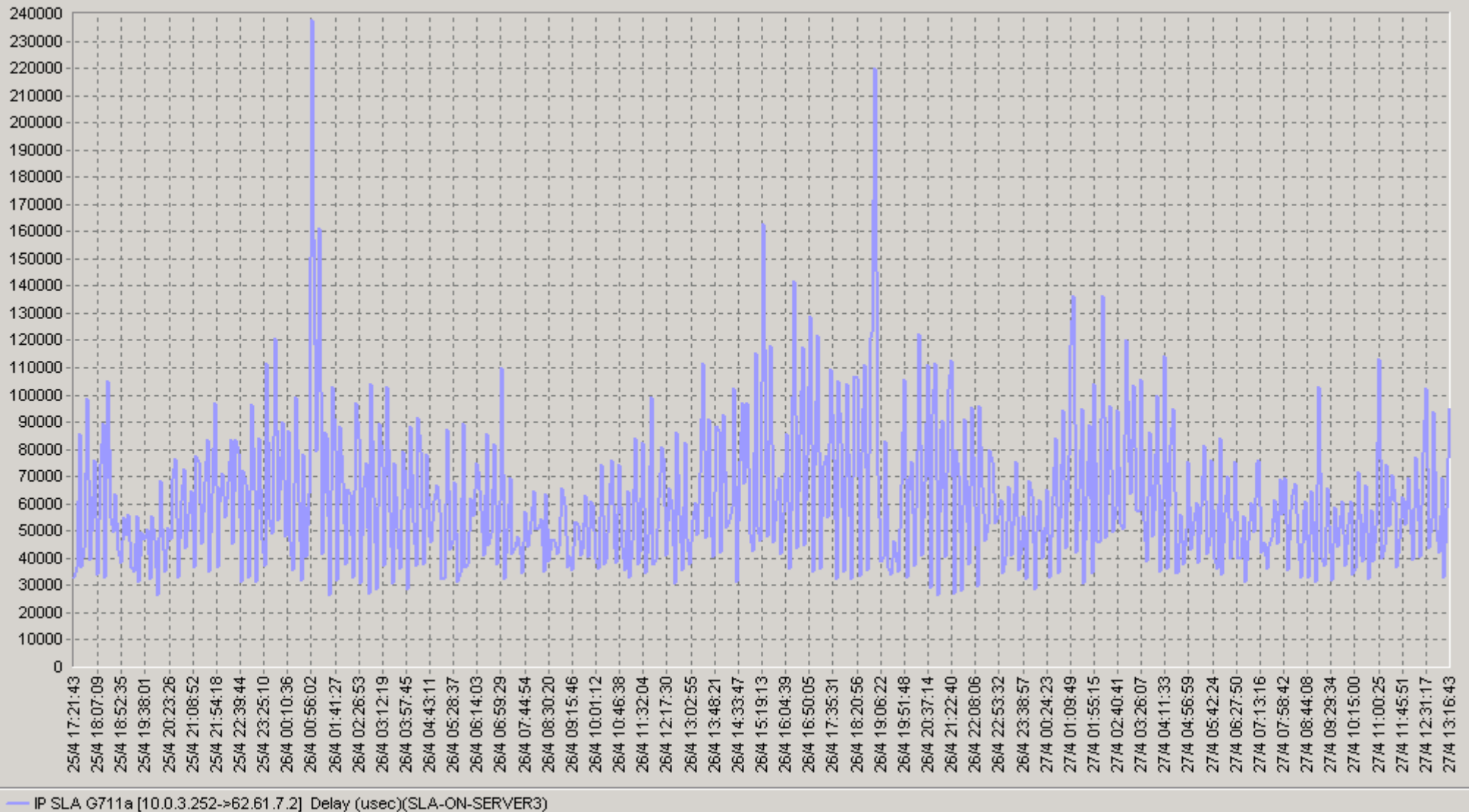


◆ [BaseLine Avg] IP SLA G711a [10.0.3.252->62.61.7.2] ICMP(60)(SLA-ON-SERVER3)
 ◆ [BaseLine Percnt90 (<=)] IP SLA G711a [10.0.3.252->62.61.7.2] ICMP(60)(SLA-ON-SERVER3)

◆ [BaseLine Percnt75 (<=)] IP SLA G711a [10.0.3.252->62.61.7.2] ICMP(60)(SLA-ON-SERVER3)

25.04.2008 17:20 - 27.04.2008 13:20

IP SLA G711a [10.0.3.252->62.61.7.2] Delay (usec)



25.04.2008 17:20 - 27.04.2008 13:20

20 IP SLA G711a [10.0.3.252->62.61.7.2] Delay (usec)

		75<	90<			75<	90<
00:00-00:20	55 396	71 286	110 101	06:00-06:20	58 805	72 706	98 470
00:20-00:40	55 750	66 949	102 189	06:20-06:40	53 929	57 940	104 017
00:40-01:00	90 468	92 378	162 821	06:40-07:00	52 767	64 481	96 768
01:00-01:20	91 065	117 134	173 250	07:00-07:20	63 281	92 773	105 065
01:20-01:40	68 320	99 767	116 187	07:20-07:40	43 982	52 175	63 750
01:40-02:00	68 127	87 958	126 976	07:40-08:00	52 107	63 058	80 922
02:00-02:20	58 955	69 215	95 914	08:00-08:20	56 014	70 118	99 537
02:20-02:40	68 784	87 600	111 615	08:20-08:40	49 037	55 216	79 659
02:40-03:00	73 035	110 889	143 655	08:40-09:00	49 194	66 880	91 012
03:00-03:20	67 019	94 707	113 313	09:00-09:20	48 690	53 137	82 882
03:20-03:40	64 759	91 110	109 553	09:20-09:40	50 216	61 364	77 246
03:40-04:00	65 403	90 250	118 569	09:40-10:00	51 778	66 411	86 218
04:00-04:20	56 554	66 698	107 427	10:00-10:20	46 633	61 833	79 811
04:20-04:40	66 305	96 533	122 899	10:20-10:40	54 257	63 226	90 460
04:40-05:00	55 582	68 986	102 117	10:40-11:00	48 755	46 118	82 125
05:00-05:20	49 736	55 274	97 807	11:00-11:20	60 292	81 652	115 625
05:20-05:40	53 009	58 422	94 854	11:20-11:40	52 115	63 908	98 179
05:40-06:00	54 458	64 833	100 975	11:40-12:00	58 930	76 828	96 641

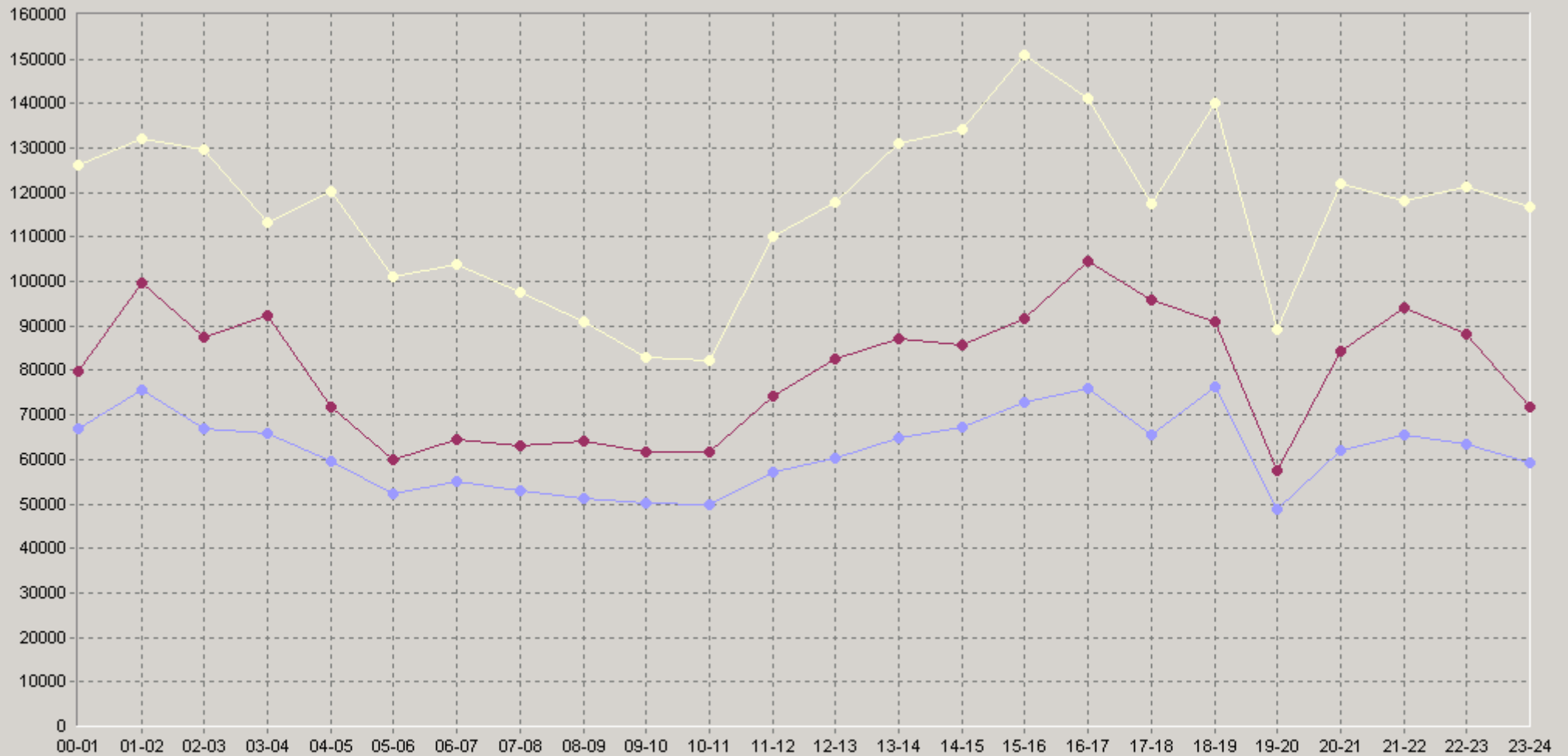
25.04.2008 17:20 - 27.04.2008 13:20

20 IP SLA G711a [10.0.3.252->62.61.7.2] Delay (usec)

		75<	90<			75<	90<
12:00-12:20	59 694	73 211	101 500	18:00-18:20	75 377	101 905	131 696
12:20-12:40	63 262	86 409	123 378	18:20-18:40	70 824	81 442	163 778
12:40-13:00	58 128	79 048	114 438	18:40-19:00	83 464	78 917	167 880
13:00-13:20	57 037	75 157	97 059	19:00-19:20	50 845	55 732	96 014
13:20-13:40	78 879	112 759	135 796	19:20-19:40	43 490	51 036	68 901
13:40-14:00	67 589	87 065	134 553	19:40-20:00	52 397	58 375	89 253
14:00-14:20	59 993	75 065	106 180	20:00-20:20	55 122	66 614	101 732
14:20-14:40	67 464	76 750	118 180	20:20-20:40	73 502	92 280	125 117
14:40-15:00	75 518	105 681	142 882	20:40-21:00	58 203	62 203	122 165
15:00-15:20	64 240	88 013	132 126	21:00-21:20	71 051	96 250	110 957
15:20-15:40	100 364	154 542	162 410	21:20-21:40	69 158	89 768	118 216
15:40-16:00	54 031	64 317	80 978	21:40-22:00	56 837	90 018	115 969
16:00-16:20	59 453	83 124	111 351	22:00-22:20	68 893	91 737	125 326
16:20-16:40	96 761	141 298	166 859	22:20-22:40	64 877	96 158	121 291
16:40-17:00	71 639	101 422	137 091	22:40-23:00	56 321	64 881	94 844
17:00-17:20	76 740	95 729	115 141	23:00-23:20	56 574	70 479	105 450
17:20-17:40	64 374	91 333	125 359	23:20-23:40	56 817	67 720	116 689
17:40-18:00	61 090	100 022	115 141	23:40-00:00	64 086	84 867	120 405

25.04.2008 17:20 - 27.04.2008 13:20

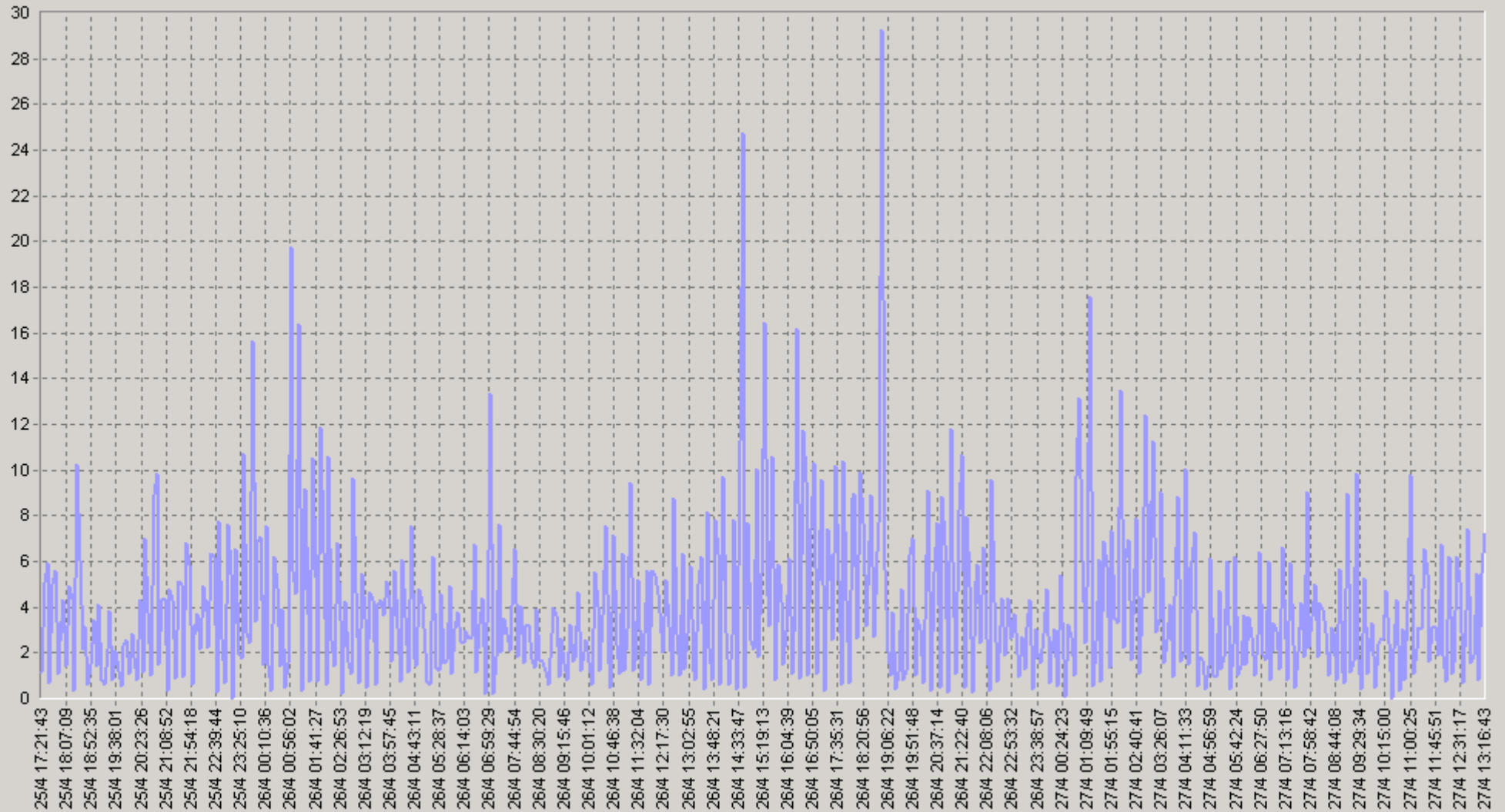
60 IP SLA G711a [10.0.3.252->62.61.7.2] Delay (usec)



◆ [BaseLine Avg] IP SLA G711a [10.0.3.252->62.61.7.2] Delay (usec)(60)(SLA-ON-SERVER3)
 ◆ [BaseLine Percnt75 (<=)] IP SLA G711a [10.0.3.252->62.61.7.2] Delay (usec)(60)(SLA-ON-SERVER3)
 ◆ [BaseLine Percnt90 (<=)] IP SLA G711a [10.0.3.252->62.61.7.2] Delay (usec)(60)(SLA-ON-SERVER3)

25.04.2008 17:20 - 27.04.2008 13:20

IP SLA G711a [10.0.3.252->62.61.7.2] Packet Loss (%)



— IP SLA G711a [10.0.3.252->62.61.7.2] Packet Loss (%)(SLA-ON-SERVER3)

25.04.2008 17:20 - 27.04.2008 13:20

2Q IP SLA G711a [10.0.3.252->62.61.7.2] Packet Loss (%)

		75<	90<			75<	90<
00:00-00:20	2,85	3	7	06:00-06:20	2,58	3	6
00:20-00:40	3,28	6	8	06:20-06:40	3,18	4	10
00:40-01:00	6,45	4	18	06:40-07:00	3,4	5	10
01:00-01:20	6,42	9	20	07:00-07:20	4,53	5	15
01:20-01:40	4,87	6	10	07:20-07:40	2,78	3	9
01:40-02:00	5,4	6	13	07:40-08:00	4,08	4	11
02:00-02:20	4,83	6	14	08:00-08:20	3,08	3	11
02:20-02:40	4,35	6	10	08:20-08:40	2,45	3	5
02:40-03:00	5,33	10	13	08:40-09:00	2,2	3	7
03:00-03:20	4,38	6	9	09:00-09:20	2,83	3	8
03:20-03:40	3,77	6	10	09:20-09:40	3	3	9
03:40-04:00	4,43	7	13	09:40-10:00	2,13	3	5
04:00-04:20	3,28	4	8	10:00-10:20	3,03	4	8
04:20-04:40	4,25	8	12	10:20-10:40	2,83	3	6
04:40-05:00	2,67	3	7	10:40-11:00	2,63	2	8
05:00-05:20	2,13	2	3	11:00-11:20	4,3	5	12
05:20-05:40	2,49	3	7	11:20-11:40	3,18	3	10
05:40-06:00	2,85	3	6	11:40-12:00	3,8	6	11

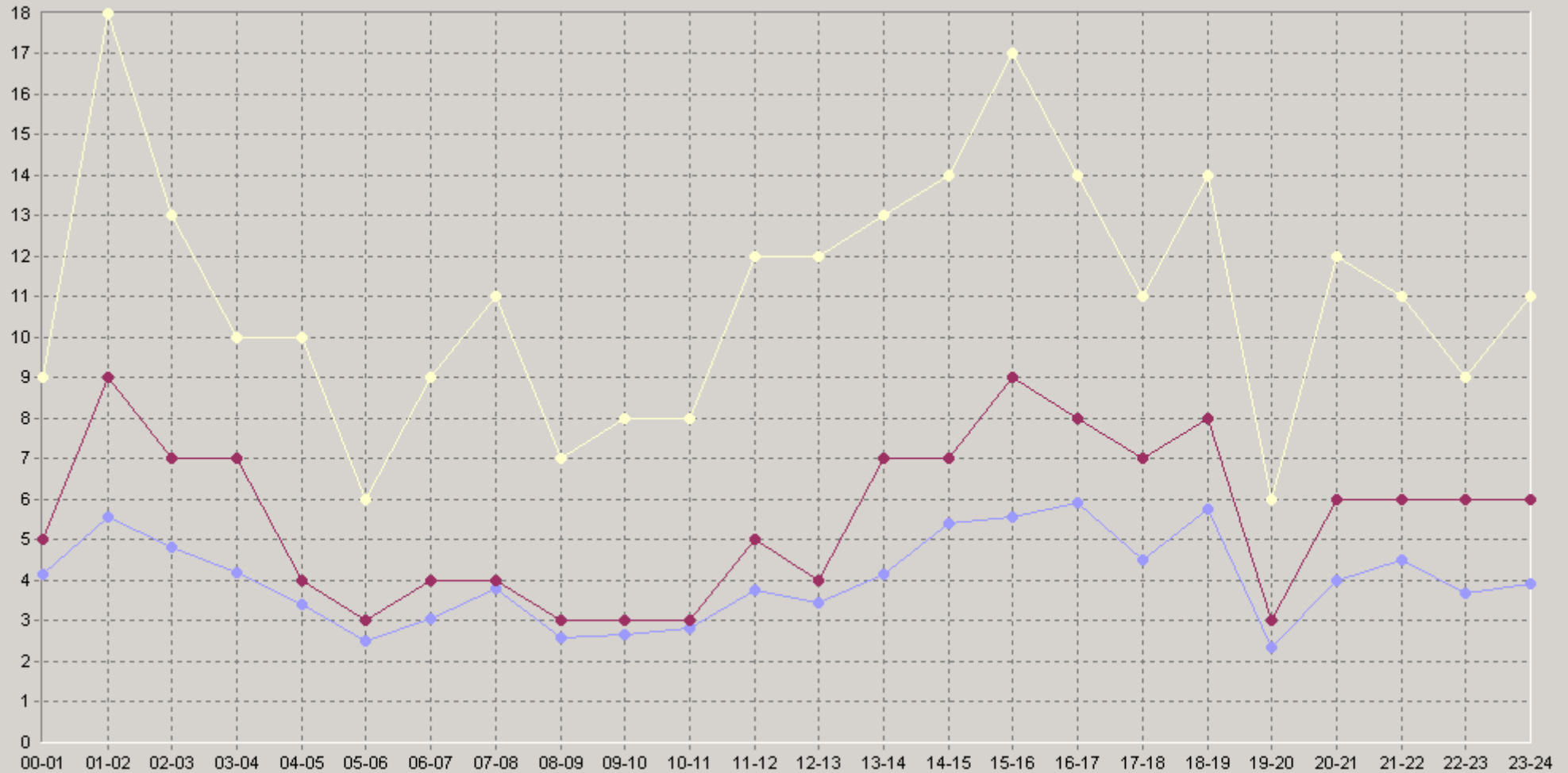
25.04.2008 17:20 - 27.04.2008 13:20

2Q IP SLA G711a [10.0.3.252->62.61.7.2] Packet Loss (%)

		75<	90<			75<	90<
12:00-12:20	3,13	3	7	18:00-18:20	5,63	8	13
12:20-12:40	3,95	5	14	18:20-18:40	5,43	7	18
12:40-13:00	3,33	4	8	18:40-19:00	6,29	6	12
13:00-13:20	3,7	6	10	19:00-19:20	2,3	2	6
13:20-13:40	4,95	8	13	19:20-19:40	2,03	2	4
13:40-14:00	4,3	7	14	19:40-20:00	2,78	4	6
14:00-14:20	3,45	4	11	20:00-20:20	2,53	3	6
14:20-14:40	5,6	7	14	20:20-20:40	4,85	7	13
14:40-15:00	7,53	8	15	20:40-21:00	4,65	8	13
15:00-15:20	4,9	6	14	21:00-21:20	5,3	6	14
15:20-15:40	8,7	15	17	21:20-21:40	4,8	5	9
15:40-16:00	3,05	4	7	21:40-22:00	3,45	5	10
16:00-16:20	3,3	5	8	22:00-22:20	4,3	7	10
16:20-16:40	9,55	16	22	22:20-22:40	3,65	6	9
16:40-17:00	4,95	9	11	22:40-23:00	3,09	4	9
17:00-17:20	5,65	8	10	23:00-23:20	3,16	5	8,5
17:20-17:40	4,59	6	13	23:20-23:40	3,5	6	10
17:40-18:00	3,85	6	9	23:40-00:00	5,03	7	15

25.04.2008 17:20 - 27.04.2008 13:20

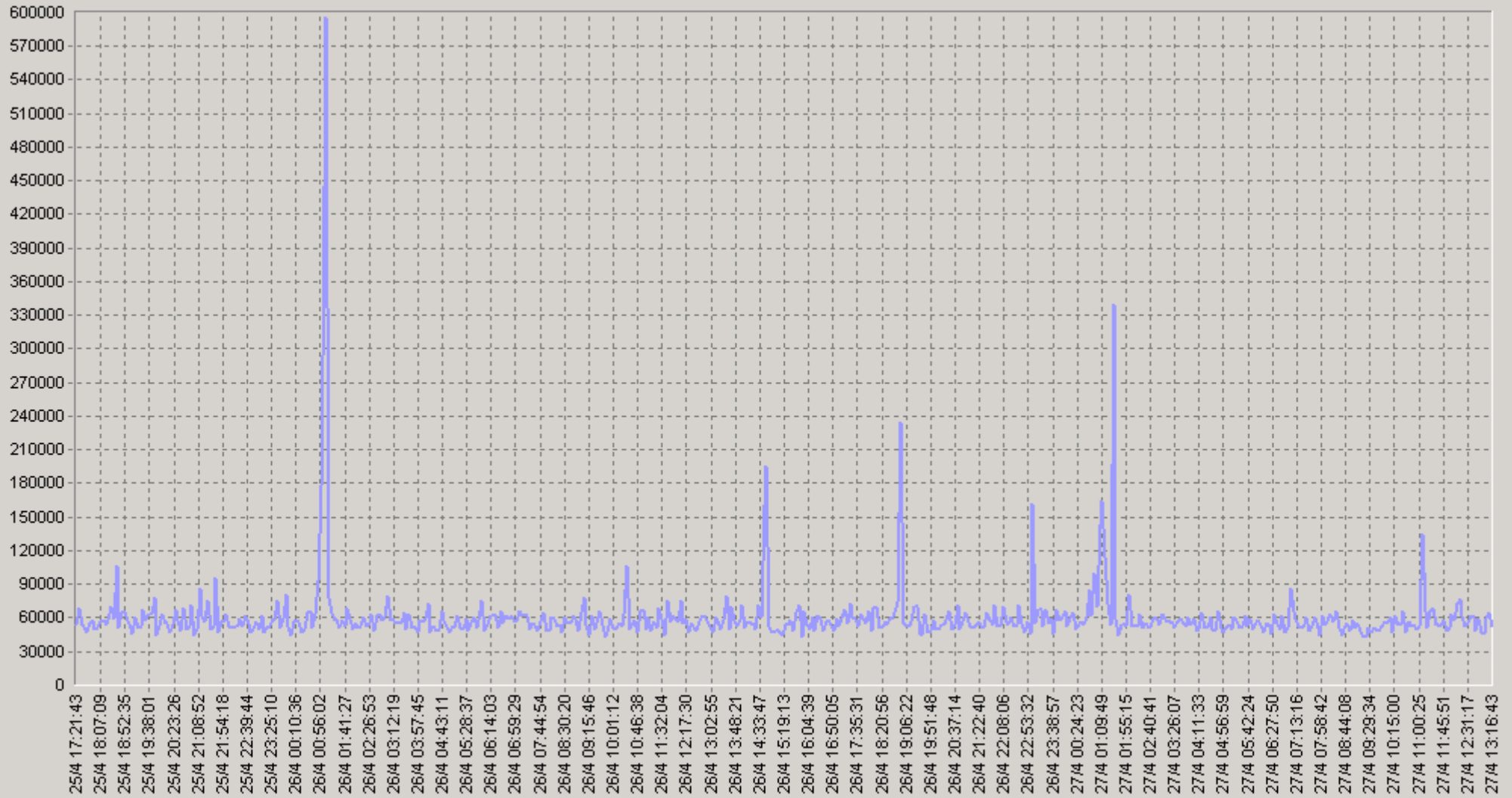
60 IP SLA G711a [10.0.3.252->62.61.7.2] PacketLoss (%)



◆ [BaseLine Avg] IP SLA G711a [10.0.3.252->62.61.7.2] Packet Loss (%) (60)(SLA-ON-SERVER3)
 ◆ [BaseLine Percnt75 (<=)] IP SLA G711a [10.0.3.252->62.61.7.2] Packet Loss (%) (60)(SLA-ON-SERVER3)
 ◆ [BaseLine Percnt90 (<=)] IP SLA G711a [10.0.3.252->62.61.7.2] Packet Loss (%) (60)(SLA-ON-SERVER3)

25.04.2008 17:20 - 27.04.2008 13:20

IP SLA G711a [10.0.3.252->62.61.7.2] Jitter (usec)



— IP SLA G711a [10.0.3.252->62.61.7.2] Jitter (usec)(SLA-ON-SERVER3)

25.04.2008 17:20 - 27.04.2008 13:20

20 IP SLA G711a [10.0.3.252->62.61.7.2] Jitter (usec)

		75<	90<			75<	90<
00:00-00:20	57 358	62 182	78 800	06:00-06:20	55 255	60 833	71 615
00:20-00:40	55 230	62 182	72 071	06:20-06:40	56 439	61 864	79 913
00:40-01:00	88 684	89 714	183 000	06:40-07:00	56 471	61 897	71 167
01:00-01:20	189 698	170 483	303 571	07:00-07:20	64 201	67 917	81 333
01:20-01:40	87 106	64 688	79 760	07:20-07:40	53 610	61 333	65 095
01:40-02:00	54 363	63 107	66 889	07:40-08:00	53 419	59 533	67 231
02:00-02:20	57 490	60 571	73 200	08:00-08:20	57 582	63 458	76 947
02:20-02:40	54 626	60 739	69 000	08:20-08:40	54 462	61 400	74 636
02:40-03:00	59 232	66 300	79 818	08:40-09:00	54 619	60 074	73 077
03:00-03:20	60 470	64 429	81 938	09:00-09:20	54 534	56 111	73 429
03:20-03:40	56 197	64 083	71 600	09:20-09:40	54 090	59 531	71 667
03:40-04:00	54 723	61 393	69 818	09:40-10:00	52 095	56 688	62 478
04:00-04:20	58 555	64 538	79 455	10:00-10:20	54 441	58 467	67 381
04:20-04:40	51 257	56 731	66 200	10:20-10:40	62 075	64 111	75 000
04:40-05:00	54 875	62 100	80 143	10:40-11:00	56 643	62 818	77 600
05:00-05:20	53 899	58 800	73 800	11:00-11:20	65 362	56 636	72 037
05:20-05:40	54 833	59 929	66 000	11:20-11:40	58 098	65 120	75 786
05:40-06:00	57 713	65 158	73 154	11:40-12:00	58 073	64 478	77 583

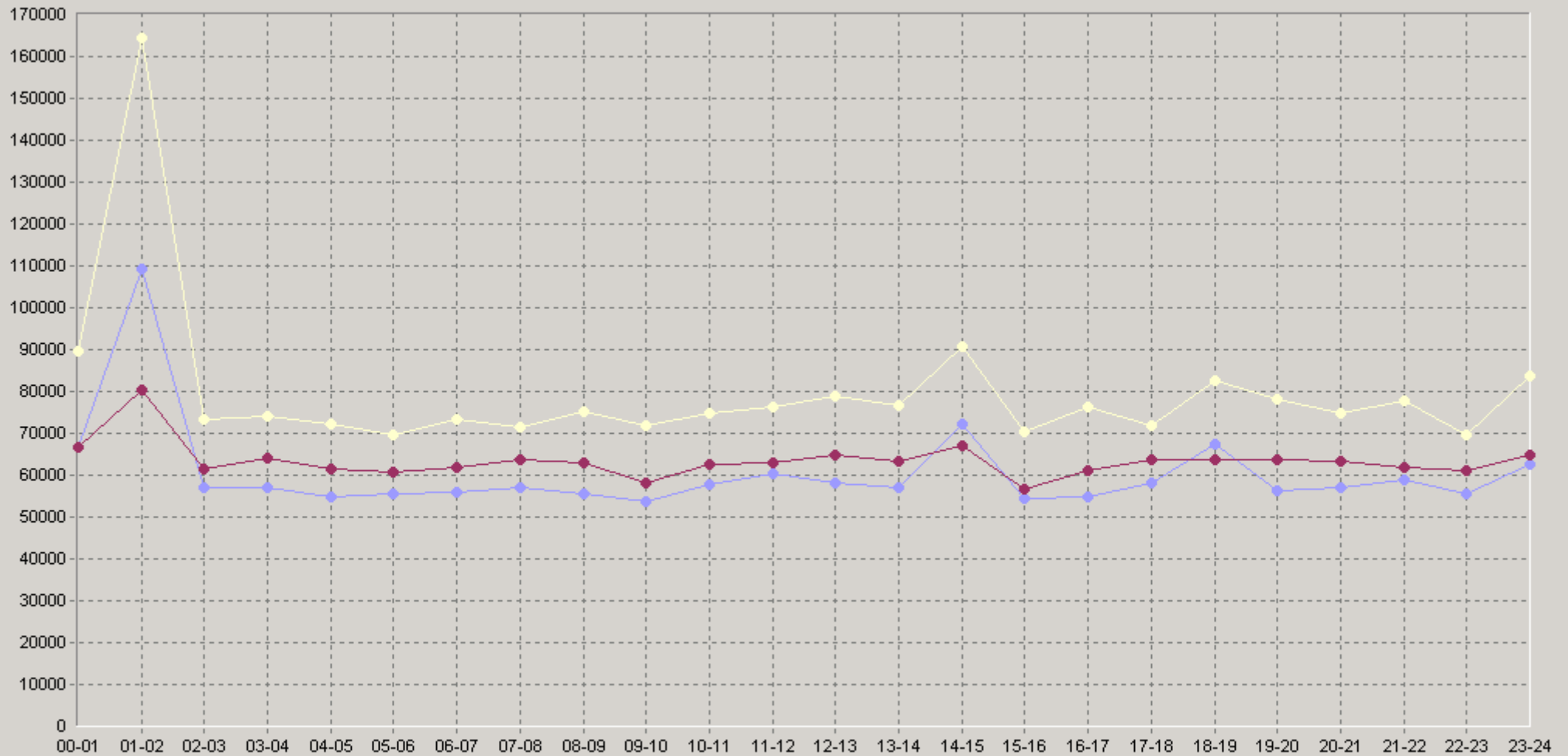
25.04.2008 17:20 - 27.04.2008 13:20

20: IP SLA G711a [10.0.3.252->62.61.7.2] Jitter (usec)

		75<	90<			75<	90<
12:00-12:20	65 139	74 500	93 944	18:00-18:20	57 353	61 600	66 103
12:20-12:40	53 510	61 593	68 467	18:20-18:40	63 913	66 412	79 818
12:40-13:00	56 331	62 267	79 071	18:40-19:00	81 412	64 143	97 333
13:00-13:20	54 980	63 222	73 211	19:00-19:20	52 986	60 750	65 800
13:20-13:40	59 072	62 900	68 833	19:20-19:40	58 986	67 333	84 889
13:40-14:00	59 260	58 750	78 545	19:40-20:00	56 820	58 000	85 294
14:00-14:20	58 572	65 400	79 077	20:00-20:20	53 796	57 455	70 440
14:20-14:40	58 972	67 136	73 524	20:20-20:40	56 711	61 895	70 000
14:40-15:00	103 526	59 778	189 500	20:40-21:00	60 886	65 333	78 500
15:00-15:20	47 459	51 917	54 500	21:00-21:20	56 990	62 050	75 000
15:20-15:40	54 116	56 526	65 846	21:20-21:40	57 354	56 759	73 550
15:40-16:00	61 447	60 385	112 333	21:40-22:00	61 805	63 222	77 813
16:00-16:20	53 565	55 444	69 125	22:00-22:20	56 451	62 400	71 435
16:20-16:40	56 564	62 600	76 652	22:20-22:40	58 563	67 071	73 750
16:40-17:00	54 709	59 313	75 000	22:40-23:00	51 561	52 848	62 778
17:00-17:20	58 335	64 389	72 571	23:00-23:20	69 782	64 250	89 667
17:20-17:40	59 144	60 567	71 867	23:20-23:40	59 598	66 438	81 765
17:40-18:00	57 134	65 043	70 333	23:40-00:00	59 639	63 171	75 059

25.04.2008 17:20 - 27.04.2008 13:20

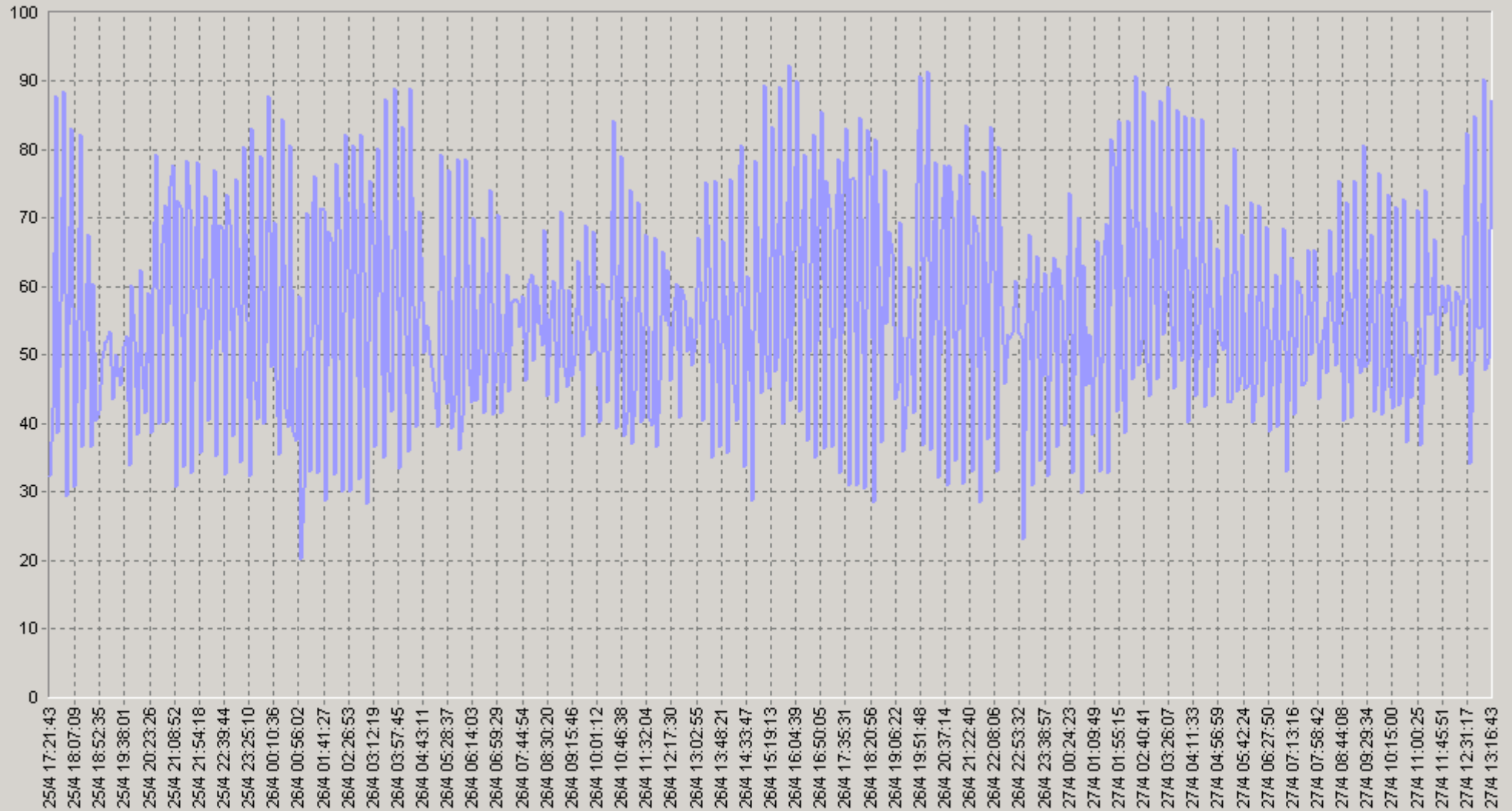
60 IP SLA G711a [10.0.3.252->62.61.7.2] Jitter (usec)



◆ [BaseLine Avg] IP SLA G711a [10.0.3.252->62.61.7.2] Jitter (usec)(60)(SLA-ON-SERVER3)
 ● [BaseLine Percnt75 (<=)] IP SLA G711a [10.0.3.252->62.61.7.2] Jitter (usec)(60)(SLA-ON-SERVER3)
 ● [BaseLine Percnt90 (<=)] IP SLA G711a [10.0.3.252->62.61.7.2] Jitter (usec)(60)(SLA-ON-SERVER3)

25.04.2008 17:20 - 27.04.2008 13:20

IP SLA G711a [10.0.3.252->62.61.7.2] The Number of Round Trip Operations



— IP SLA G711a [10.0.3.252->62.61.7.2] The Number of Round Trip Operations(SLA-ON-SERVER3)

25.04.2008 17:20 - 27.04.2008 13:20

2Q IP SLA G711a [10.0.3.252->62.61.7.2] The Number of Round Trip Operations

		75>	90>			75>	90>
00:00-00:20	55,2	36	33	06:00-06:20	55	39	33
00:20-00:40	55,1	36	32	06:20-06:40	52,2	39	32
00:40-01:00	52,2	35	24	06:40-07:00	54,2	39	33
01:00-01:20	44,1	25	13	07:00-07:20	52	36	26
01:20-01:40	57,4	33	26	07:20-07:40	54,5	42	34
01:40-02:00	64,4	42	30	07:40-08:00	56,6	38	32
02:00-02:20	54,8	32	28	08:00-08:20	53,1	37	32
02:20-02:40	62,9	37	28	08:20-08:40	59,1	42	38
02:40-03:00	61,8	36	30	08:40-09:00	53,8	37	31
03:00-03:20	57,1	34	25	09:00-09:20	52,2	40	32
03:20-03:40	63,9	32	26	09:20-09:40	55,8	39	31
03:40-04:00	63,4	37	31	09:40-10:00	55,7	39	36
04:00-04:20	53,6	32	28	10:00-10:20	51,6	39	33
04:20-04:40	60,9	36	32	10:20-10:40	56,6	42	33
04:40-05:00	56,6	42	30	10:40-11:00	49	34	29
05:00-05:20	52,8	39	31	11:00-11:20	56,7	40	30
05:20-05:40	53,4	36	32	11:20-11:40	51,9	38	33
05:40-06:00	54	38	32	11:40-12:00	53,4	37	32

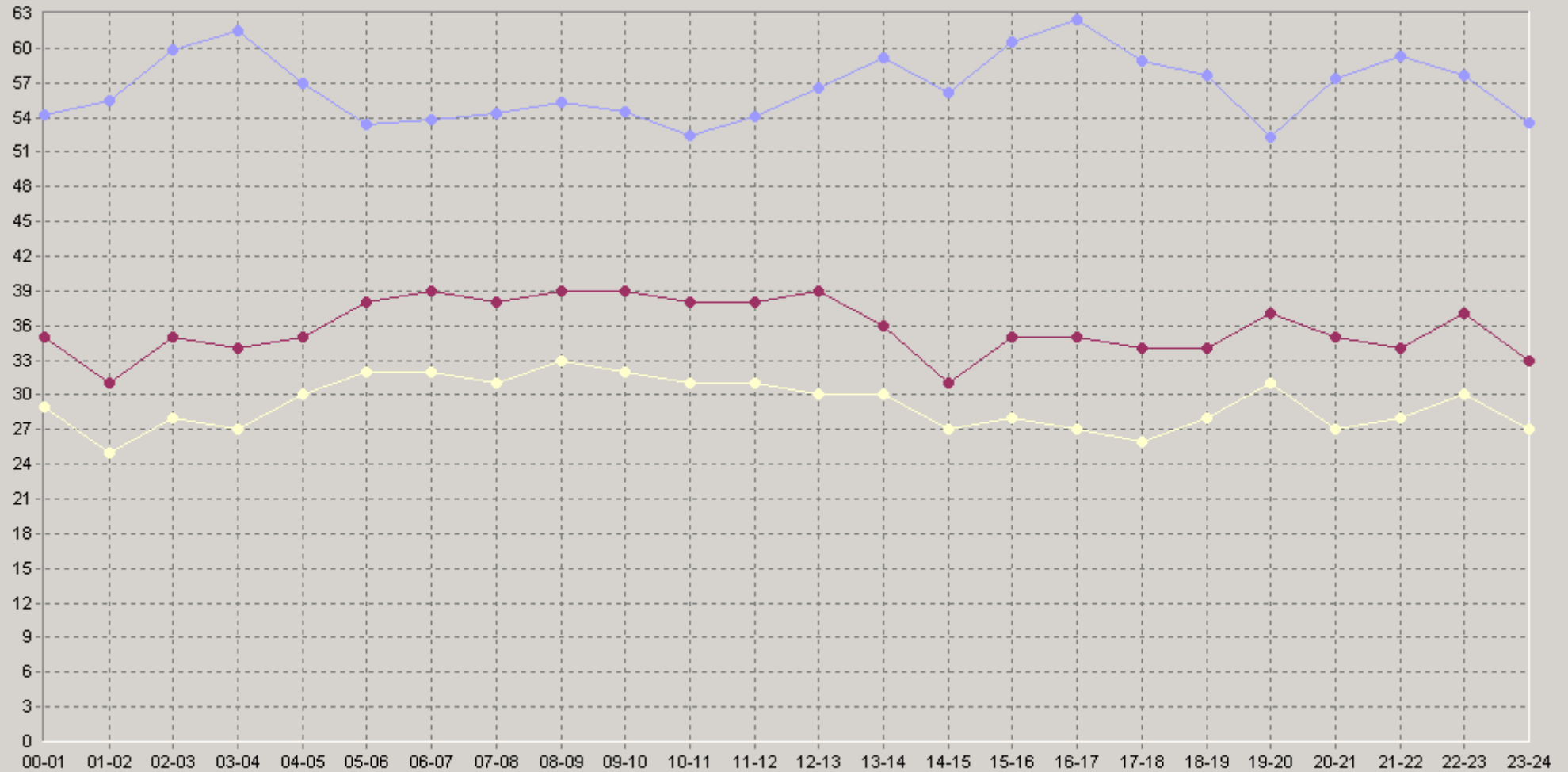
25.04.2008 17:20 - 27.04.2008 13:20

2Q IP SLA G711a [10.0.3.252->62.61.7.2] The Number of Round Trip Operations

		75>	90>			75>	90>
12:00-12:20	55,8	39	32	18:00-18:20	64,6	36	29
12:20-12:40	56,2	37	29	18:20-18:40	55,9	34	28
12:40-13:00	57,6	39	32	18:40-19:00	52,1	36	28
13:00-13:20	61	43	33	19:00-19:20	52,8	38	32
13:20-13:40	62,3	38	32	19:20-19:40	49,2	36	29
13:40-14:00	52,4	34	29	19:40-20:00	54,8	36	31
14:00-14:20	49,5	30	27	20:00-20:20	57	38	27
14:20-14:40	63,6	44	30	20:20-20:40	62	39	29
14:40-15:00	55,2	29	12	20:40-21:00	53,3	34	25
15:00-15:20	57,6	35	28	21:00-21:20	66,1	42	29
15:20-15:40	67,4	40	30	21:20-21:40	60,7	39	31
15:40-16:00	56,8	35	28	21:40-22:00	51,3	29	27
16:00-16:20	65,4	40	30	22:00-22:20	62,5	42	30
16:20-16:40	65,5	44	27	22:20-22:40	56,2	36	31
16:40-17:00	56,4	31	26	22:40-23:00	54,1	37	30
17:00-17:20	63,4	40	33	23:00-23:20	52,6	31	22
17:20-17:40	59,3	34	26	23:20-23:40	53,5	32	27
17:40-18:00	56,1	32	24	23:40-00:00	54,4	35	28

25.04.2008 17:20 - 27.04.2008 13:20

60 IP SLA G711a [10.0.3.252->62.61.7.2] The Number of Round Trip Operations



◆ [BaseLine Avg] IP SLA G711a [10.0.3.252->62.61.7.2] The Number of Round Trip Operations(60)(SLA-ON-SERVER3)
 ◆ [BaseLine Percnt75 (>=)] IP SLA G711a [10.0.3.252->62.61.7.2] The Number of Round Trip Operations(60)(SLA-ON-SERVER3)
 ◆ [BaseLine Percnt90 (>=)] IP SLA G711a [10.0.3.252->62.61.7.2] The Number of Round Trip Operations(60)(SLA-ON-SERVER3)