

23.07.2008 19:10 - 28.07.2008 19:10

PROLAN

	■	■	■	■	■	
ower general test [10.0.3.152] UPS Device SNMP Availability (%)	n/a	n/a	n/a	n/a	n/a	7178
ower general test [10.0.3.152] Powerware 9125(O): Input Frequency (Hz)	n/a	n/a	n/a	n/a	n/a	7178
ower general test [10.0.3.152] Powerware 9125(O): Input Voltage (VAC)	n/a	n/a	n/a	n/a	n/a	7178
ower general test [10.0.3.152] Powerware 9125(O): Input Current (Amps)	n/a	n/a	n/a	n/a	n/a	7178
ower general test [10.0.3.152] Powerware 9125: Output Frequency (Hz)	n/a	n/a	n/a	n/a	n/a	7178
ower general test [10.0.3.152] Powerware 9125(O): Output Voltage (VAC)	n/a	n/a	n/a	n/a	n/a	7178
	99%	→	100%	→	100%	7178

(2)

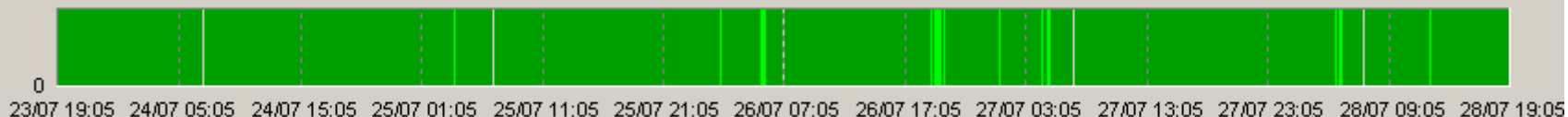
ProLAN

ProLAN.

PROLAN,

PROLAN
PARTNER@PROLAN.RU

« »

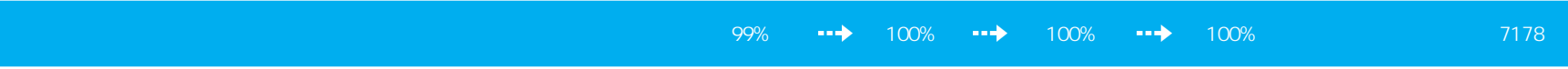


23.07.2008 19:10 - 28.07.2008 19:10

PROLAN



ower general test [10.0.3.152] Powerware 9125(O): Output Current (Amps)	n/a	n/a	n/a	n/a	n/a	7178
ower general test [10.0.3.152] Powerware 9125(O): Output Power (W)	n/a	n/a	n/a	n/a	n/a	7178
ower general test [10.0.3.152] Powerware 9125(O): Output Percent Load (%)	n/a	n/a	n/a	n/a	n/a	7178
ower general test [10.0.3.152] Powerware 9125: UPS Battery Run Time (min)	n/a	n/a	n/a	n/a	n/a	7178



(2)

ProLAN

ProLAN.

PROLAN,

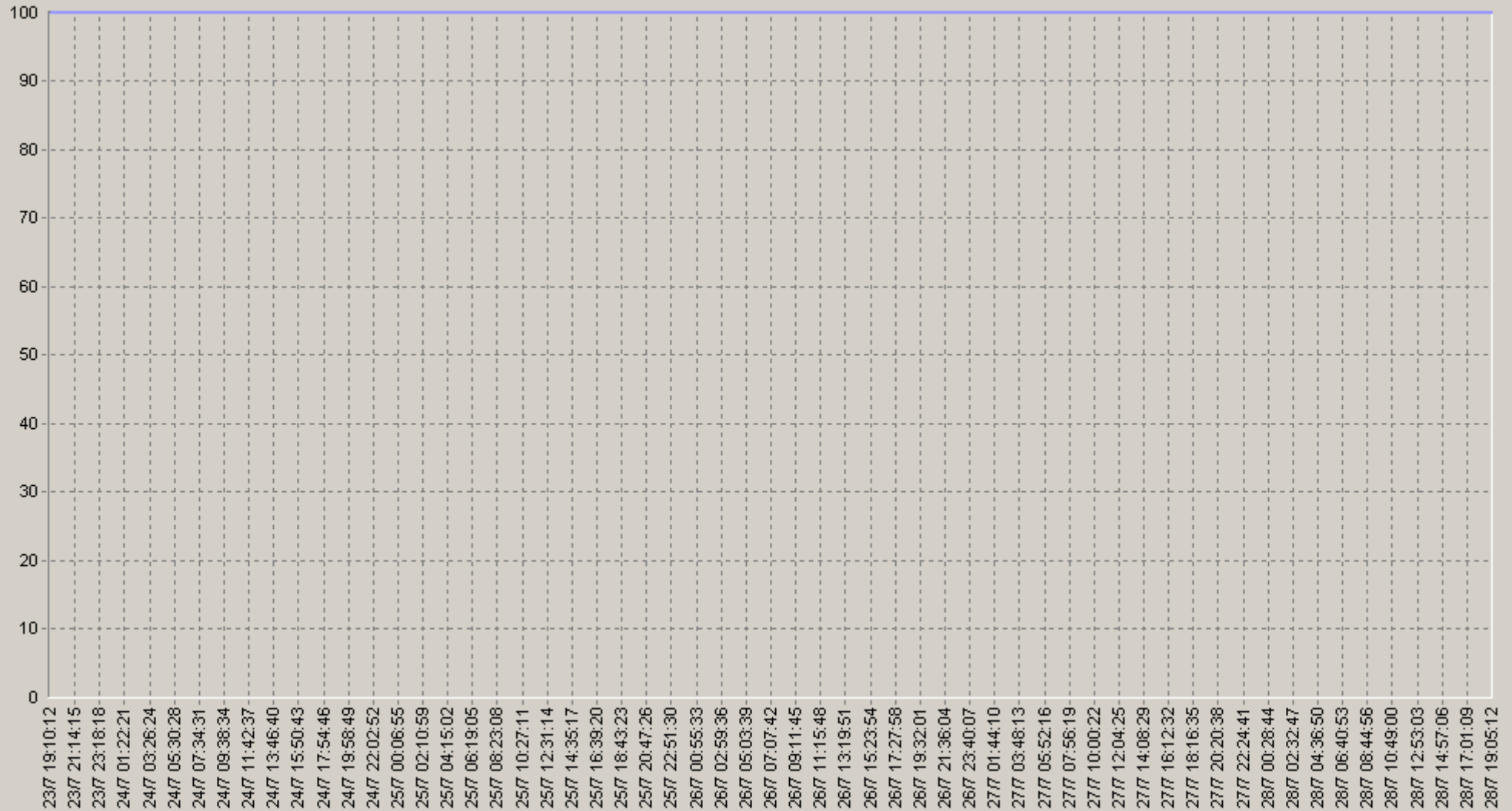
PROLAN
PARTNER@PROLAN.RU

« »



23.07.2008 19:10 - 28.07.2008 19:10

ower general test [10.0.3.152] UPS Device SNMP Availability (%)



— Power general test.[10.0.3.152] UPS Device SNMP Availability (%)(SLA-ON-SERVER1)

23.07.2008 19:10 - 28.07.2008 19:10

20. over general test [10.0.3.152] UPS Device SNMP Availability (%)

		75>	90>			75>	90>
00:00-00:20	100 n/a	100 n/a	100 n/a	06:00-06:20	100 n/a	100 n/a	100 n/a
00:20-00:40	100 n/a	100 n/a	100 n/a	06:20-06:40	100 n/a	100 n/a	100 n/a
00:40-01:00	100 n/a	100 n/a	100 n/a	06:40-07:00	100 n/a	100 n/a	100 n/a
01:00-01:20	100 n/a	100 n/a	100 n/a	07:00-07:20	100 n/a	100 n/a	100 n/a
01:20-01:40	100 n/a	100 n/a	100 n/a	07:20-07:40	100 n/a	100 n/a	100 n/a
01:40-02:00	100 n/a	100 n/a	100 n/a	07:40-08:00	100 n/a	100 n/a	100 n/a
02:00-02:20	100 n/a	100 n/a	100 n/a	08:00-08:20	100 n/a	100 n/a	100 n/a
02:20-02:40	100 n/a	100 n/a	100 n/a	08:20-08:40	100 n/a	100 n/a	100 n/a
02:40-03:00	100 n/a	100 n/a	100 n/a	08:40-09:00	100 n/a	100 n/a	100 n/a
03:00-03:20	100 n/a	100 n/a	100 n/a	09:00-09:20	100 n/a	100 n/a	100 n/a
03:20-03:40	100 n/a	100 n/a	100 n/a	09:20-09:40	100 n/a	100 n/a	100 n/a
03:40-04:00	100 n/a	100 n/a	100 n/a	09:40-10:00	100 n/a	100 n/a	100 n/a
04:00-04:20	100 n/a	100 n/a	100 n/a	10:00-10:20	100 n/a	100 n/a	100 n/a
04:20-04:40	100 n/a	100 n/a	100 n/a	10:20-10:40	100 n/a	100 n/a	100 n/a
04:40-05:00	100 n/a	100 n/a	100 n/a	10:40-11:00	100 n/a	100 n/a	100 n/a
05:00-05:20	100 n/a	100 n/a	100 n/a	11:00-11:20	100 n/a	100 n/a	100 n/a
05:20-05:40	100 n/a	100 n/a	100 n/a	11:20-11:40	100 n/a	100 n/a	100 n/a
05:40-06:00	100 n/a	100 n/a	100 n/a	11:40-12:00	100 n/a	100 n/a	100 n/a

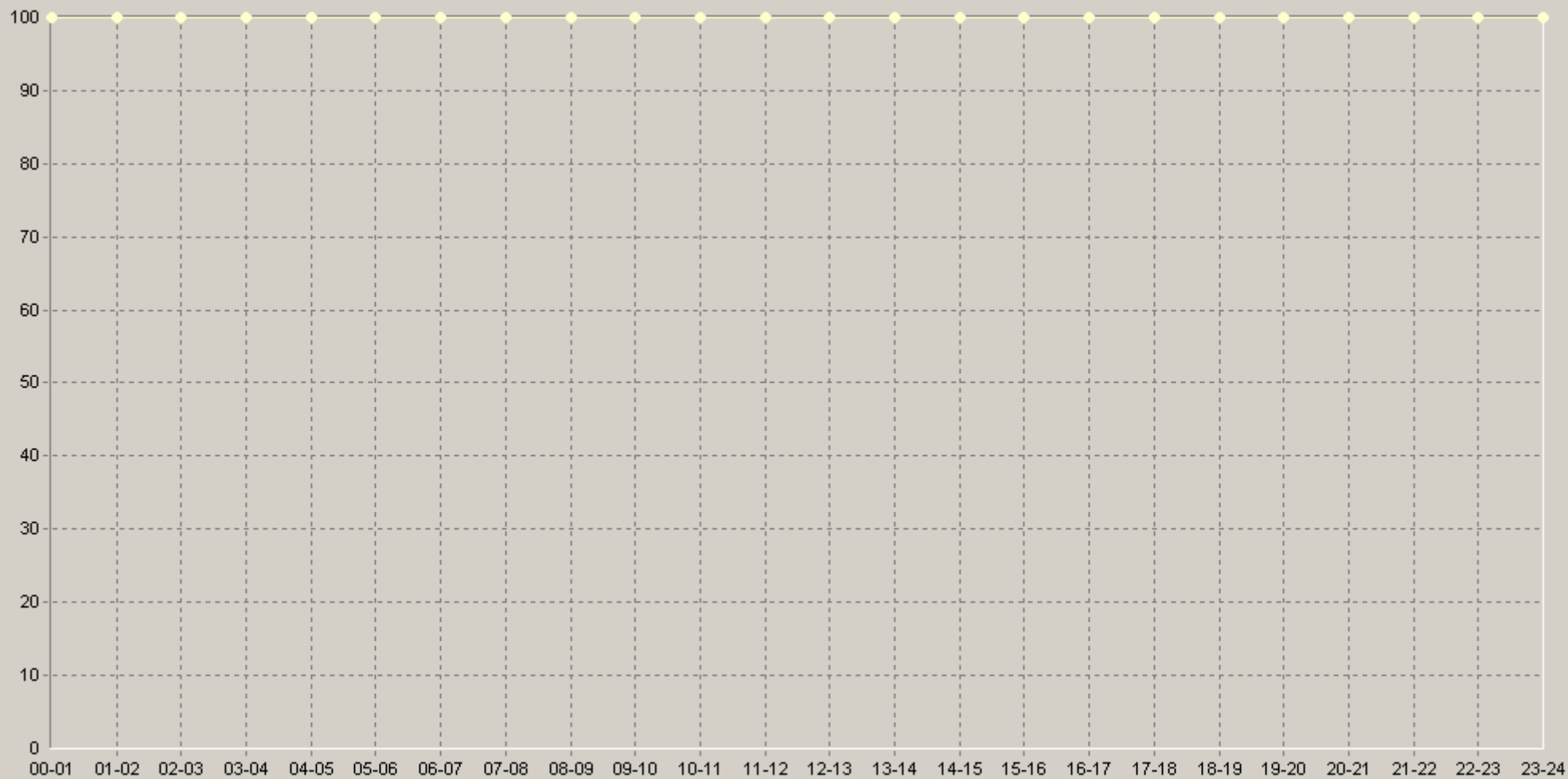
23.07.2008 19:10 - 28.07.2008 19:10

20. over general test [10.0.3.152] UPS Device SNMP Availability (%)

		75>	90>			75>	90>
12:00-12:20	100 n/a	100 n/a	100 n/a	18:00-18:20	100 n/a	100 n/a	100 n/a
12:20-12:40	100 n/a	100 n/a	100 n/a	18:20-18:40	100 n/a	100 n/a	100 n/a
12:40-13:00	100 n/a	100 n/a	100 n/a	18:40-19:00	100 n/a	100 n/a	100 n/a
13:00-13:20	100 n/a	100 n/a	100 n/a	19:00-19:20	100 n/a	100 n/a	100 n/a
13:20-13:40	100 n/a	100 n/a	100 n/a	19:20-19:40	100 n/a	100 n/a	100 n/a
13:40-14:00	100 n/a	100 n/a	100 n/a	19:40-20:00	100 n/a	100 n/a	100 n/a
14:00-14:20	100 n/a	100 n/a	100 n/a	20:00-20:20	100 n/a	100 n/a	100 n/a
14:20-14:40	100 n/a	100 n/a	100 n/a	20:20-20:40	100 n/a	100 n/a	100 n/a
14:40-15:00	100 n/a	100 n/a	100 n/a	20:40-21:00	100 n/a	100 n/a	100 n/a
15:00-15:20	100 n/a	100 n/a	100 n/a	21:00-21:20	100 n/a	100 n/a	100 n/a
15:20-15:40	100 n/a	100 n/a	100 n/a	21:20-21:40	100 n/a	100 n/a	100 n/a
15:40-16:00	100 n/a	100 n/a	100 n/a	21:40-22:00	100 n/a	100 n/a	100 n/a
16:00-16:20	100 n/a	100 n/a	100 n/a	22:00-22:20	100 n/a	100 n/a	100 n/a
16:20-16:40	100 n/a	100 n/a	100 n/a	22:20-22:40	100 n/a	100 n/a	100 n/a
16:40-17:00	100 n/a	100 n/a	100 n/a	22:40-23:00	100 n/a	100 n/a	100 n/a
17:00-17:20	100 n/a	100 n/a	100 n/a	23:00-23:20	100 n/a	100 n/a	100 n/a
17:20-17:40	100 n/a	100 n/a	100 n/a	23:20-23:40	100 n/a	100 n/a	100 n/a
17:40-18:00	100 n/a	100 n/a	100 n/a	23:40-00:00	100 n/a	100 n/a	100 n/a

23.07.2008 19:10 - 28.07.2008 19:10

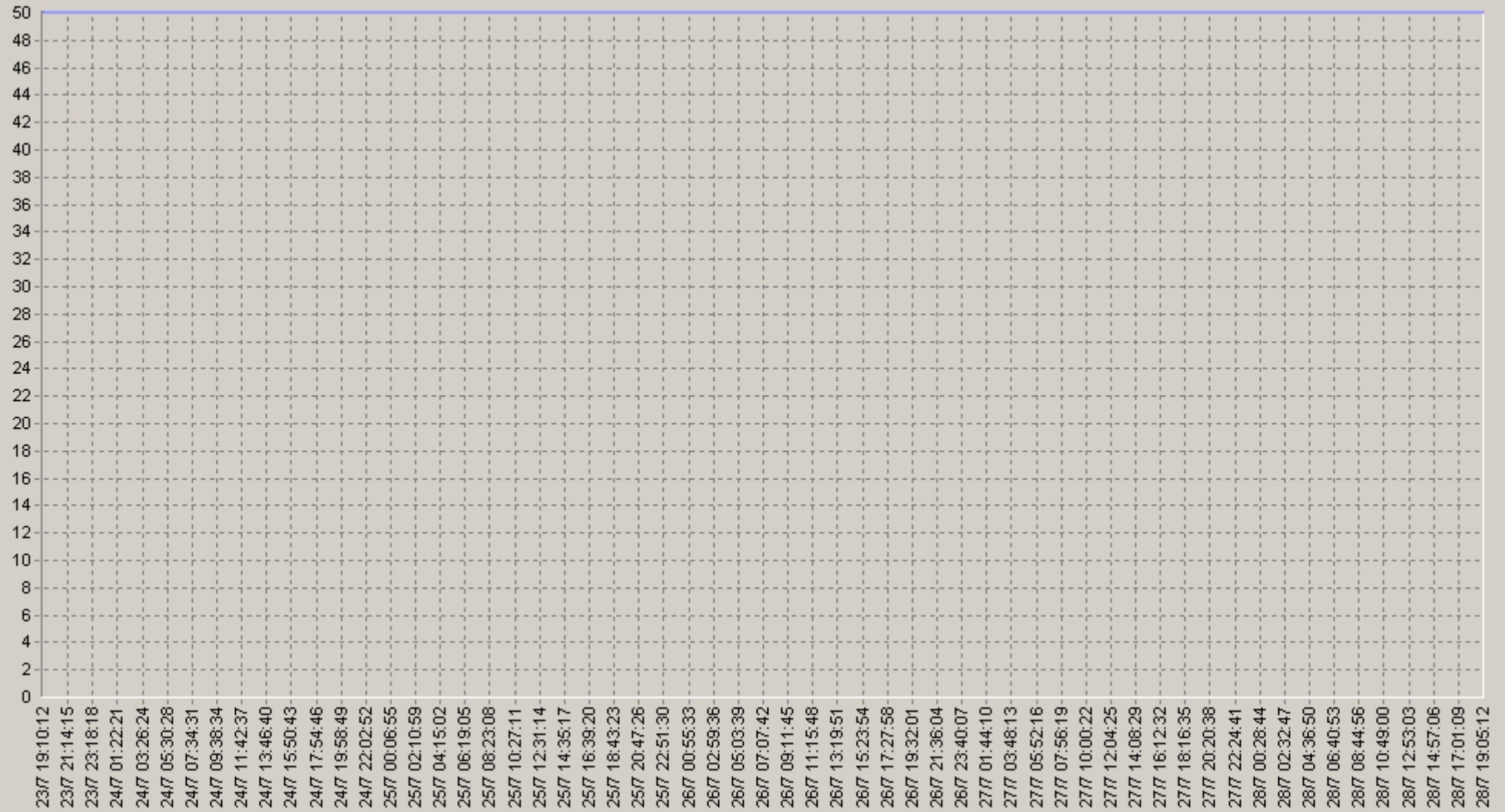
60. Power general test.[10.0.3.152] UPS Device SNMP Availability (%)



- [BaseLine Avg] Power general test.[10.0.3.152] UPS Device SNMP Availability (%) (60)(SLA-ON-SERVER1)
- [BaseLine Percnt75 (>)] Power general test.[10.0.3.152] UPS Device SNMP Availability (%) (60)(SLA-ON-SERVER1)
- [BaseLine Percnt90 (>)] Power general test.[10.0.3.152] UPS Device SNMP Availability (%) (60)(SLA-ON-SERVER1)

23.07.2008 19:10 - 28.07.2008 19:10

over general test.[10.0.3.152] Powerware 9125(0): Input Frequency (Hz)



— Power general test.[10.0.3.152] Powerware 9125(0): Input Frequency (Hz)(SLA-ON-SERVER1)

23.07.2008 19:10 - 28.07.2008 19:10

20 over general test [10.0.3.152] Powerware 9125(0): Input Frequency (Hz)

		75<		90<				75<		90<	
00:00-00:20	50 n/a	50 n/a	50 n/a	50 n/a	50 n/a	06:00-06:20	50 n/a	50 n/a	50 n/a	50 n/a	50 n/a
00:20-00:40	50 n/a	50 n/a	50 n/a	50 n/a	50 n/a	06:20-06:40	50 n/a	50 n/a	50 n/a	50 n/a	50 n/a
00:40-01:00	50 n/a	50 n/a	50 n/a	50 n/a	50 n/a	06:40-07:00	50 n/a	50 n/a	50 n/a	50 n/a	50 n/a
01:00-01:20	50 n/a	50 n/a	50 n/a	50 n/a	50 n/a	07:00-07:20	50 n/a	50 n/a	50 n/a	50 n/a	50 n/a
01:20-01:40	50 n/a	50 n/a	50 n/a	50 n/a	50 n/a	07:20-07:40	50 n/a	50 n/a	50 n/a	50 n/a	50 n/a
01:40-02:00	50 n/a	50 n/a	50 n/a	50 n/a	50 n/a	07:40-08:00	50 n/a	50 n/a	50 n/a	50 n/a	50 n/a
02:00-02:20	50 n/a	50 n/a	50 n/a	50 n/a	50 n/a	08:00-08:20	50 n/a	50 n/a	50 n/a	50 n/a	50 n/a
02:20-02:40	50 n/a	50 n/a	50 n/a	50 n/a	50 n/a	08:20-08:40	50 n/a	50 n/a	50 n/a	50 n/a	50 n/a
02:40-03:00	50 n/a	50 n/a	50 n/a	50 n/a	50 n/a	08:40-09:00	50 n/a	50 n/a	50 n/a	50 n/a	50 n/a
03:00-03:20	50 n/a	50 n/a	50 n/a	50 n/a	50 n/a	09:00-09:20	50 n/a	50 n/a	50 n/a	50 n/a	50 n/a
03:20-03:40	50 n/a	50 n/a	50 n/a	50 n/a	50 n/a	09:20-09:40	50 n/a	50 n/a	50 n/a	50 n/a	50 n/a
03:40-04:00	50 n/a	50 n/a	50 n/a	50 n/a	50 n/a	09:40-10:00	50 n/a	50 n/a	50 n/a	50 n/a	50 n/a
04:00-04:20	50 n/a	50 n/a	50 n/a	50 n/a	50 n/a	10:00-10:20	50 n/a	50 n/a	50 n/a	50 n/a	50 n/a
04:20-04:40	50 n/a	50 n/a	50 n/a	50 n/a	50 n/a	10:20-10:40	50 n/a	50 n/a	50 n/a	50 n/a	50 n/a
04:40-05:00	50 n/a	50 n/a	50 n/a	50 n/a	50 n/a	10:40-11:00	50 n/a	50 n/a	50 n/a	50 n/a	50 n/a
05:00-05:20	50 n/a	50 n/a	50 n/a	50 n/a	50 n/a	11:00-11:20	50 n/a	50 n/a	50 n/a	50 n/a	50 n/a
05:20-05:40	50 n/a	50 n/a	50 n/a	50 n/a	50 n/a	11:20-11:40	50 n/a	50 n/a	50 n/a	50 n/a	50 n/a
05:40-06:00	50 n/a	50 n/a	50 n/a	50 n/a	50 n/a	11:40-12:00	50 n/a	50 n/a	50 n/a	50 n/a	50 n/a

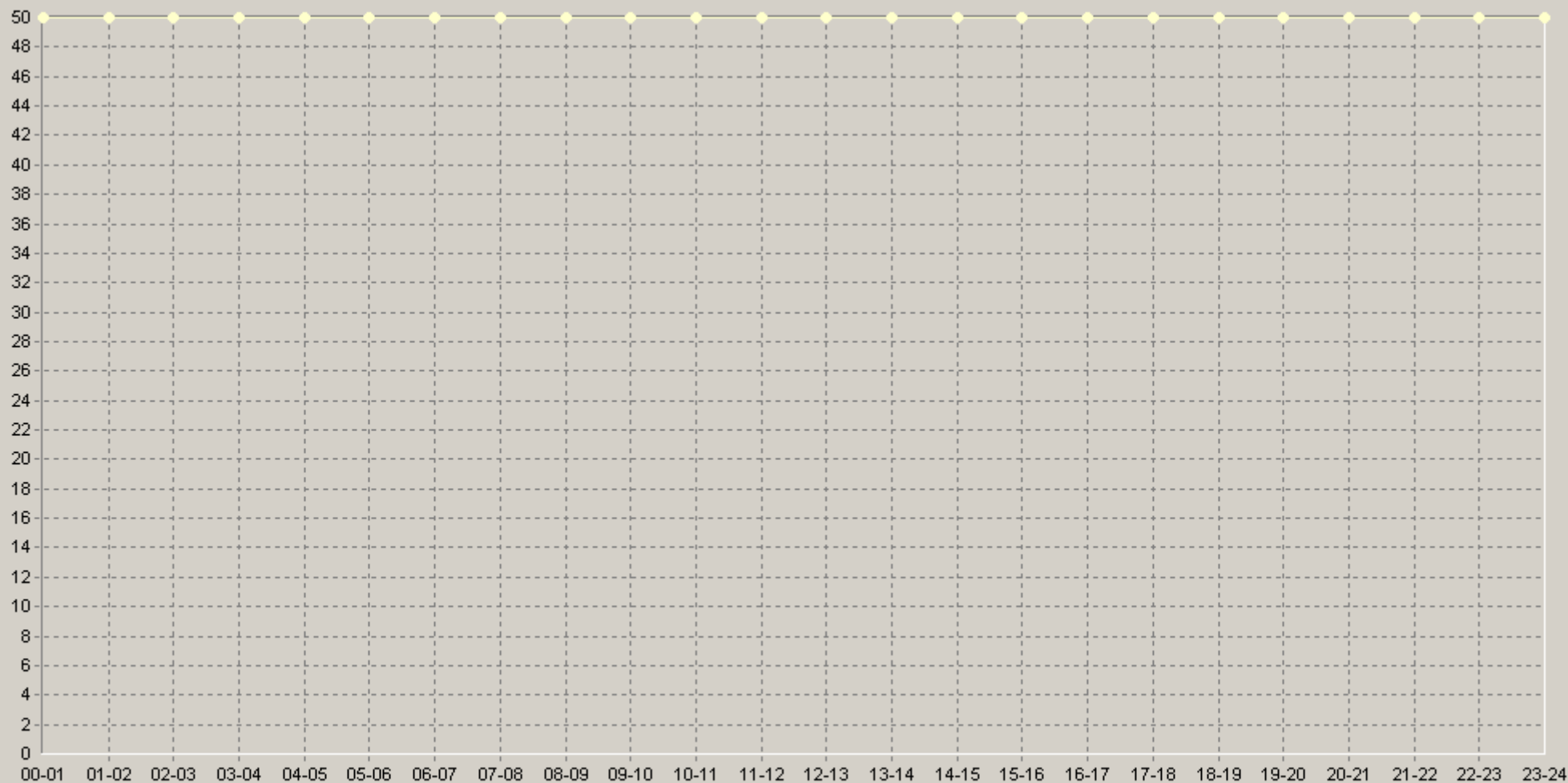
23.07.2008 19:10 - 28.07.2008 19:10

20 over general test [10.0.3.152] Powerware 9125(O): Input Frequency (Hz)

		75<		90<				75<		90<	
12:00-12:20	50 n/a	50 n/a	50 n/a	50 n/a	50 n/a	18:00-18:20	50 n/a	50 n/a	50 n/a	50 n/a	50 n/a
12:20-12:40	50 n/a	50 n/a	50 n/a	50 n/a	50 n/a	18:20-18:40	50 n/a	50 n/a	50 n/a	50 n/a	50 n/a
12:40-13:00	50 n/a	50 n/a	50 n/a	50 n/a	50 n/a	18:40-19:00	50 n/a	50 n/a	50 n/a	50 n/a	50 n/a
13:00-13:20	50 n/a	50 n/a	50 n/a	50 n/a	50 n/a	19:00-19:20	50 n/a	50 n/a	50 n/a	50 n/a	50 n/a
13:20-13:40	50 n/a	50 n/a	50 n/a	50 n/a	50 n/a	19:20-19:40	50 n/a	50 n/a	50 n/a	50 n/a	50 n/a
13:40-14:00	50 n/a	50 n/a	50 n/a	50 n/a	50 n/a	19:40-20:00	50 n/a	50 n/a	50 n/a	50 n/a	50 n/a
14:00-14:20	50 n/a	50 n/a	50 n/a	50 n/a	50 n/a	20:00-20:20	50 n/a	50 n/a	50 n/a	50 n/a	50 n/a
14:20-14:40	50 n/a	50 n/a	50 n/a	50 n/a	50 n/a	20:20-20:40	50 n/a	50 n/a	50 n/a	50 n/a	50 n/a
14:40-15:00	50 n/a	50 n/a	50 n/a	50 n/a	50 n/a	20:40-21:00	50 n/a	50 n/a	50 n/a	50 n/a	50 n/a
15:00-15:20	50 n/a	50 n/a	50 n/a	50 n/a	50 n/a	21:00-21:20	50 n/a	50 n/a	50 n/a	50 n/a	50 n/a
15:20-15:40	50 n/a	50 n/a	50 n/a	50 n/a	50 n/a	21:20-21:40	50 n/a	50 n/a	50 n/a	50 n/a	50 n/a
15:40-16:00	50 n/a	50 n/a	50 n/a	50 n/a	50 n/a	21:40-22:00	50 n/a	50 n/a	50 n/a	50 n/a	50 n/a
16:00-16:20	50 n/a	50 n/a	50 n/a	50 n/a	50 n/a	22:00-22:20	50 n/a	50 n/a	50 n/a	50 n/a	50 n/a
16:20-16:40	50 n/a	50 n/a	50 n/a	50 n/a	50 n/a	22:20-22:40	50 n/a	50 n/a	50 n/a	50 n/a	50 n/a
16:40-17:00	50 n/a	50 n/a	50 n/a	50 n/a	50 n/a	22:40-23:00	50 n/a	50 n/a	50 n/a	50 n/a	50 n/a
17:00-17:20	50 n/a	50 n/a	50 n/a	50 n/a	50 n/a	23:00-23:20	50 n/a	50 n/a	50 n/a	50 n/a	50 n/a
17:20-17:40	50 n/a	50 n/a	50 n/a	50 n/a	50 n/a	23:20-23:40	50 n/a	50 n/a	50 n/a	50 n/a	50 n/a
17:40-18:00	50 n/a	50 n/a	50 n/a	50 n/a	50 n/a	23:40-00:00	50 n/a	50 n/a	50 n/a	50 n/a	50 n/a

23.07.2008 19:10 - 28.07.2008 19:10

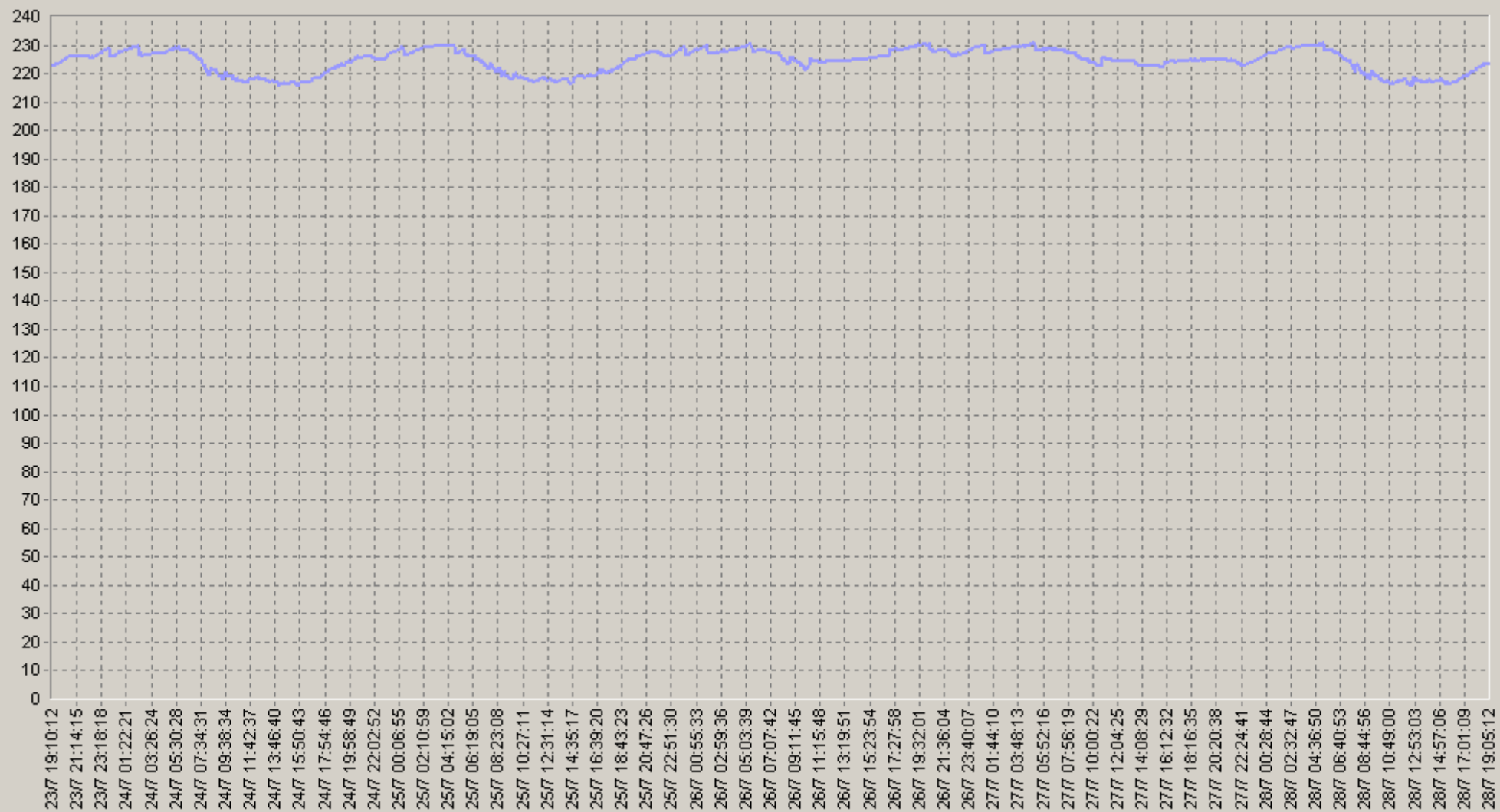
60 over general test [10.0.3.152] Powerware 9125(0): Input Frequency (Hz)



- ◆ [BaseLine Avg] Power general test.[10.0.3.152] Powerware 9125(0): Input Frequency (Hz)(60)(SLA-ON-SERVER1)
- ◆ [BaseLine Percnt75 (<)] Power general test.[10.0.3.152] Powerware 9125(0): Input Frequency (Hz)(60)(SLA-ON-SERVER1)
- ◆ [BaseLine Percnt90 (<)] Power general test.[10.0.3.152] Powerware 9125(0): Input Frequency (Hz)(60)(SLA-ON-SERVER1)

23.07.2008 19:10 - 28.07.2008 19:10

ower general test.[10.0.3.152] Powerware 9125(0): Input Voltage (VAC)



— Power general test.[10.0.3.152] Powerware 9125(0): Input Voltage (VAC)(SLA-ON-SERVER1)

23.07.2008 19:10 - 28.07.2008 19:10

20 over general test [10.0.3.152] Powerware 9125(O): Input Voltage (VAC)

		75>	90>			75>	90>
00:00-00:20	227 n/a	226 n/a	226 n/a	06:00-06:20	228 n/a	228 n/a	226 n/a
00:20-00:40	228 n/a	227 n/a	226 n/a	06:20-06:40	228 n/a	227 n/a	226 n/a
00:40-01:00	228 n/a	227 n/a	227 n/a	06:40-07:00	227 n/a	226 n/a	225 n/a
01:00-01:20	228 n/a	227 n/a	227 n/a	07:00-07:20	226 n/a	225 n/a	224 n/a
01:20-01:40	228 n/a	228 n/a	227 n/a	07:20-07:40	225 n/a	224 n/a	223 n/a
01:40-02:00	229 n/a	228 n/a	228 n/a	07:40-08:00	225 n/a	223 n/a	222 n/a
02:00-02:20	229 n/a	228 n/a	227 n/a	08:00-08:20	223 n/a	221 n/a	220 n/a
02:20-02:40	228 n/a	227 n/a	227 n/a	08:20-08:40	223 n/a	221 n/a	220 n/a
02:40-03:00	228 n/a	227 n/a	227 n/a	08:40-09:00	222 n/a	220 n/a	219 n/a
03:00-03:20	229 n/a	228 n/a	227 n/a	09:00-09:20	221 n/a	219 n/a	218 n/a
03:20-03:40	229 n/a	228 n/a	227 n/a	09:20-09:40	221 n/a	219 n/a	218 n/a
03:40-04:00	229 n/a	228 n/a	227 n/a	09:40-10:00	221 n/a	219 n/a	219 n/a
04:00-04:20	229 n/a	228 n/a	227 n/a	10:00-10:20	220 n/a	218 n/a	218 n/a
04:20-04:40	229 n/a	229 n/a	227 n/a	10:20-10:40	220 n/a	218 n/a	217 n/a
04:40-05:00	229 n/a	228 n/a	227 n/a	10:40-11:00	220 n/a	217 n/a	217 n/a
05:00-05:20	229 n/a	228 n/a	228 n/a	11:00-11:20	220 n/a	217 n/a	217 n/a
05:20-05:40	229 n/a	228 n/a	228 n/a	11:20-11:40	220 n/a	217 n/a	217 n/a
05:40-06:00	228 n/a	228 n/a	226 n/a	11:40-12:00	221 n/a	218 n/a	217 n/a

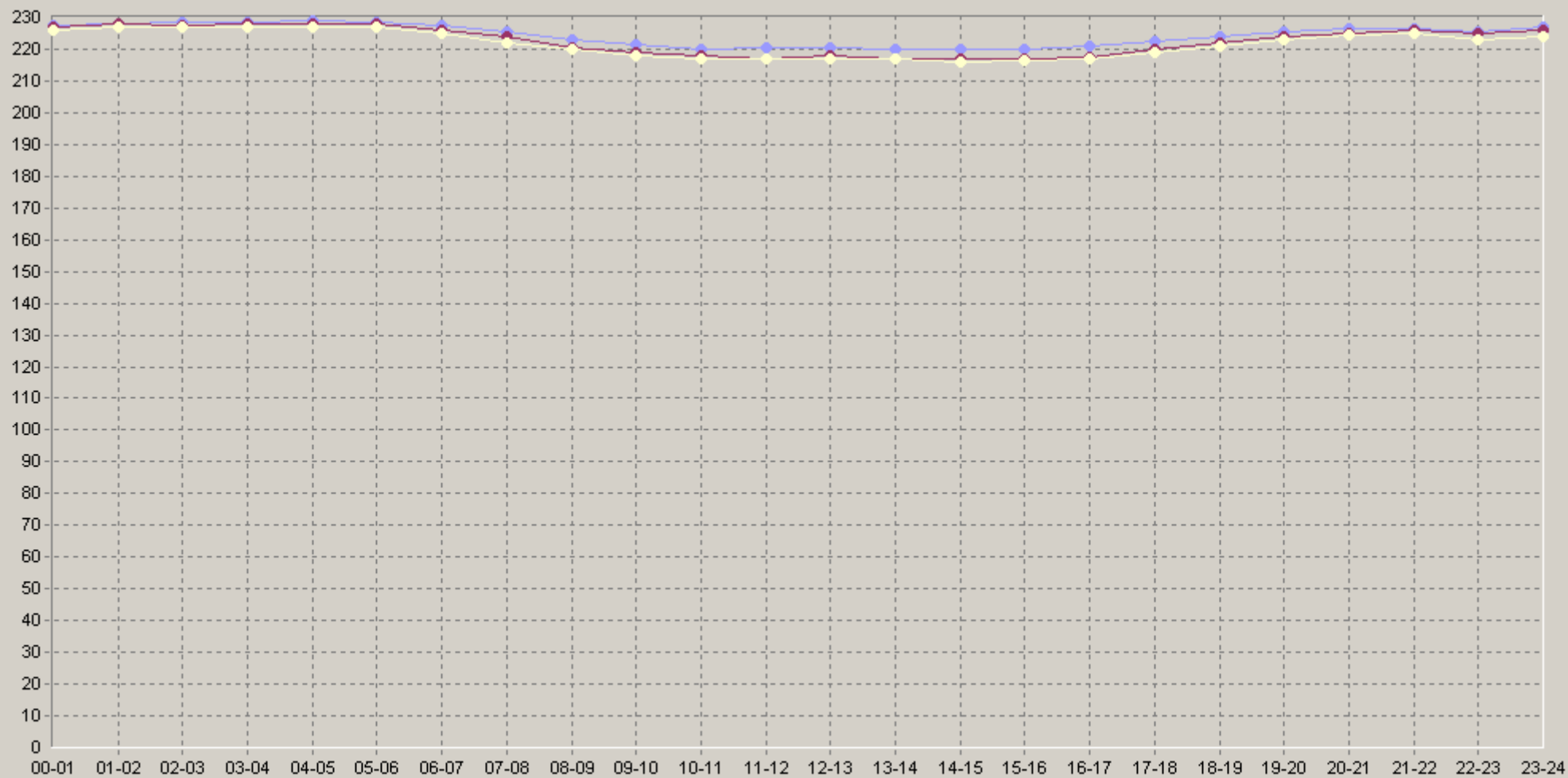
23.07.2008 19:10 - 28.07.2008 19:10

20 over general test [10.0.3.152] Powerware 9125(O): Input Voltage (VAC)

		75>	90>			75>	90>
12:00-12:20	221 n/a	218 n/a	218 n/a	18:00-18:20	224 n/a	222 n/a	221 n/a
12:20-12:40	220 n/a	218 n/a	216 n/a	18:20-18:40	224 n/a	222 n/a	222 n/a
12:40-13:00	221 n/a	218 n/a	218 n/a	18:40-19:00	225 n/a	223 n/a	222 n/a
13:00-13:20	220 n/a	217 n/a	217 n/a	19:00-19:20	225 n/a	223 n/a	223 n/a
13:20-13:40	220 n/a	217 n/a	217 n/a	19:20-19:40	225 n/a	223 n/a	223 n/a
13:40-14:00	220 n/a	217 n/a	217 n/a	19:40-20:00	226 n/a	224 n/a	224 n/a
14:00-14:20	220 n/a	217 n/a	216 n/a	20:00-20:20	226 n/a	225 n/a	224 n/a
14:20-14:40	220 n/a	217 n/a	216 n/a	20:20-20:40	226 n/a	225 n/a	225 n/a
14:40-15:00	220 n/a	217 n/a	216 n/a	20:40-21:00	226 n/a	225 n/a	225 n/a
15:00-15:20	220 n/a	217 n/a	217 n/a	21:00-21:20	227 n/a	226 n/a	225 n/a
15:20-15:40	220 n/a	217 n/a	216 n/a	21:20-21:40	227 n/a	226 n/a	225 n/a
15:40-16:00	220 n/a	217 n/a	216 n/a	21:40-22:00	226 n/a	226 n/a	225 n/a
16:00-16:20	221 n/a	217 n/a	217 n/a	22:00-22:20	226 n/a	225 n/a	224 n/a
16:20-16:40	221 n/a	218 n/a	217 n/a	22:20-22:40	225 n/a	225 n/a	223 n/a
16:40-17:00	221 n/a	218 n/a	217 n/a	22:40-23:00	226 n/a	225 n/a	223 n/a
17:00-17:20	222 n/a	219 n/a	219 n/a	23:00-23:20	226 n/a	226 n/a	224 n/a
17:20-17:40	222 n/a	220 n/a	219 n/a	23:20-23:40	227 n/a	227 n/a	225 n/a
17:40-18:00	223 n/a	221 n/a	220 n/a	23:40-00:00	228 n/a	228 n/a	225 n/a

23.07.2008 19:10 - 28.07.2008 19:10

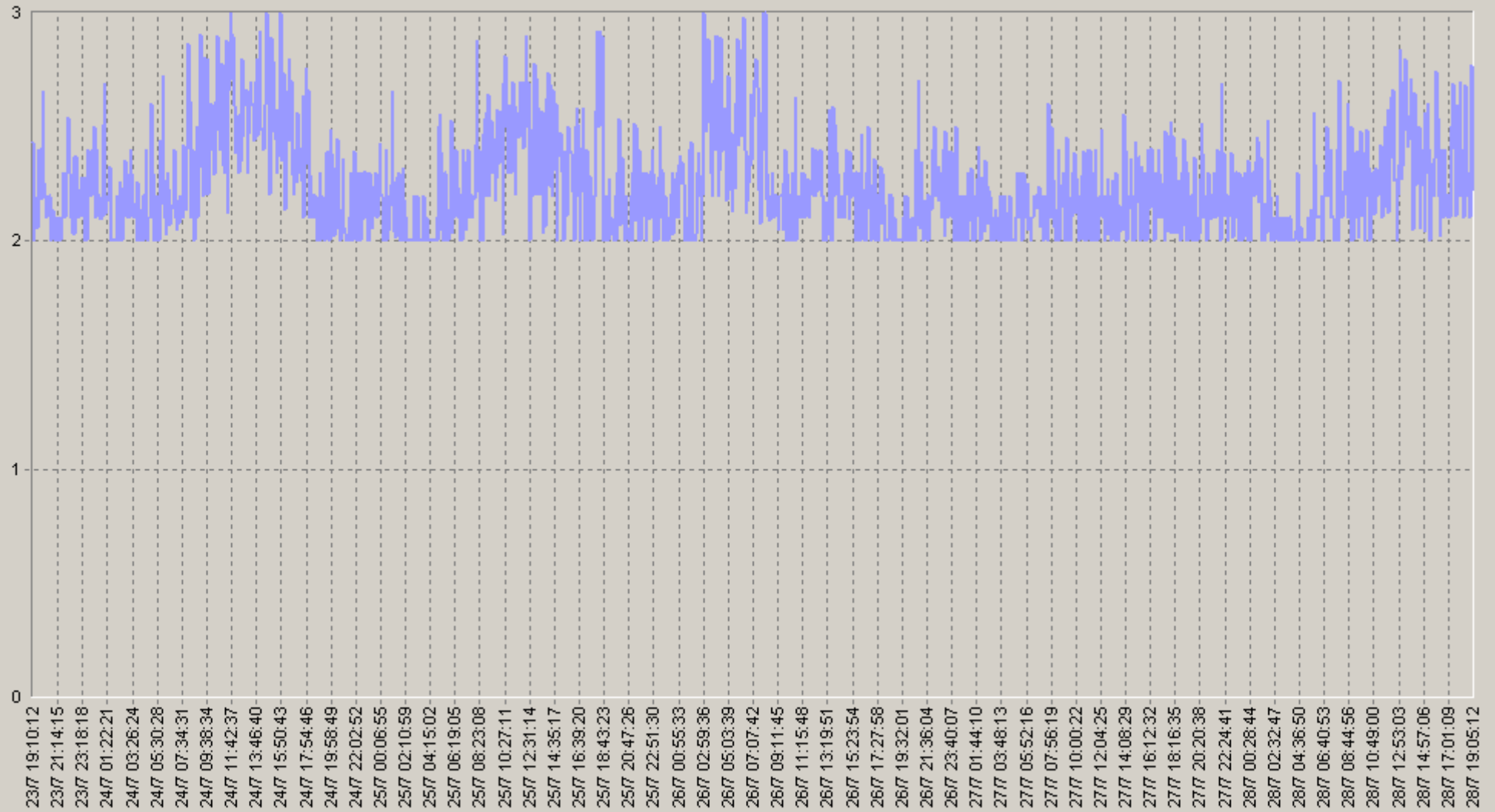
60 over general test [10.0.3.152] Powerware 9125(O): Input Voltage (VAC)



- ◆ [BaseLine Avg] Power general test.[10.0.3.152] Powerware 9125(O): Input Voltage (VAC)(60)(SLA-ON-SERVER1)
- ◆ [BaseLine Percnt75 (>)] Power general test.[10.0.3.152] Powerware 9125(O): Input Voltage (VAC)(60)(SLA-ON-SERVER1)
- ◆ [BaseLine Percnt90 (>)] Power general test.[10.0.3.152] Powerware 9125(O): Input Voltage (VAC)(60)(SLA-ON-SERVER1)

23.07.2008 19:10 - 28.07.2008 19:10

over general test.[10.0.3.152] Powerware 9125(0): Input Current (Amps)



— Power general test.[10.0.3.152] Powerware 9125(0): Input Current (Amps)(SLA-ON-SERVER1)

23.07.2008 19:10 - 28.07.2008 19:10

20 over general test [10.0.3.152] Powerware 9125(0): Input Current (Amps)

		75>	90>			75>	90>
00:00-00:20	2,21 n/a	2 n/a	2 n/a	06:00-06:20	2,26 n/a	2 n/a	2 n/a
00:20-00:40	2,16 n/a	2 n/a	2 n/a	06:20-06:40	2,24 n/a	2 n/a	2 n/a
00:40-01:00	2,14 n/a	2 n/a	2 n/a	06:40-07:00	2,21 n/a	2 n/a	2 n/a
01:00-01:20	2,33 n/a	2 n/a	2 n/a	07:00-07:20	2,26 n/a	2 n/a	2 n/a
01:20-01:40	2,14 n/a	2 n/a	2 n/a	07:20-07:40	2,23 n/a	2 n/a	2 n/a
01:40-02:00	2,12 n/a	2 n/a	2 n/a	07:40-08:00	2,24 n/a	2 n/a	2 n/a
02:00-02:20	2,15 n/a	2 n/a	2 n/a	08:00-08:20	2,45 n/a	2 n/a	2 n/a
02:20-02:40	2,13 n/a	2 n/a	2 n/a	08:20-08:40	2,18 n/a	2 n/a	2 n/a
02:40-03:00	2,14 n/a	2 n/a	2 n/a	08:40-09:00	2,24 n/a	2 n/a	2 n/a
03:00-03:20	2,19 n/a	2 n/a	2 n/a	09:00-09:20	2,36 n/a	2 n/a	2 n/a
03:20-03:40	2,19 n/a	2 n/a	2 n/a	09:20-09:40	2,27 n/a	2 n/a	2 n/a
03:40-04:00	2,16 n/a	2 n/a	2 n/a	09:40-10:00	2,31 n/a	2 n/a	2 n/a
04:00-04:20	2,14 n/a	2 n/a	2 n/a	10:00-10:20	2,33 n/a	2 n/a	2 n/a
04:20-04:40	2,2 n/a	2 n/a	2 n/a	10:20-10:40	2,36 n/a	2 n/a	2 n/a
04:40-05:00	2,11 n/a	2 n/a	2 n/a	10:40-11:00	2,3 n/a	2 n/a	2 n/a
05:00-05:20	2,23 n/a	2 n/a	2 n/a	11:00-11:20	2,34 n/a	2 n/a	2 n/a
05:20-05:40	2,16 n/a	2 n/a	2 n/a	11:20-11:40	2,33 n/a	2 n/a	2 n/a
05:40-06:00	2,28 n/a	2 n/a	2 n/a	11:40-12:00	2,4 n/a	2 n/a	2 n/a

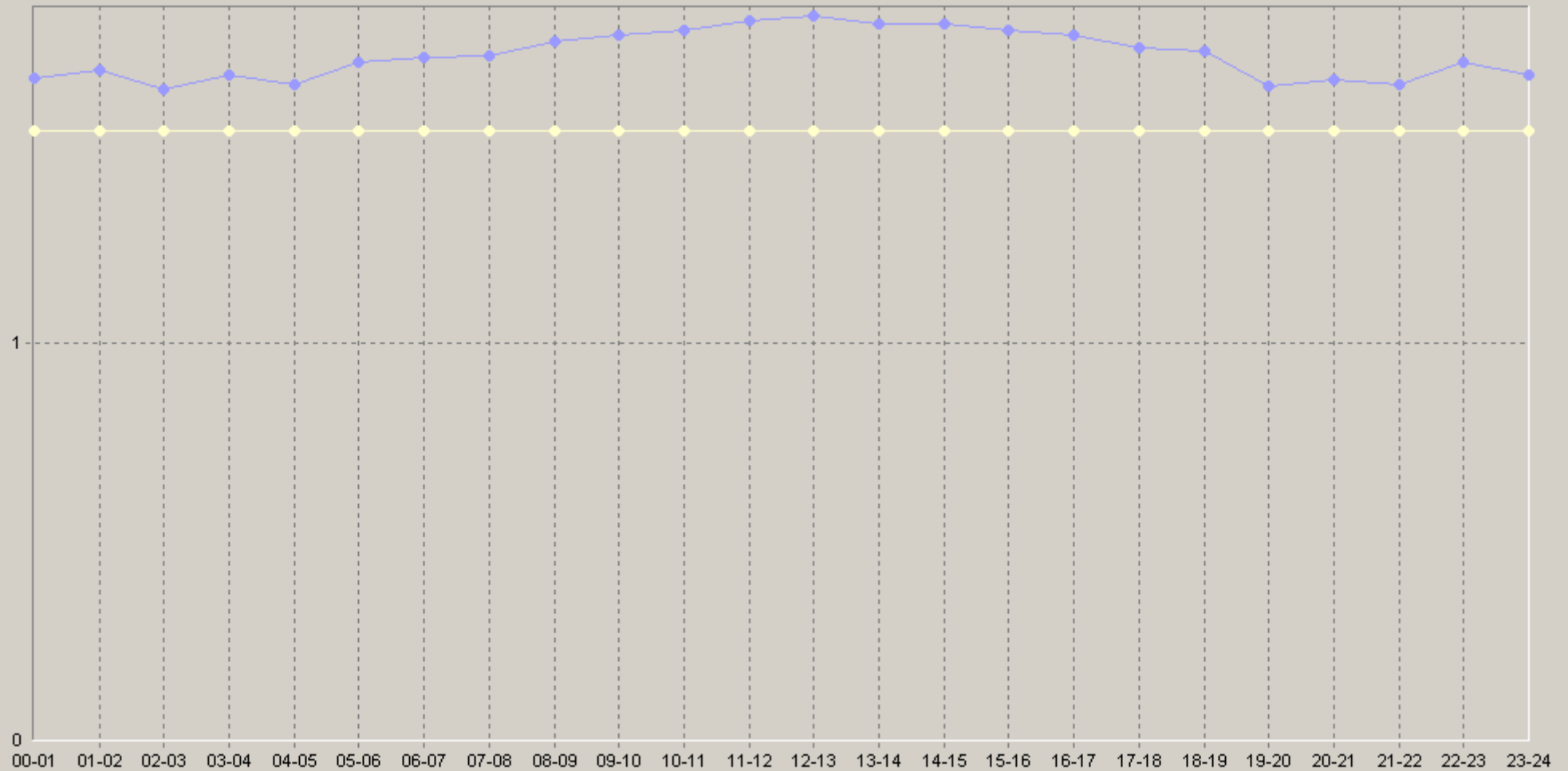
23.07.2008 19:10 - 28.07.2008 19:10

20 over general test [10.0.3.152] Powerware 9125(O): Input Current (Amps)

		75>	90>			75>	90>
12:00-12:20	2,45 n/a	2 n/a	2 n/a	18:00-18:20	2,35 n/a	2 n/a	2 n/a
12:20-12:40	2,33 n/a	2 n/a	2 n/a	18:20-18:40	2,3 n/a	2 n/a	2 n/a
12:40-13:00	2,35 n/a	2 n/a	2 n/a	18:40-19:00	2,13 n/a	2 n/a	2 n/a
13:00-13:20	2,34 n/a	2 n/a	2 n/a	19:00-19:20	2,17 n/a	2 n/a	2 n/a
13:20-13:40	2,38 n/a	2 n/a	2 n/a	19:20-19:40	2,07 n/a	2 n/a	2 n/a
13:40-14:00	2,32 n/a	2 n/a	2 n/a	19:40-20:00	2,19 n/a	2 n/a	2 n/a
14:00-14:20	2,44 n/a	2 n/a	2 n/a	20:00-20:20	2,21 n/a	2 n/a	2 n/a
14:20-14:40	2,32 n/a	2 n/a	2 n/a	20:20-20:40	2,17 n/a	2 n/a	2 n/a
14:40-15:00	2,29 n/a	2 n/a	2 n/a	20:40-21:00	2,12 n/a	2 n/a	2 n/a
15:00-15:20	2,42 n/a	2 n/a	2 n/a	21:00-21:20	2,16 n/a	2 n/a	2 n/a
15:20-15:40	2,28 n/a	2 n/a	2 n/a	21:20-21:40	2,13 n/a	2 n/a	2 n/a
15:40-16:00	2,28 n/a	2 n/a	2 n/a	21:40-22:00	2,16 n/a	2 n/a	2 n/a
16:00-16:20	2,35 n/a	2 n/a	2 n/a	22:00-22:20	2,29 n/a	2 n/a	2 n/a
16:20-16:40	2,3 n/a	2 n/a	2 n/a	22:20-22:40	2,21 n/a	2 n/a	2 n/a
16:40-17:00	2,29 n/a	2 n/a	2 n/a	22:40-23:00	2,18 n/a	2 n/a	2 n/a
17:00-17:20	2,28 n/a	2 n/a	2 n/a	23:00-23:20	2,2 n/a	2 n/a	2 n/a
17:20-17:40	2,24 n/a	2 n/a	2 n/a	23:20-23:40	2,2 n/a	2 n/a	2 n/a
17:40-18:00	2,29 n/a	2 n/a	2 n/a	23:40-00:00	2,16 n/a	2 n/a	2 n/a

23.07.2008 19:10 - 28.07.2008 19:10

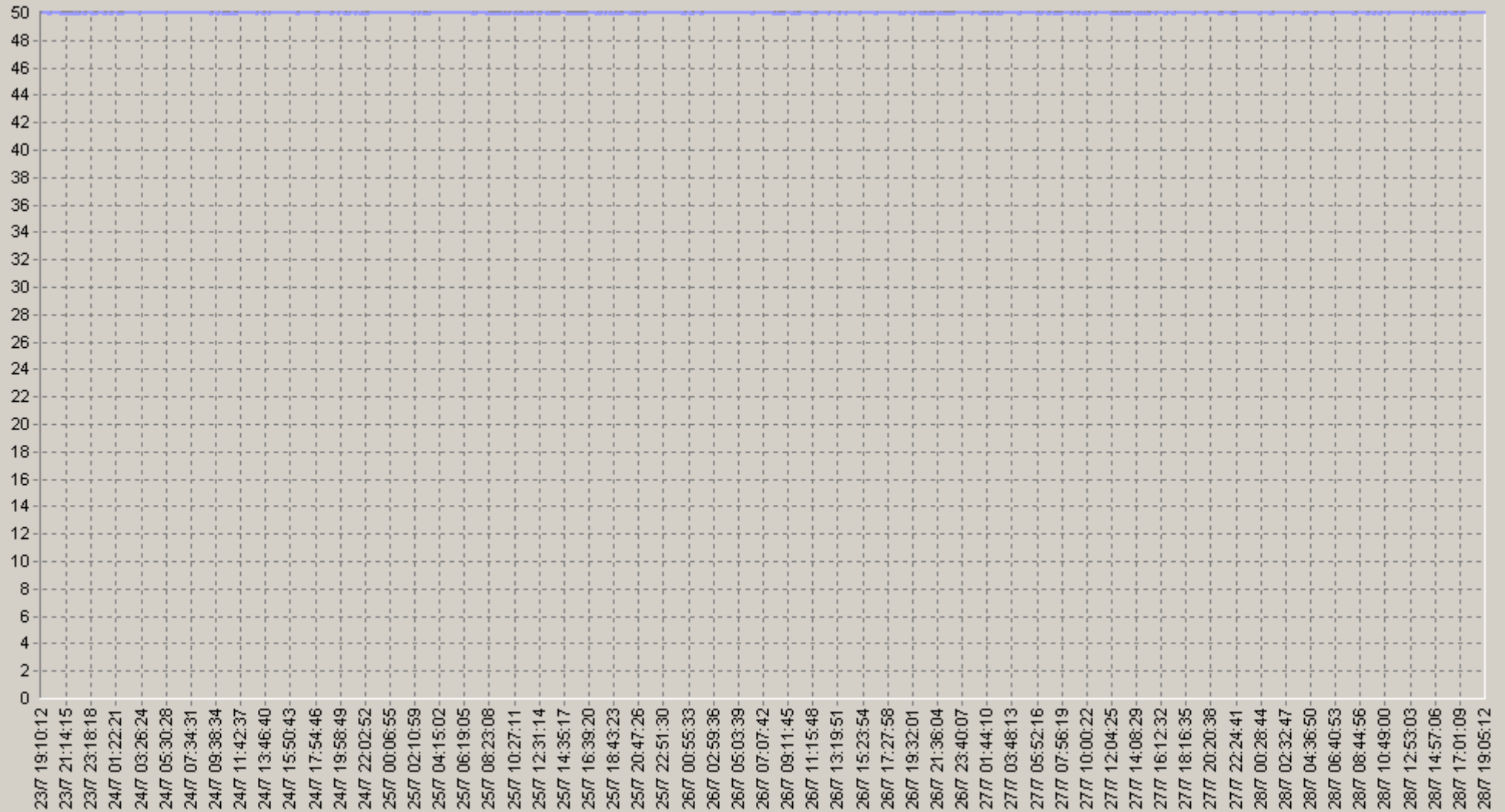
60 Power general test [10.0.3.152] Powerware 9125(0): Input Current (Amps)



◆ [BaseLine Avg] Power general test.[10.0.3.152] Powerware 9125(0): Input Current (Amps)(60)(SLA-ON-SERVER1)
 ◆ [BaseLine Percnt75 (>)] Power general test.[10.0.3.152] Powerware 9125(0): Input Current (Amps)(60)(SLA-ON-SERVER1)
 ◆ [BaseLine Percnt90 (>)] Power general test.[10.0.3.152] Powerware 9125(0): Input Current (Amps)(60)(SLA-ON-SERVER1)

23.07.2008 19:10 - 28.07.2008 19:10

ower general test.[10.0.3.152] Powerware 9125: Output Frequency (Hz)



— Power general test.[10.0.3.152] Powerware 9125: Output Frequency (Hz)(SLA-ON-SERVER1)

23.07.2008 19:10 - 28.07.2008 19:10

20 over general test [10.0.3.152] Powerware 9125: Output Frequency (Hz)

		75<		90<				75<		90<	
00:00-00:20	50 n/a	50 n/a	50 n/a	50 n/a	50 n/a	06:00-06:20	50 n/a	50 n/a	50 n/a	50 n/a	50 n/a
00:20-00:40	50 n/a	50 n/a	50 n/a	50 n/a	50 n/a	06:20-06:40	50 n/a	50 n/a	50 n/a	50 n/a	50 n/a
00:40-01:00	50 n/a	50 n/a	50 n/a	50 n/a	50 n/a	06:40-07:00	50 n/a	50 n/a	50 n/a	50 n/a	50 n/a
01:00-01:20	50 n/a	50 n/a	50 n/a	50 n/a	50 n/a	07:00-07:20	50 n/a	50 n/a	50 n/a	50 n/a	50 n/a
01:20-01:40	50 n/a	50 n/a	50 n/a	50 n/a	50 n/a	07:20-07:40	50 n/a	50 n/a	50 n/a	50 n/a	50 n/a
01:40-02:00	50 n/a	50 n/a	50 n/a	50 n/a	50 n/a	07:40-08:00	50 n/a	50 n/a	50 n/a	50 n/a	50 n/a
02:00-02:20	50 n/a	50 n/a	50 n/a	50 n/a	50 n/a	08:00-08:20	50 n/a	50 n/a	50 n/a	50 n/a	50 n/a
02:20-02:40	50 n/a	50 n/a	50 n/a	50 n/a	50 n/a	08:20-08:40	50 n/a	50 n/a	50 n/a	50 n/a	50 n/a
02:40-03:00	50 n/a	50 n/a	50 n/a	50 n/a	50 n/a	08:40-09:00	50 n/a	50 n/a	50 n/a	50 n/a	50 n/a
03:00-03:20	50 n/a	50 n/a	50 n/a	50 n/a	50 n/a	09:00-09:20	49,9 n/a	50 n/a	50 n/a	50 n/a	50 n/a
03:20-03:40	50 n/a	50 n/a	50 n/a	50 n/a	50 n/a	09:20-09:40	50 n/a	50 n/a	50 n/a	50 n/a	50 n/a
03:40-04:00	50 n/a	50 n/a	50 n/a	50 n/a	50 n/a	09:40-10:00	50 n/a	50 n/a	50 n/a	50 n/a	50 n/a
04:00-04:20	50 n/a	50 n/a	50 n/a	50 n/a	50 n/a	10:00-10:20	50 n/a	50 n/a	50 n/a	50 n/a	50 n/a
04:20-04:40	50 n/a	50 n/a	50 n/a	50 n/a	50 n/a	10:20-10:40	50 n/a	50 n/a	50 n/a	50 n/a	50 n/a
04:40-05:00	50 n/a	50 n/a	50 n/a	50 n/a	50 n/a	10:40-11:00	50 n/a	50 n/a	50 n/a	50 n/a	50 n/a
05:00-05:20	50 n/a	50 n/a	50 n/a	50 n/a	50 n/a	11:00-11:20	50 n/a	50 n/a	50 n/a	50 n/a	50 n/a
05:20-05:40	50 n/a	50 n/a	50 n/a	50 n/a	50 n/a	11:20-11:40	50 n/a	50 n/a	50 n/a	50 n/a	50 n/a
05:40-06:00	50 n/a	50 n/a	50 n/a	50 n/a	50 n/a	11:40-12:00	50 n/a	50 n/a	50 n/a	50 n/a	50 n/a

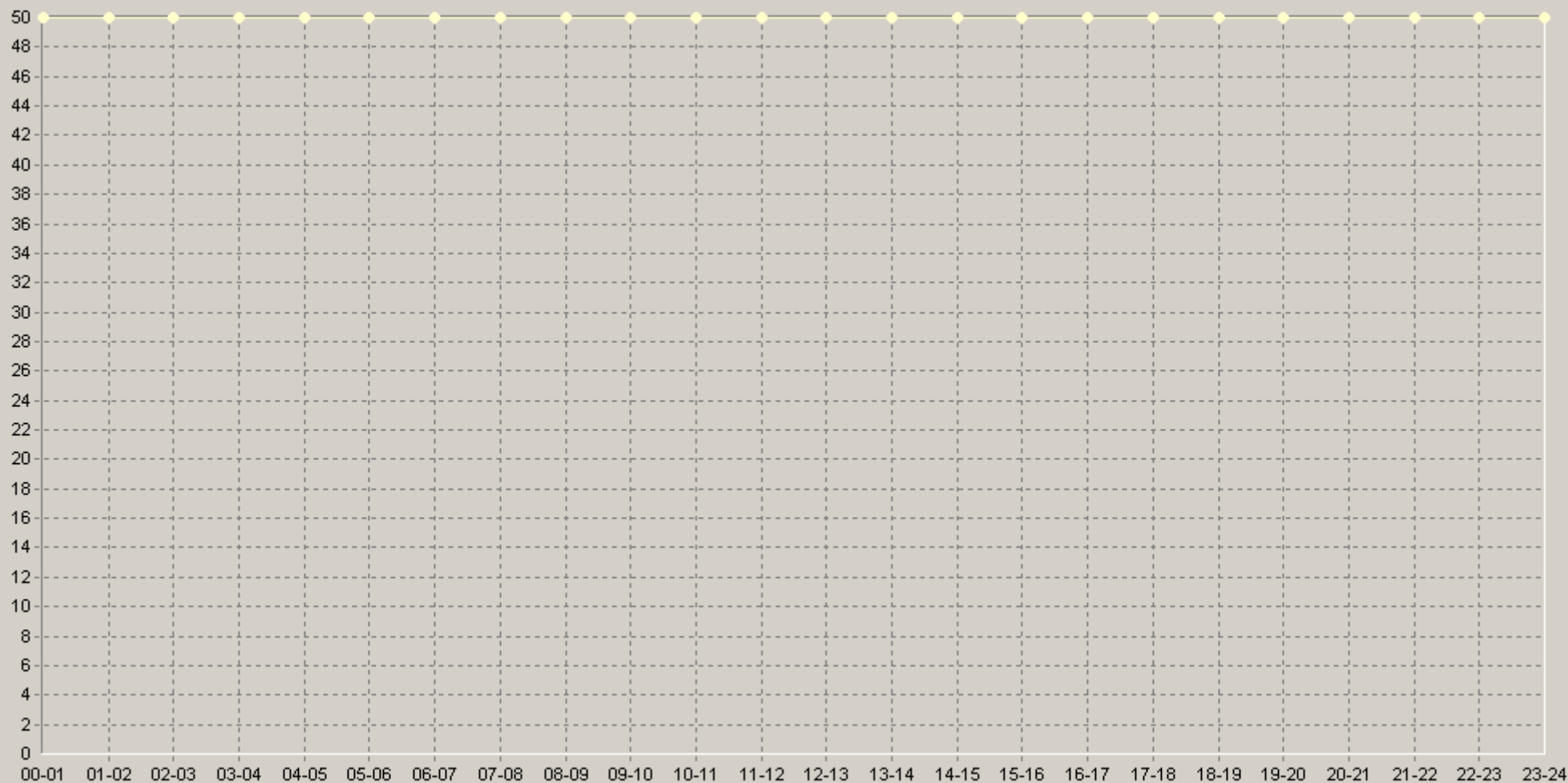
23.07.2008 19:10 - 28.07.2008 19:10

20 over general test [10.0.3.152] Powerware 9125: Output Frequency (Hz)

		75<		90<				75<		90<	
12:00-12:20	50 n/a	50 n/a	50 n/a	50 n/a	50 n/a	18:00-18:20	50 n/a	50 n/a	50 n/a	50 n/a	50 n/a
12:20-12:40	50 n/a	50 n/a	50 n/a	50 n/a	50 n/a	18:20-18:40	50 n/a	50 n/a	50 n/a	50 n/a	50 n/a
12:40-13:00	50 n/a	50 n/a	50 n/a	50 n/a	50 n/a	18:40-19:00	50 n/a	50 n/a	50 n/a	50 n/a	50 n/a
13:00-13:20	50 n/a	50 n/a	50 n/a	50 n/a	50 n/a	19:00-19:20	50 n/a	50 n/a	50 n/a	50 n/a	50 n/a
13:20-13:40	50 n/a	50 n/a	50 n/a	50 n/a	50 n/a	19:20-19:40	50 n/a	50 n/a	50 n/a	50 n/a	50 n/a
13:40-14:00	50 n/a	50 n/a	50 n/a	50 n/a	50 n/a	19:40-20:00	50 n/a	50 n/a	50 n/a	50 n/a	50 n/a
14:00-14:20	50 n/a	50 n/a	50 n/a	50 n/a	50 n/a	20:00-20:20	50 n/a	50 n/a	50 n/a	50 n/a	50 n/a
14:20-14:40	50 n/a	50 n/a	50 n/a	50 n/a	50 n/a	20:20-20:40	50 n/a	50 n/a	50 n/a	50 n/a	50 n/a
14:40-15:00	50 n/a	50 n/a	50 n/a	50 n/a	50 n/a	20:40-21:00	50 n/a	50 n/a	50 n/a	50 n/a	50 n/a
15:00-15:20	50 n/a	50 n/a	50 n/a	50 n/a	50 n/a	21:00-21:20	50 n/a	50 n/a	50 n/a	50 n/a	50 n/a
15:20-15:40	50 n/a	50 n/a	50 n/a	50 n/a	50 n/a	21:20-21:40	50 n/a	50 n/a	50 n/a	50 n/a	50 n/a
15:40-16:00	50 n/a	50 n/a	50 n/a	50 n/a	50 n/a	21:40-22:00	50 n/a	50 n/a	50 n/a	50 n/a	50 n/a
16:00-16:20	50 n/a	50 n/a	50 n/a	50 n/a	50 n/a	22:00-22:20	50 n/a	50 n/a	50 n/a	50 n/a	50 n/a
16:20-16:40	50 n/a	50 n/a	50 n/a	50 n/a	50 n/a	22:20-22:40	50 n/a	50 n/a	50 n/a	50 n/a	50 n/a
16:40-17:00	50 n/a	50 n/a	50 n/a	50 n/a	50 n/a	22:40-23:00	50 n/a	50 n/a	50 n/a	50 n/a	50 n/a
17:00-17:20	50 n/a	50 n/a	50 n/a	50 n/a	50 n/a	23:00-23:20	50 n/a	50 n/a	50 n/a	50 n/a	50 n/a
17:20-17:40	50 n/a	50 n/a	50 n/a	50 n/a	50 n/a	23:20-23:40	50 n/a	50 n/a	50 n/a	50 n/a	50 n/a
17:40-18:00	50 n/a	50 n/a	50 n/a	50 n/a	50 n/a	23:40-00:00	50 n/a	50 n/a	50 n/a	50 n/a	50 n/a

23.07.2008 19:10 - 28.07.2008 19:10

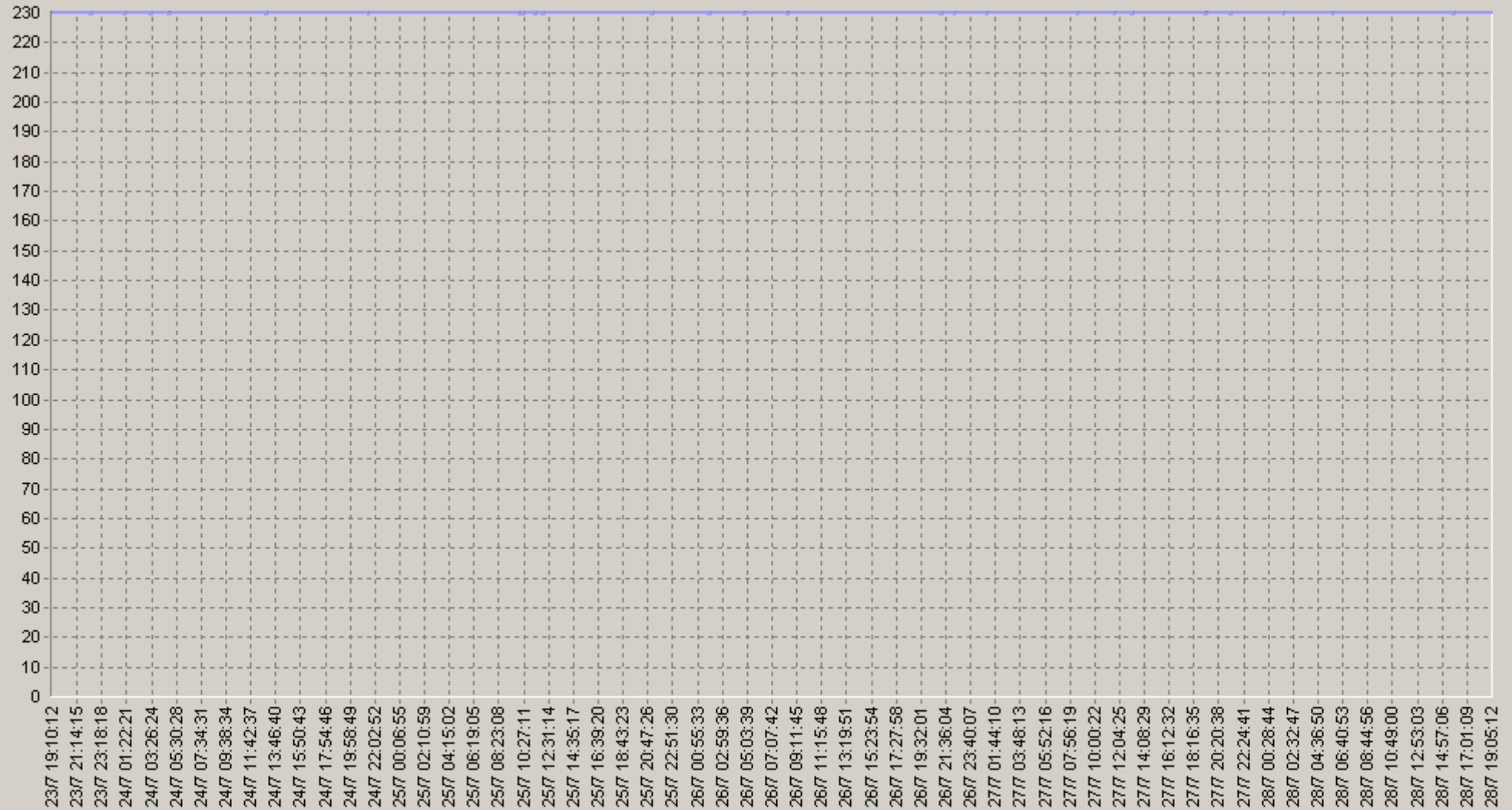
60 over general test.[10.0.3.152] Powerware 9125: Output Frequency (Hz)



- ◆ [BaseLine Avg] Power general test.[10.0.3.152] Powerware 9125: Output Frequency (Hz)(60)(SLA-ON-SERVER1)
- ◆ [BaseLine Percnt75 (<)] Power general test.[10.0.3.152] Powerware 9125: Output Frequency (Hz)(60)(SLA-ON-SERVER1)
- ◆ [BaseLine Percnt90 (<)] Power general test.[10.0.3.152] Powerware 9125: Output Frequency (Hz)(60)(SLA-ON-SERVER1)

23.07.2008 19:10 - 28.07.2008 19:10

over general test [10.0.3.152] Powerware 9125(0): Output Voltage (VAC)



— Power general test [10.0.3.152] Powerware 9125(0): Output Voltage (VAC)(SLA-ON-SERVER1)

23.07.2008 19:10 - 28.07.2008 19:10

20 over general test [10.Q.3.152] Powerware 9125(O): Output Voltage (VAC)

		75>	90>			75>	90>
00:00-00:20	230 n/a	230 n/a	230 n/a	06:00-06:20	230 n/a	230 n/a	230 n/a
00:20-00:40	230 n/a	230 n/a	230 n/a	06:20-06:40	230 n/a	230 n/a	230 n/a
00:40-01:00	230 n/a	230 n/a	230 n/a	06:40-07:00	230 n/a	230 n/a	230 n/a
01:00-01:20	230 n/a	230 n/a	230 n/a	07:00-07:20	230 n/a	230 n/a	230 n/a
01:20-01:40	230 n/a	230 n/a	230 n/a	07:20-07:40	230 n/a	230 n/a	230 n/a
01:40-02:00	230 n/a	230 n/a	230 n/a	07:40-08:00	230 n/a	230 n/a	230 n/a
02:00-02:20	230 n/a	230 n/a	230 n/a	08:00-08:20	230 n/a	230 n/a	230 n/a
02:20-02:40	230 n/a	230 n/a	230 n/a	08:20-08:40	230 n/a	230 n/a	230 n/a
02:40-03:00	230 n/a	230 n/a	230 n/a	08:40-09:00	230 n/a	230 n/a	230 n/a
03:00-03:20	230 n/a	230 n/a	230 n/a	09:00-09:20	230 n/a	230 n/a	230 n/a
03:20-03:40	230 n/a	230 n/a	230 n/a	09:20-09:40	230 n/a	230 n/a	230 n/a
03:40-04:00	230 n/a	230 n/a	230 n/a	09:40-10:00	230 n/a	230 n/a	230 n/a
04:00-04:20	230 n/a	230 n/a	230 n/a	10:00-10:20	230 n/a	230 n/a	230 n/a
04:20-04:40	230 n/a	230 n/a	230 n/a	10:20-10:40	230 n/a	230 n/a	230 n/a
04:40-05:00	230 n/a	230 n/a	230 n/a	10:40-11:00	230 n/a	230 n/a	230 n/a
05:00-05:20	230 n/a	230 n/a	230 n/a	11:00-11:20	230 n/a	230 n/a	230 n/a
05:20-05:40	230 n/a	230 n/a	230 n/a	11:20-11:40	230 n/a	230 n/a	230 n/a
05:40-06:00	230 n/a	230 n/a	230 n/a	11:40-12:00	230 n/a	230 n/a	230 n/a

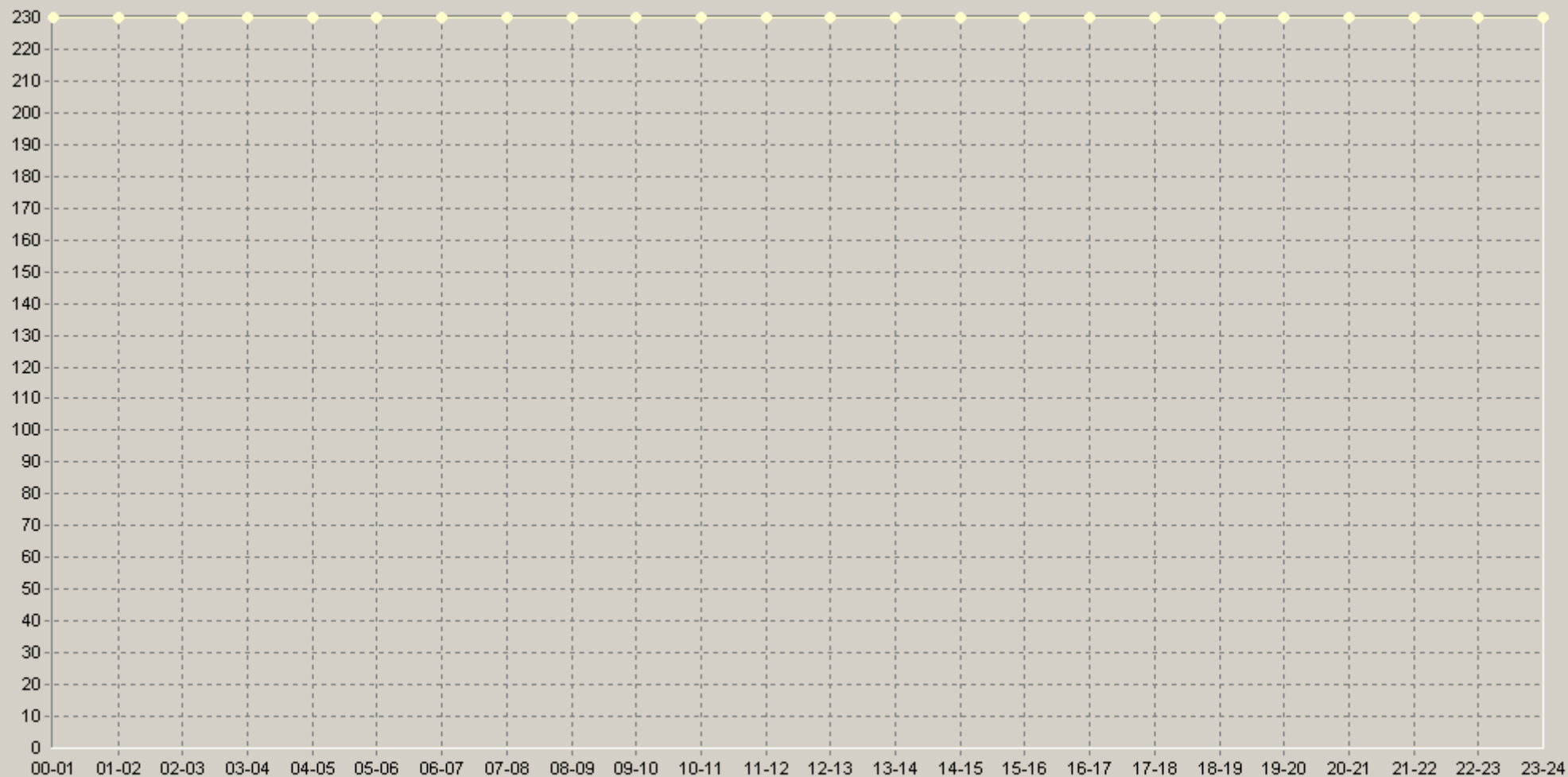
23.07.2008 19:10 - 28.07.2008 19:10

20. over general test [10.0.3.152] Powerware 9125(O): Output Voltage (VAC)

		75>	90>			75>	90>
12:00-12:20	230 n/a	230 n/a	230 n/a	18:00-18:20	230 n/a	230 n/a	230 n/a
12:20-12:40	230 n/a	230 n/a	230 n/a	18:20-18:40	230 n/a	230 n/a	230 n/a
12:40-13:00	230 n/a	230 n/a	230 n/a	18:40-19:00	230 n/a	230 n/a	230 n/a
13:00-13:20	230 n/a	230 n/a	230 n/a	19:00-19:20	230 n/a	230 n/a	230 n/a
13:20-13:40	230 n/a	230 n/a	230 n/a	19:20-19:40	230 n/a	230 n/a	230 n/a
13:40-14:00	230 n/a	230 n/a	230 n/a	19:40-20:00	230 n/a	230 n/a	230 n/a
14:00-14:20	230 n/a	230 n/a	230 n/a	20:00-20:20	230 n/a	230 n/a	230 n/a
14:20-14:40	230 n/a	230 n/a	230 n/a	20:20-20:40	230 n/a	230 n/a	230 n/a
14:40-15:00	230 n/a	230 n/a	230 n/a	20:40-21:00	230 n/a	230 n/a	230 n/a
15:00-15:20	230 n/a	230 n/a	230 n/a	21:00-21:20	230 n/a	230 n/a	230 n/a
15:20-15:40	230 n/a	230 n/a	230 n/a	21:20-21:40	230 n/a	230 n/a	230 n/a
15:40-16:00	230 n/a	230 n/a	230 n/a	21:40-22:00	230 n/a	230 n/a	230 n/a
16:00-16:20	230 n/a	230 n/a	230 n/a	22:00-22:20	230 n/a	230 n/a	230 n/a
16:20-16:40	230 n/a	230 n/a	230 n/a	22:20-22:40	230 n/a	230 n/a	230 n/a
16:40-17:00	230 n/a	230 n/a	230 n/a	22:40-23:00	230 n/a	230 n/a	230 n/a
17:00-17:20	230 n/a	230 n/a	230 n/a	23:00-23:20	230 n/a	230 n/a	230 n/a
17:20-17:40	230 n/a	230 n/a	230 n/a	23:20-23:40	230 n/a	230 n/a	230 n/a
17:40-18:00	230 n/a	230 n/a	230 n/a	23:40-00:00	230 n/a	230 n/a	230 n/a

23.07.2008 19:10 - 28.07.2008 19:10

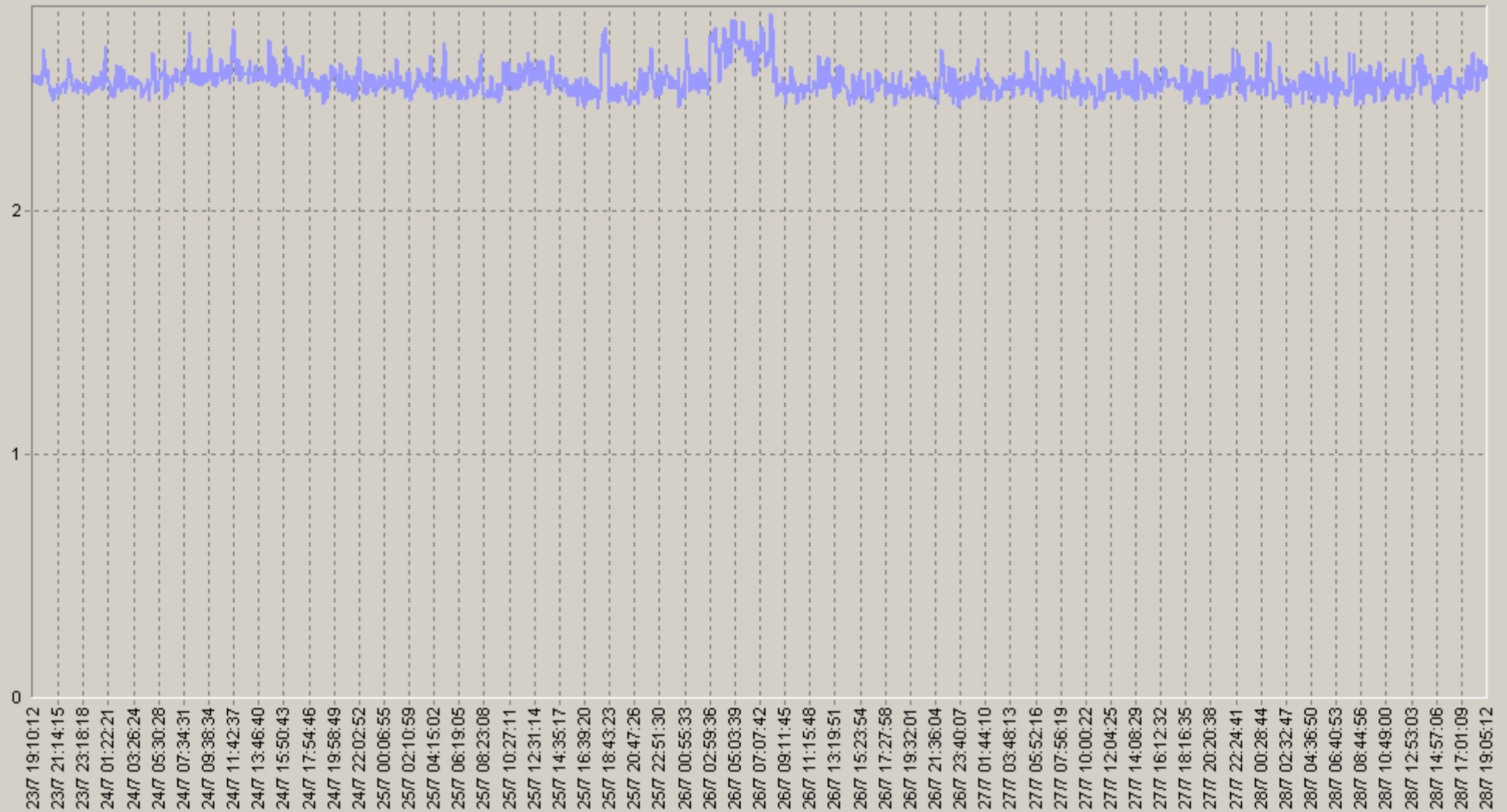
60 Power general test [10.0.3.152] Powerware 9125(0): Output Voltage (VAC)



- ◆ [BaseLine Avg] Power general test.[10.0.3.152] Powerware 9125(0): Output Voltage (VAC)(60)(SLA-ON-SERVER1)
- ◆ [BaseLine Percnt75 (>)] Power general test.[10.0.3.152] Powerware 9125(0): Output Voltage (VAC)(60)(SLA-ON-SERVER1)
- ◆ [BaseLine Percnt90 (>)] Power general test.[10.0.3.152] Powerware 9125(0): Output Voltage (VAC)(60)(SLA-ON-SERVER1)

23.07.2008 19:10 - 28.07.2008 19:10

ower general test.[10.0.3.152] Powerware 9125(0): Output Current (Amps)



— Power general test.[10.0.3.152] Powerware 9125(0): Output Current (Amps)(SLA-ON-SERVER1)

23.07.2008 19:10 - 28.07.2008 19:10

20 over general test [10.0.3.152] Powerware 9125(O): Output Current (Amps)

		75>	90>			75>	90>
00:00-00:20	3,04 n/a	2,95 n/a	2,9 n/a	06:00-06:20	3,05 n/a	2,9 n/a	2,9 n/a
00:20-00:40	3,02 n/a	2,9 n/a	2,9 n/a	06:20-06:40	3,05 n/a	2,95 n/a	2,9 n/a
00:40-01:00	3,02 n/a	2,95 n/a	2,9 n/a	06:40-07:00	3,03 n/a	2,95 n/a	2,9 n/a
01:00-01:20	3,11 n/a	3 n/a	2,95 n/a	07:00-07:20	3,07 n/a	3 n/a	2,9 n/a
01:20-01:40	3,01 n/a	2,9 n/a	2,9 n/a	07:20-07:40	3,05 n/a	2,95 n/a	2,9 n/a
01:40-02:00	3,01 n/a	2,9 n/a	2,9 n/a	07:40-08:00	3,06 n/a	3 n/a	2,9 n/a
02:00-02:20	3,04 n/a	2,95 n/a	2,9 n/a	08:00-08:20	3,13 n/a	3 n/a	2,95 n/a
02:20-02:40	3,02 n/a	2,9 n/a	2,9 n/a	08:20-08:40	3,02 n/a	2,95 n/a	2,9 n/a
02:40-03:00	2,99 n/a	2,9 n/a	2,9 n/a	08:40-09:00	3,02 n/a	2,9 n/a	2,9 n/a
03:00-03:20	3,08 n/a	3 n/a	2,9 n/a	09:00-09:20	3,02 n/a	2,9 n/a	2,9 n/a
03:20-03:40	3,06 n/a	2,95 n/a	2,9 n/a	09:20-09:40	3,01 n/a	2,9 n/a	2,9 n/a
03:40-04:00	3,05 n/a	2,95 n/a	2,9 n/a	09:40-10:00	3,03 n/a	2,9 n/a	2,9 n/a
04:00-04:20	3,06 n/a	2,95 n/a	2,9 n/a	10:00-10:20	3,04 n/a	2,95 n/a	2,9 n/a
04:20-04:40	3,05 n/a	2,95 n/a	2,9 n/a	10:20-10:40	3,03 n/a	2,9 n/a	2,9 n/a
04:40-05:00	3,05 n/a	2,95 n/a	2,9 n/a	10:40-11:00	3,01 n/a	2,9 n/a	2,9 n/a
05:00-05:20	3,12 n/a	3 n/a	2,9 n/a	11:00-11:20	3,03 n/a	2,95 n/a	2,9 n/a
05:20-05:40	3,05 n/a	2,95 n/a	2,9 n/a	11:20-11:40	3,03 n/a	2,9 n/a	2,9 n/a
05:40-06:00	3,07 n/a	3 n/a	2,9 n/a	11:40-12:00	3,06 n/a	2,95 n/a	2,9 n/a

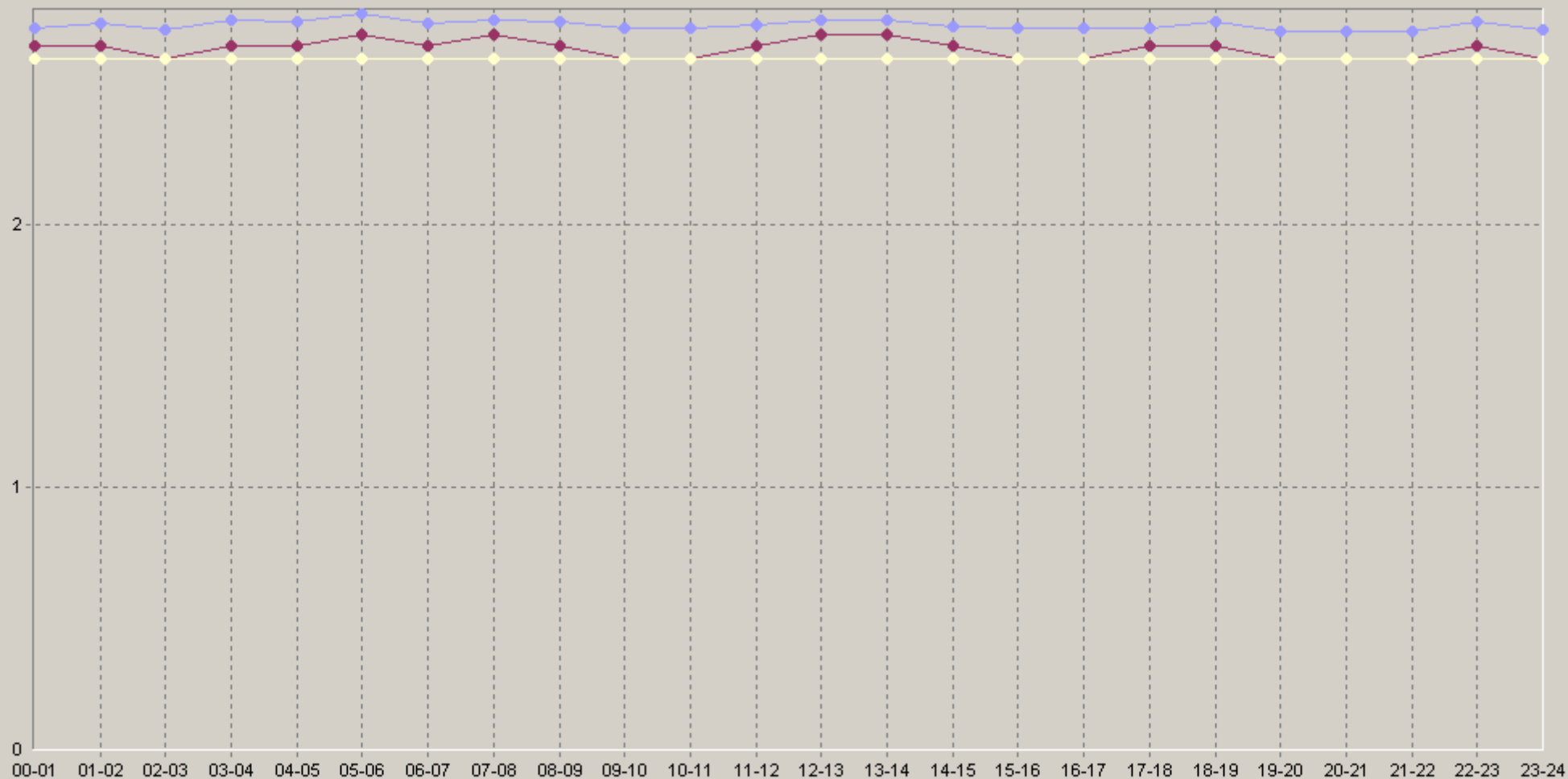
23.07.2008 19:10 - 28.07.2008 19:10

20 over general test [10.0.3.152] Powerware 9125(O): Output Current (Amps)

		75>	90>			75>	90>
12:00-12:20	3,09 n/a	3 n/a	2,9 n/a	18:00-18:20	3,09 n/a	3 n/a	2,9 n/a
12:20-12:40	3,05 n/a	3 n/a	2,9 n/a	18:20-18:40	3,07 n/a	2,95 n/a	2,9 n/a
12:40-13:00	3,04 n/a	3 n/a	2,9 n/a	18:40-19:00	3,01 n/a	2,9 n/a	2,9 n/a
13:00-13:20	3,07 n/a	3 n/a	2,9 n/a	19:00-19:20	3,03 n/a	2,9 n/a	2,9 n/a
13:20-13:40	3,06 n/a	3 n/a	2,95 n/a	19:20-19:40	3 n/a	2,9 n/a	2,9 n/a
13:40-14:00	3,04 n/a	2,95 n/a	2,9 n/a	19:40-20:00	3,02 n/a	2,9 n/a	2,9 n/a
14:00-14:20	3,06 n/a	3 n/a	2,9 n/a	20:00-20:20	3,04 n/a	2,95 n/a	2,9 n/a
14:20-14:40	3,03 n/a	2,95 n/a	2,9 n/a	20:20-20:40	3,01 n/a	2,9 n/a	2,9 n/a
14:40-15:00	3,02 n/a	2,9 n/a	2,9 n/a	20:40-21:00	2,99 n/a	2,9 n/a	2,9 n/a
15:00-15:20	3,03 n/a	2,95 n/a	2,9 n/a	21:00-21:20	3,02 n/a	2,9 n/a	2,9 n/a
15:20-15:40	3,02 n/a	2,9 n/a	2,9 n/a	21:20-21:40	3 n/a	2,9 n/a	2,9 n/a
15:40-16:00	3,02 n/a	2,9 n/a	2,9 n/a	21:40-22:00	3,01 n/a	2,95 n/a	2,9 n/a
16:00-16:20	3,04 n/a	2,95 n/a	2,9 n/a	22:00-22:20	3,11 n/a	3,05 n/a	2,95 n/a
16:20-16:40	3,02 n/a	2,9 n/a	2,9 n/a	22:20-22:40	3,04 n/a	2,95 n/a	2,9 n/a
16:40-17:00	3,02 n/a	2,9 n/a	2,9 n/a	22:40-23:00	3,01 n/a	2,9 n/a	2,9 n/a
17:00-17:20	3,03 n/a	2,95 n/a	2,9 n/a	23:00-23:20	3,02 n/a	2,9 n/a	2,9 n/a
17:20-17:40	3,03 n/a	2,95 n/a	2,9 n/a	23:20-23:40	3,03 n/a	2,9 n/a	2,9 n/a
17:40-18:00	3,01 n/a	2,9 n/a	2,9 n/a	23:40-00:00	3,01 n/a	2,9 n/a	2,9 n/a

23.07.2008 19:10 - 28.07.2008 19:10

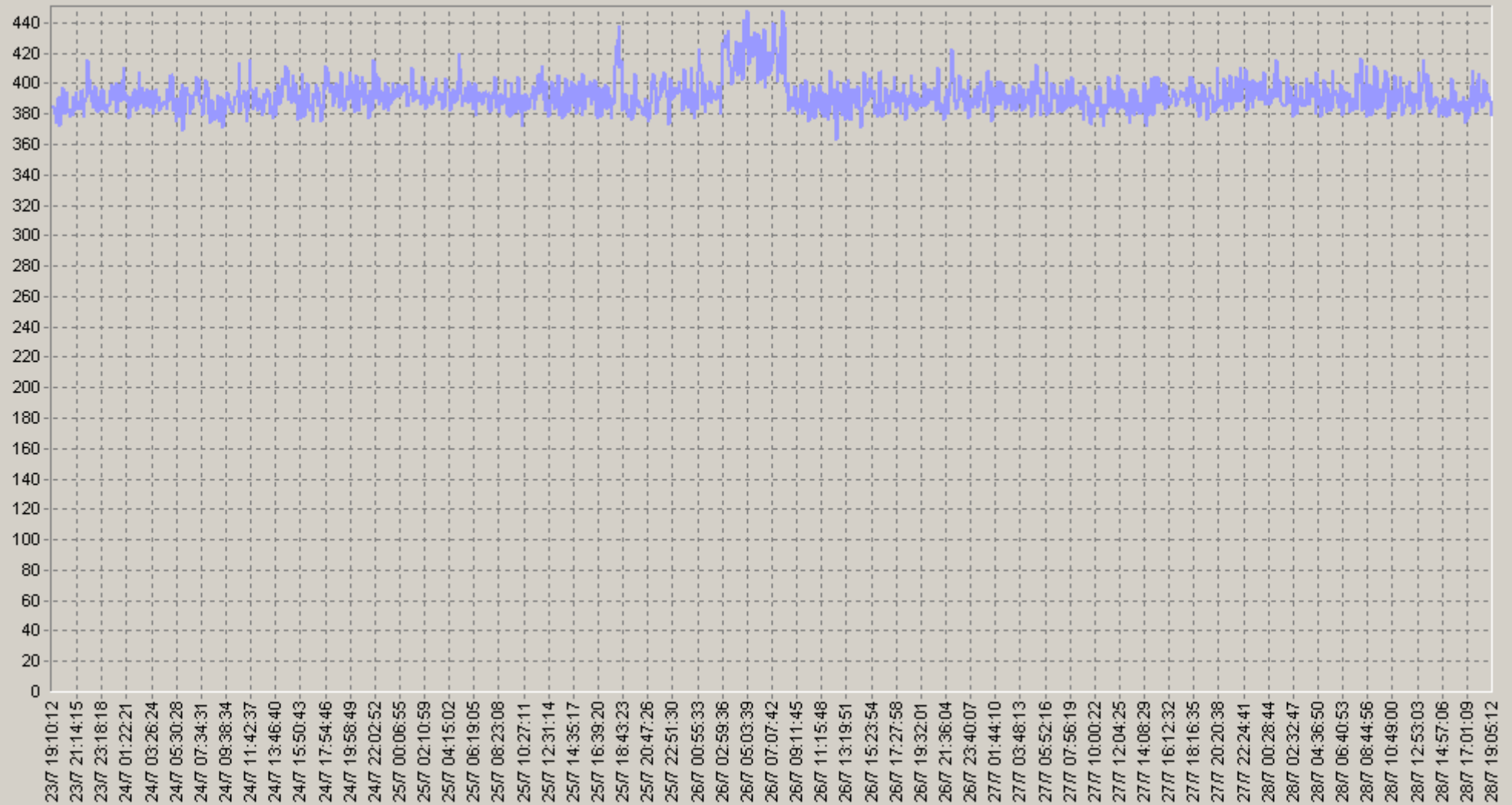
60 over general test [10.0.3.152] Powerware 9125(0): Output Current (Amps)



◆ [BaseLine Avg] Power general test.[10.0.3.152] Powerware 9125(0): Output Current (Amps)(60)(SLA-ON-SERVER1)
◆ [BaseLine Percnt75 (>)] Power general test.[10.0.3.152] Powerware 9125(0): Output Current (Amps)(60)(SLA-ON-SERVER1)
◆ [BaseLine Percnt90 (>)] Power general test.[10.0.3.152] Powerware 9125(0): Output Current (Amps)(60)(SLA-ON-SERVER1)

23.07.2008 19:10 - 28.07.2008 19:10

ower general test [10.0.3.152] Powerware 9125(O): Output Power (W)



— Power general test.[10.0.3.152] Powerware 9125(O): Output Power (W)(SLA-ON-SERVER1)

23.07.2008 19:10 - 28.07.2008 19:10

20 over general test [10.0.3.152] Powerware 9125(O): Output Power (W)

		75>	90>			75>	90>
00:00-00:20	393 n/a	380 n/a	375 n/a	06:00-06:20	396 n/a	380 n/a	370 n/a
00:20-00:40	394 n/a	380 n/a	375 n/a	06:20-06:40	397 n/a	380 n/a	380 n/a
00:40-01:00	391 n/a	380 n/a	370 n/a	06:40-07:00	393 n/a	380 n/a	370 n/a
01:00-01:20	404 n/a	390 n/a	380 n/a	07:00-07:20	399 n/a	380 n/a	380 n/a
01:20-01:40	391 n/a	380 n/a	375 n/a	07:20-07:40	394 n/a	380 n/a	370 n/a
01:40-02:00	390 n/a	380 n/a	370 n/a	07:40-08:00	395 n/a	380 n/a	380 n/a
02:00-02:20	395 n/a	380 n/a	375 n/a	08:00-08:20	403 n/a	390 n/a	380 n/a
02:20-02:40	392 n/a	380 n/a	370 n/a	08:20-08:40	389 n/a	375 n/a	370 n/a
02:40-03:00	389 n/a	380 n/a	370 n/a	08:40-09:00	387 n/a	375 n/a	370 n/a
03:00-03:20	398 n/a	380 n/a	375 n/a	09:00-09:20	387 n/a	370 n/a	370 n/a
03:20-03:40	396 n/a	380 n/a	370 n/a	09:20-09:40	387 n/a	370 n/a	365 n/a
03:40-04:00	396 n/a	380 n/a	370 n/a	09:40-10:00	387 n/a	375 n/a	370 n/a
04:00-04:20	397 n/a	380 n/a	375 n/a	10:00-10:20	389 n/a	380 n/a	370 n/a
04:20-04:40	396 n/a	380 n/a	375 n/a	10:20-10:40	389 n/a	380 n/a	370 n/a
04:40-05:00	395 n/a	380 n/a	370 n/a	10:40-11:00	387 n/a	375 n/a	370 n/a
05:00-05:20	406 n/a	390 n/a	380 n/a	11:00-11:20	391 n/a	380 n/a	370 n/a
05:20-05:40	395 n/a	375 n/a	370 n/a	11:20-11:40	390 n/a	375 n/a	370 n/a
05:40-06:00	396 n/a	380 n/a	370 n/a	11:40-12:00	391 n/a	375 n/a	370 n/a

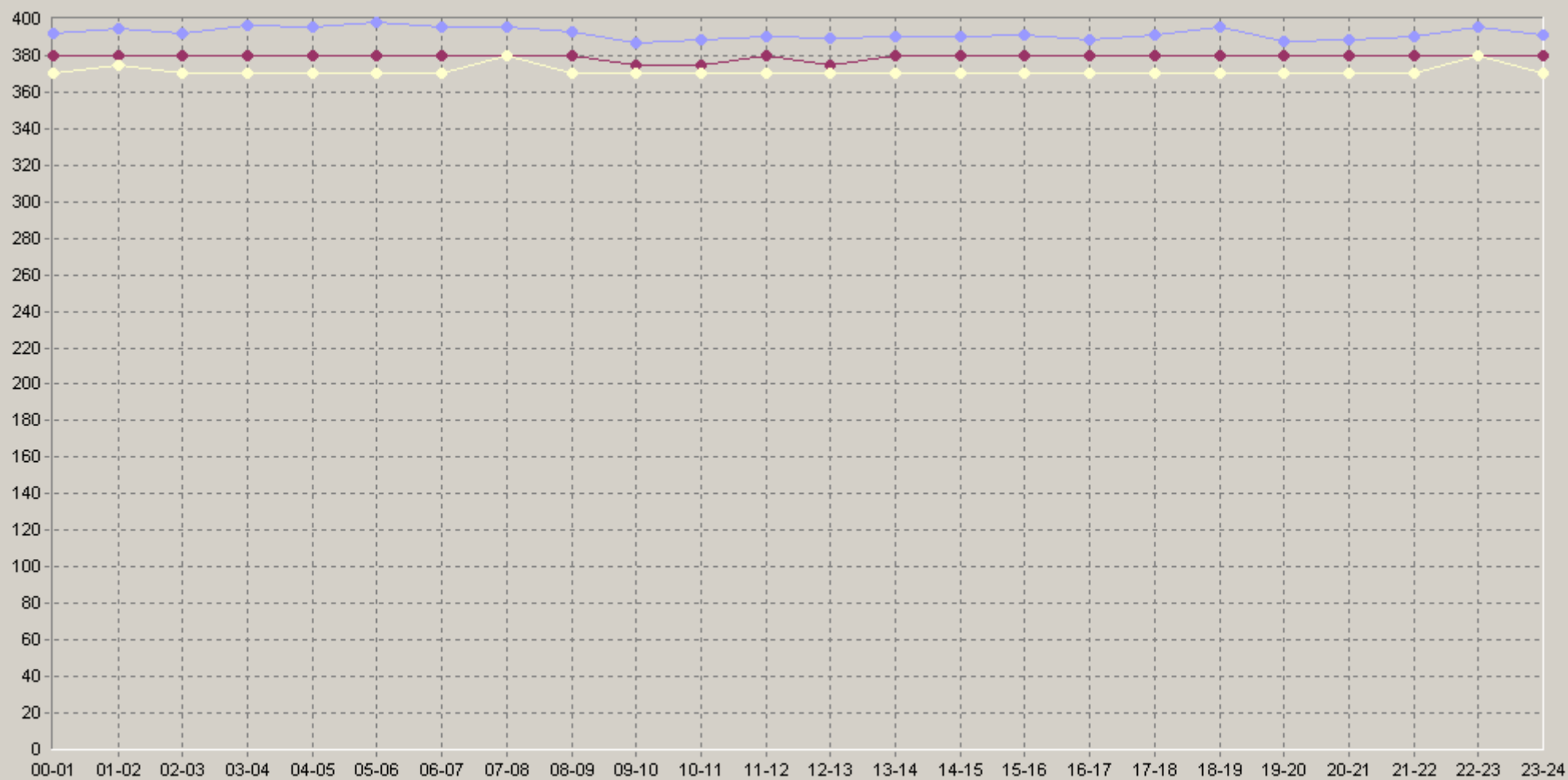
23.07.2008 19:10 - 28.07.2008 19:10

20 over general test [10.0.3.152] Powerware 9125(O): Output Power (W)

		75>	90>			75>	90>
12:00-12:20	395 n/a	380 n/a	370 n/a	18:00-18:20	401 n/a	390 n/a	380 n/a
12:20-12:40	386 n/a	370 n/a	370 n/a	18:20-18:40	396 n/a	380 n/a	370 n/a
12:40-13:00	387 n/a	375 n/a	370 n/a	18:40-19:00	389 n/a	380 n/a	370 n/a
13:00-13:20	393 n/a	380 n/a	370 n/a	19:00-19:20	390 n/a	380 n/a	370 n/a
13:20-13:40	391 n/a	380 n/a	370 n/a	19:20-19:40	385 n/a	370 n/a	370 n/a
13:40-14:00	386 n/a	370 n/a	370 n/a	19:40-20:00	389 n/a	375 n/a	370 n/a
14:00-14:20	391 n/a	380 n/a	370 n/a	20:00-20:20	391 n/a	380 n/a	370 n/a
14:20-14:40	390 n/a	370 n/a	370 n/a	20:20-20:40	388 n/a	380 n/a	370 n/a
14:40-15:00	391 n/a	380 n/a	370 n/a	20:40-21:00	386 n/a	380 n/a	370 n/a
15:00-15:20	394 n/a	380 n/a	370 n/a	21:00-21:20	394 n/a	380 n/a	370 n/a
15:20-15:40	392 n/a	380 n/a	370 n/a	21:20-21:40	388 n/a	380 n/a	370 n/a
15:40-16:00	388 n/a	380 n/a	370 n/a	21:40-22:00	390 n/a	380 n/a	370 n/a
16:00-16:20	392 n/a	380 n/a	370 n/a	22:00-22:20	403 n/a	390 n/a	380 n/a
16:20-16:40	389 n/a	380 n/a	370 n/a	22:20-22:40	393 n/a	380 n/a	370 n/a
16:40-17:00	386 n/a	375 n/a	370 n/a	22:40-23:00	391 n/a	380 n/a	380 n/a
17:00-17:20	392 n/a	380 n/a	370 n/a	23:00-23:20	392 n/a	380 n/a	370 n/a
17:20-17:40	391 n/a	380 n/a	370 n/a	23:20-23:40	393 n/a	380 n/a	370 n/a
17:40-18:00	392 n/a	380 n/a	370 n/a	23:40-00:00	390 n/a	380 n/a	370 n/a

23.07.2008 19:10 - 28.07.2008 19:10

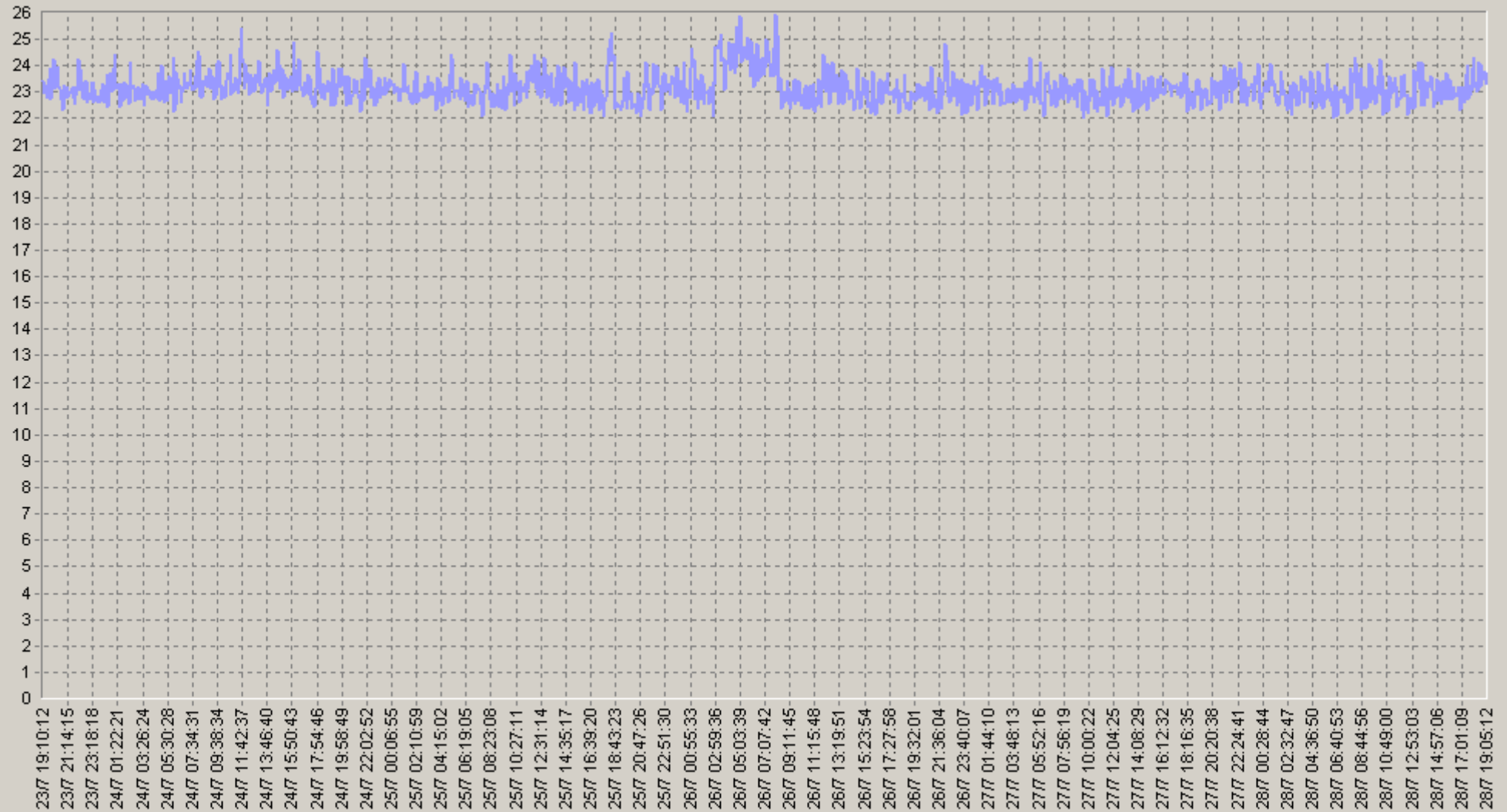
60 Power general test [10.0.3.152] Powerware 9125(0): Output Power (W)



◆ [BaseLine Avg] Power general test.[10.0.3.152] Powerware 9125(0): Output Power (W)(60)(SLA-ON-SERVER1)
 ◆ [BaseLine Percnt75 (>)] Power general test.[10.0.3.152] Powerware 9125(0): Output Power (W)(60)(SLA-ON-SERVER1)
 ◆ [BaseLine Percnt90 (>)] Power general test.[10.0.3.152] Powerware 9125(0): Output Power (W)(60)(SLA-ON-SERVER1)

23.07.2008 19:10 - 28.07.2008 19:10

ower general test.[10.0.3.152] Powerware 9125(0): Output Percent Load (%)



— Power general test.[10.0.3.152] Powerware 9125(0): Output Percent Load (%)(SLA-ON-SERVER1)

23.07.2008 19:10 - 28.07.2008 19:10

2Q over general test [10.0.3.152] Powerware 9125(O): Output Percent Load (%)

		75<	90<			75<	90<
00:00-00:20	23,2 n/a	24 n/a	25 n/a	06:00-06:20	23,2 n/a	24 n/a	25 n/a
00:20-00:40	23 n/a	24 n/a	24,5 n/a	06:20-06:40	23,2 n/a	24 n/a	25 n/a
00:40-01:00	23,1 n/a	24 n/a	25 n/a	06:40-07:00	23,1 n/a	24 n/a	24,5 n/a
01:00-01:20	23,7 n/a	24 n/a	25 n/a	07:00-07:20	23,3 n/a	24 n/a	25 n/a
01:20-01:40	23 n/a	23,5 n/a	25 n/a	07:20-07:40	23,2 n/a	23,5 n/a	24 n/a
01:40-02:00	23 n/a	23,5 n/a	24 n/a	07:40-08:00	23,2 n/a	24 n/a	25 n/a
02:00-02:20	23,1 n/a	23,5 n/a	25 n/a	08:00-08:20	23,8 n/a	25 n/a	25 n/a
02:20-02:40	23 n/a	24 n/a	24,5 n/a	08:20-08:40	23,1 n/a	24 n/a	24,5 n/a
02:40-03:00	22,8 n/a	23 n/a	24 n/a	08:40-09:00	23 n/a	23,5 n/a	24 n/a
03:00-03:20	23,3 n/a	24 n/a	25 n/a	09:00-09:20	23 n/a	24 n/a	24 n/a
03:20-03:40	23,2 n/a	24 n/a	25 n/a	09:20-09:40	23 n/a	23,5 n/a	24 n/a
03:40-04:00	23,2 n/a	24 n/a	24,5 n/a	09:40-10:00	23,1 n/a	24 n/a	24 n/a
04:00-04:20	23,3 n/a	24 n/a	25 n/a	10:00-10:20	23,1 n/a	24 n/a	25 n/a
04:20-04:40	23,2 n/a	24 n/a	25 n/a	10:20-10:40	23,1 n/a	24 n/a	25 n/a
04:40-05:00	23,2 n/a	24 n/a	25 n/a	10:40-11:00	22,9 n/a	23,5 n/a	24 n/a
05:00-05:20	23,7 n/a	24 n/a	25 n/a	11:00-11:20	23,1 n/a	24 n/a	25 n/a
05:20-05:40	23,2 n/a	24 n/a	25 n/a	11:20-11:40	23,2 n/a	24 n/a	25 n/a
05:40-06:00	23,4 n/a	24 n/a	25 n/a	11:40-12:00	23,3 n/a	24 n/a	25 n/a

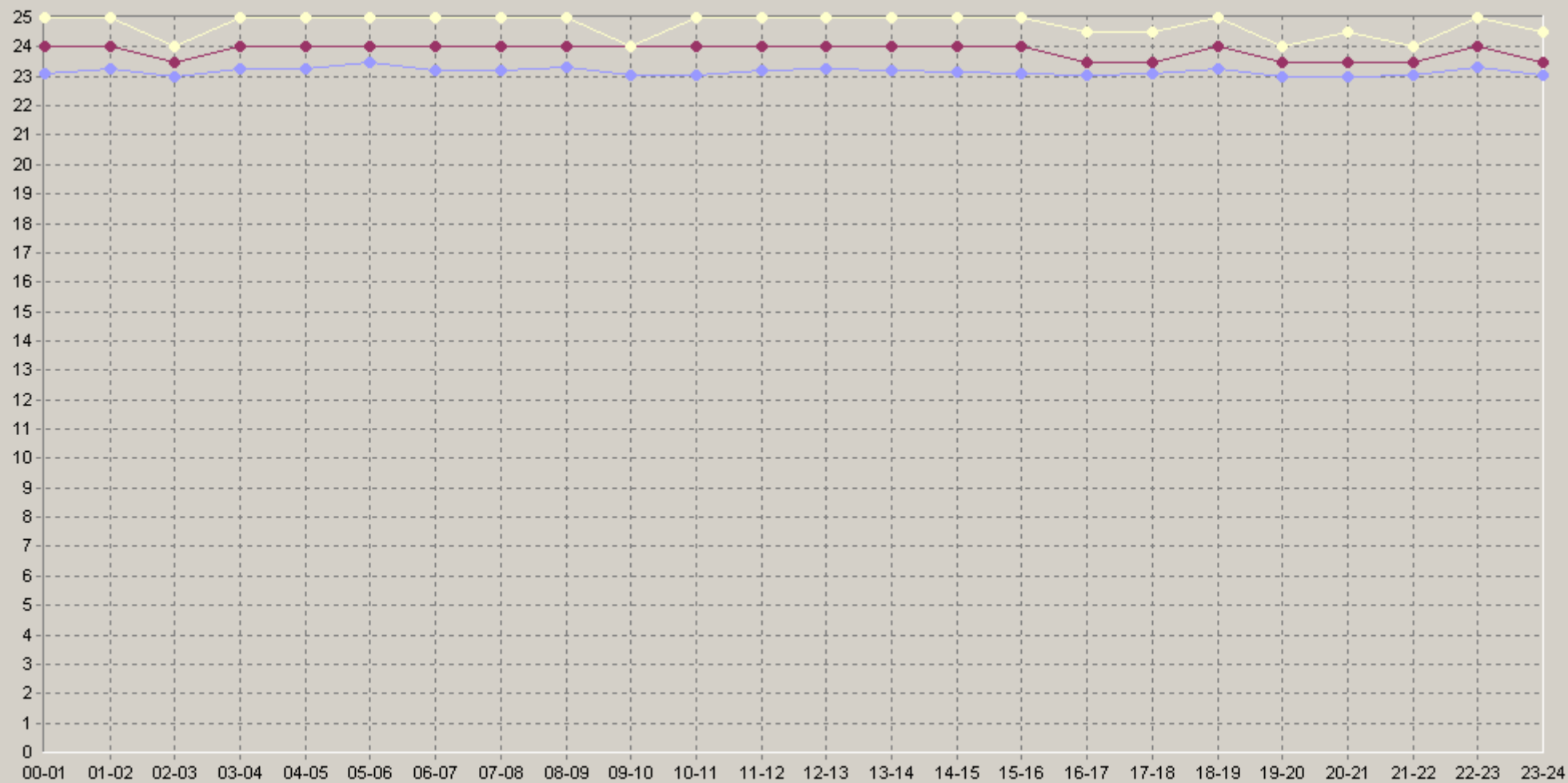
23.07.2008 19:10 - 28.07.2008 19:10

2Q over general test [10.0.3.152] Powerware 9125(O): Output Percent Load (%)

		75<	90<			75<	90<
12:00-12:20	23,6 n/a	24 n/a	25 n/a	18:00-18:20	23,5 n/a	24 n/a	25 n/a
12:20-12:40	23,1 n/a	23,5 n/a	24 n/a	18:20-18:40	23,3 n/a	24 n/a	25 n/a
12:40-13:00	23,2 n/a	23,5 n/a	25 n/a	18:40-19:00	22,9 n/a	23,5 n/a	24 n/a
13:00-13:20	23,4 n/a	24 n/a	25 n/a	19:00-19:20	23 n/a	23,5 n/a	24,5 n/a
13:20-13:40	23,3 n/a	24 n/a	25 n/a	19:20-19:40	22,8 n/a	23 n/a	24 n/a
13:40-14:00	22,9 n/a	23 n/a	24,5 n/a	19:40-20:00	23,1 n/a	24 n/a	24 n/a
14:00-14:20	23,2 n/a	24 n/a	25 n/a	20:00-20:20	23,2 n/a	24 n/a	25 n/a
14:20-14:40	23,2 n/a	23,5 n/a	25 n/a	20:20-20:40	23 n/a	23,5 n/a	24,5 n/a
14:40-15:00	23,1 n/a	24 n/a	24,5 n/a	20:40-21:00	22,7 n/a	23 n/a	23,5 n/a
15:00-15:20	23,1 n/a	24 n/a	24 n/a	21:00-21:20	23,2 n/a	24 n/a	24,5 n/a
15:20-15:40	23,1 n/a	24 n/a	25 n/a	21:20-21:40	22,9 n/a	23,5 n/a	24 n/a
15:40-16:00	23 n/a	23,5 n/a	24 n/a	21:40-22:00	23,1 n/a	24 n/a	24 n/a
16:00-16:20	23,2 n/a	24 n/a	24,5 n/a	22:00-22:20	23,7 n/a	24 n/a	25 n/a
16:20-16:40	23,1 n/a	24 n/a	24,5 n/a	22:20-22:40	23,2 n/a	24 n/a	25 n/a
16:40-17:00	23 n/a	23 n/a	24,5 n/a	22:40-23:00	23 n/a	23,5 n/a	24 n/a
17:00-17:20	23,2 n/a	24 n/a	24,5 n/a	23:00-23:20	23 n/a	23,5 n/a	24 n/a
17:20-17:40	23,1 n/a	23,5 n/a	24 n/a	23:20-23:40	23,2 n/a	24 n/a	25 n/a
17:40-18:00	23 n/a	23,5 n/a	24 n/a	23:40-00:00	23 n/a	23 n/a	24,5 n/a

23.07.2008 19:10 - 28.07.2008 19:10

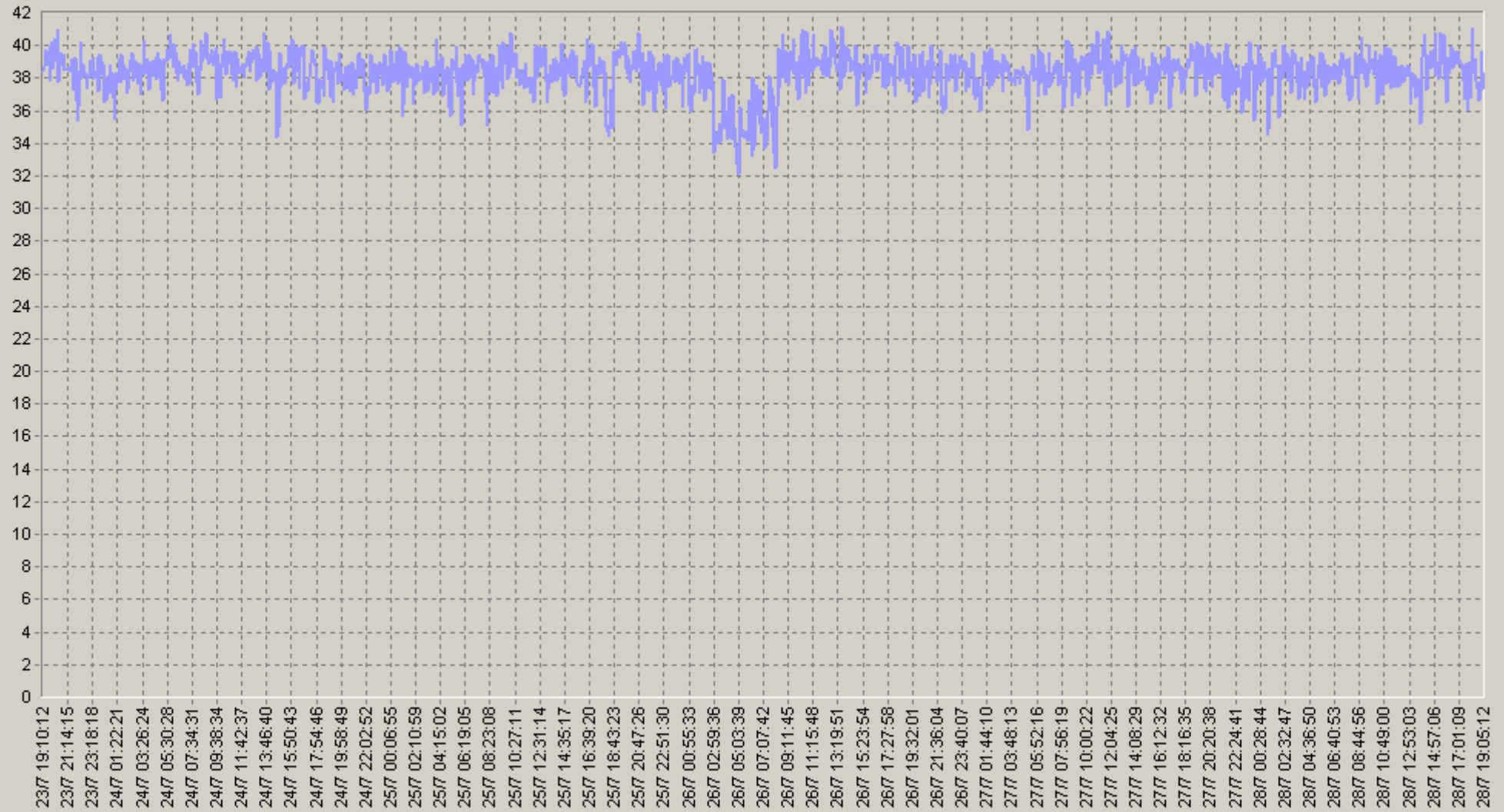
6Q over general test [10.0.3.152] Powerware 9125(O): Output Percent Load (%)



◆ [BaseLine Avg] Power general test.[10.0.3.152] Powerware 9125(O): Output Percent Load (%) (60)(SLA-ON-SERVER1)
 ◆ [BaseLine Percnt75 (<=)] Power general test.[10.0.3.152] Powerware 9125(O): Output Percent Load (%) (60)(SLA-ON-SERVER1)
 ◆ [BaseLine Percnt90 (<=)] Power general test.[10.0.3.152] Powerware 9125(O): Output Percent Load (%) (60)(SLA-ON-SERVER1)

23.07.2008 19:10 - 28.07.2008 19:10

ower general test.[10.0.3.152] Powerware 9125: UPS Battery Run Time (min)



— Power general test.[10.0.3.152] Powerware 9125: UPS Battery Run Time (min)(SLA-ON-SERVER1)

23.07.2008 19:10 - 28.07.2008 19:10

20 over general test [10.0.3.152] Powerware 9125: UPS Battery Run Time (min)

		75>	90>			75>	90>
00:00-00:20	38,2 n/a	37 n/a	35 n/a	06:00-06:20	37,8 n/a	36 n/a	34 n/a
00:20-00:40	38,2 n/a	37 n/a	35 n/a	06:20-06:40	37,9 n/a	36 n/a	35 n/a
00:40-01:00	38,3 n/a	37 n/a	35 n/a	06:40-07:00	38 n/a	36,5 n/a	35 n/a
01:00-01:20	36,7 n/a	35 n/a	33 n/a	07:00-07:20	37,4 n/a	36 n/a	34,5 n/a
01:20-01:40	38,4 n/a	37 n/a	35 n/a	07:20-07:40	38,3 n/a	37 n/a	35 n/a
01:40-02:00	38,5 n/a	37 n/a	35,5 n/a	07:40-08:00	38,2 n/a	37 n/a	35 n/a
02:00-02:20	37,9 n/a	36,5 n/a	35 n/a	08:00-08:20	36,9 n/a	35 n/a	33 n/a
02:20-02:40	38,4 n/a	37 n/a	35,5 n/a	08:20-08:40	38,9 n/a	38 n/a	35 n/a
02:40-03:00	38,5 n/a	38 n/a	35,5 n/a	08:40-09:00	38,9 n/a	37,5 n/a	35,5 n/a
03:00-03:20	37,5 n/a	36 n/a	34 n/a	09:00-09:20	38,5 n/a	37 n/a	35 n/a
03:20-03:40	37,7 n/a	36 n/a	34,5 n/a	09:20-09:40	38,8 n/a	38 n/a	36 n/a
03:40-04:00	38 n/a	36 n/a	35 n/a	09:40-10:00	38,9 n/a	38 n/a	36 n/a
04:00-04:20	37,6 n/a	36 n/a	34 n/a	10:00-10:20	38,6 n/a	37 n/a	35 n/a
04:20-04:40	37,7 n/a	36 n/a	35 n/a	10:20-10:40	38,8 n/a	37,5 n/a	36 n/a
04:40-05:00	37,5 n/a	35,5 n/a	34 n/a	10:40-11:00	38,8 n/a	38 n/a	36 n/a
05:00-05:20	36,5 n/a	35 n/a	33 n/a	11:00-11:20	38,6 n/a	37 n/a	35 n/a
05:20-05:40	38,1 n/a	36 n/a	35 n/a	11:20-11:40	38,6 n/a	37 n/a	35 n/a
05:40-06:00	37,8 n/a	36 n/a	34 n/a	11:40-12:00	38,7 n/a	38 n/a	35 n/a

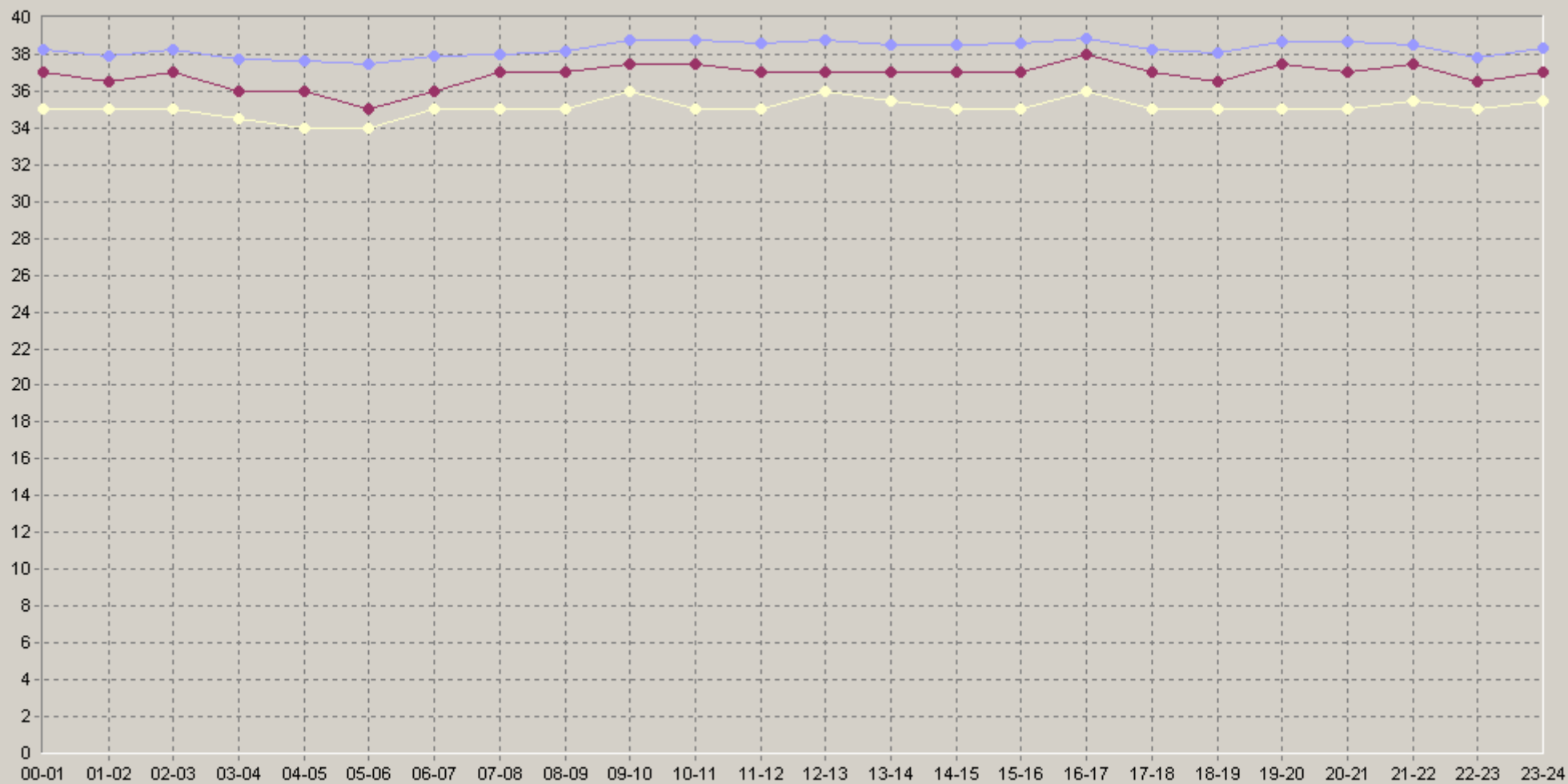
23.07.2008 19:10 - 28.07.2008 19:10

20 over general test [10.0.3.152] Powerware 9125: UPS Battery Run Time (min)

		75>	90>			75>	90>
12:00-12:20	38,6 n/a	37 n/a	35 n/a	18:00-18:20	37,5 n/a	36 n/a	34 n/a
12:20-12:40	38,6 n/a	37 n/a	36 n/a	18:20-18:40	37,9 n/a	36 n/a	35 n/a
12:40-13:00	39,2 n/a	38 n/a	37 n/a	18:40-19:00	39 n/a	38 n/a	36,5 n/a
13:00-13:20	38,5 n/a	37 n/a	36 n/a	19:00-19:20	38,3 n/a	37 n/a	35 n/a
13:20-13:40	38,4 n/a	37 n/a	35,5 n/a	19:20-19:40	39,1 n/a	38 n/a	36,5 n/a
13:40-14:00	38,7 n/a	37 n/a	35 n/a	19:40-20:00	38,6 n/a	37 n/a	35,5 n/a
14:00-14:20	38,8 n/a	37 n/a	36 n/a	20:00-20:20	38,5 n/a	37 n/a	35 n/a
14:20-14:40	38,4 n/a	37 n/a	35 n/a	20:20-20:40	38,7 n/a	37,5 n/a	36 n/a
14:40-15:00	38,3 n/a	37 n/a	35 n/a	20:40-21:00	38,8 n/a	38 n/a	36 n/a
15:00-15:20	38,3 n/a	36,5 n/a	34 n/a	21:00-21:20	38,2 n/a	37 n/a	35 n/a
15:20-15:40	38,7 n/a	37,5 n/a	35 n/a	21:20-21:40	38,5 n/a	37 n/a	36 n/a
15:40-16:00	38,8 n/a	38 n/a	36,5 n/a	21:40-22:00	38,8 n/a	38 n/a	36,5 n/a
16:00-16:20	38,4 n/a	37 n/a	35 n/a	22:00-22:20	37 n/a	35,5 n/a	34 n/a
16:20-16:40	39 n/a	38 n/a	37 n/a	22:20-22:40	38,3 n/a	37 n/a	35 n/a
16:40-17:00	39,2 n/a	38,5 n/a	36,5 n/a	22:40-23:00	38,2 n/a	37 n/a	35,5 n/a
17:00-17:20	37,9 n/a	36,5 n/a	35 n/a	23:00-23:20	38 n/a	37 n/a	35 n/a
17:20-17:40	38,5 n/a	38 n/a	36 n/a	23:20-23:40	38,3 n/a	37 n/a	36 n/a
17:40-18:00	38,3 n/a	37,5 n/a	35 n/a	23:40-00:00	38,6 n/a	38 n/a	36 n/a

23.07.2008 19:10 - 28.07.2008 19:10

60 over general test.[10.0.3.152] Powerware 9125: UPS Battery Run Time (min)



◆ [BaseLine Avg] Power general test.[10.0.3.152] Powerware 9125: UPS Battery Run Time (min)(60)(SLA-ON-SERVER1)
◆ [BaseLine Percnt75 (>)] Power general test.[10.0.3.152] Powerware 9125: UPS Battery Run Time (min)(60)(SLA-ON-SERVER1)
◆ [BaseLine Percnt90 (>)] Power general test.[10.0.3.152] Powerware 9125: UPS Battery Run Time (min)(60)(SLA-ON-SERVER1)