

27.04.2008 14:00 - 28.04.2008 15:00



| MB-II  |                |             |             |             |              |      |
|--|----------------|-------------|-------------|-------------|--------------|------|
|  | ■              | ■           | ■           | ■           | ■            |      |
| [10.0.3.11] Device SNMP Availability (%)       | >=99<br>99,3%  | <99<br>0%   | <96<br>0%   | <94<br>0%   | <90<br>0,68% | 1480 |
| [10.0.3.11] Maximum Port Utilization (%)       | <=25<br>100%   | >25<br>0%   | >30<br>0%   | >35<br>0%   | >40<br>0%    | 1479 |
| [10.0.3.11] Maximum Port Errors (%)            | <=0,01<br>100% | >0,01<br>0% | >0,02<br>0% | >0,05<br>0% | >0,1<br>0%   | 1479 |
| [10.0.3.11] Maximum Port Broadcast Packets (%) | <=5<br>100%    | >5<br>0%    | >6<br>0%    | >7<br>0%    | >8<br>0%     | 1479 |
|  | 99,3%          | →           | 99,3%       | →           | 99,3%        | →    |
|  |                |             |             |             |              | 1480 |

(2 )

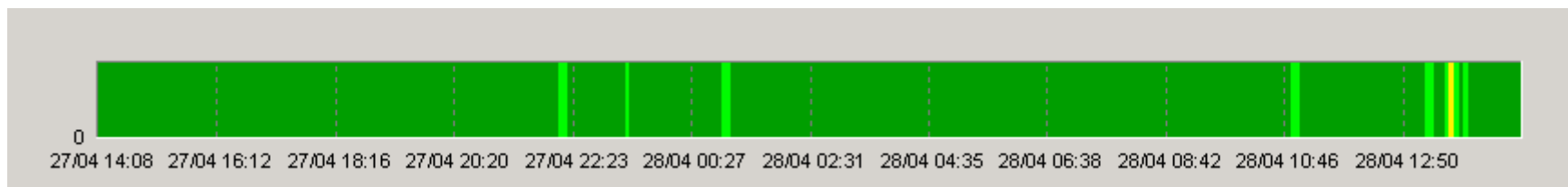
ProLAN

ProLAN.

PROLAN,

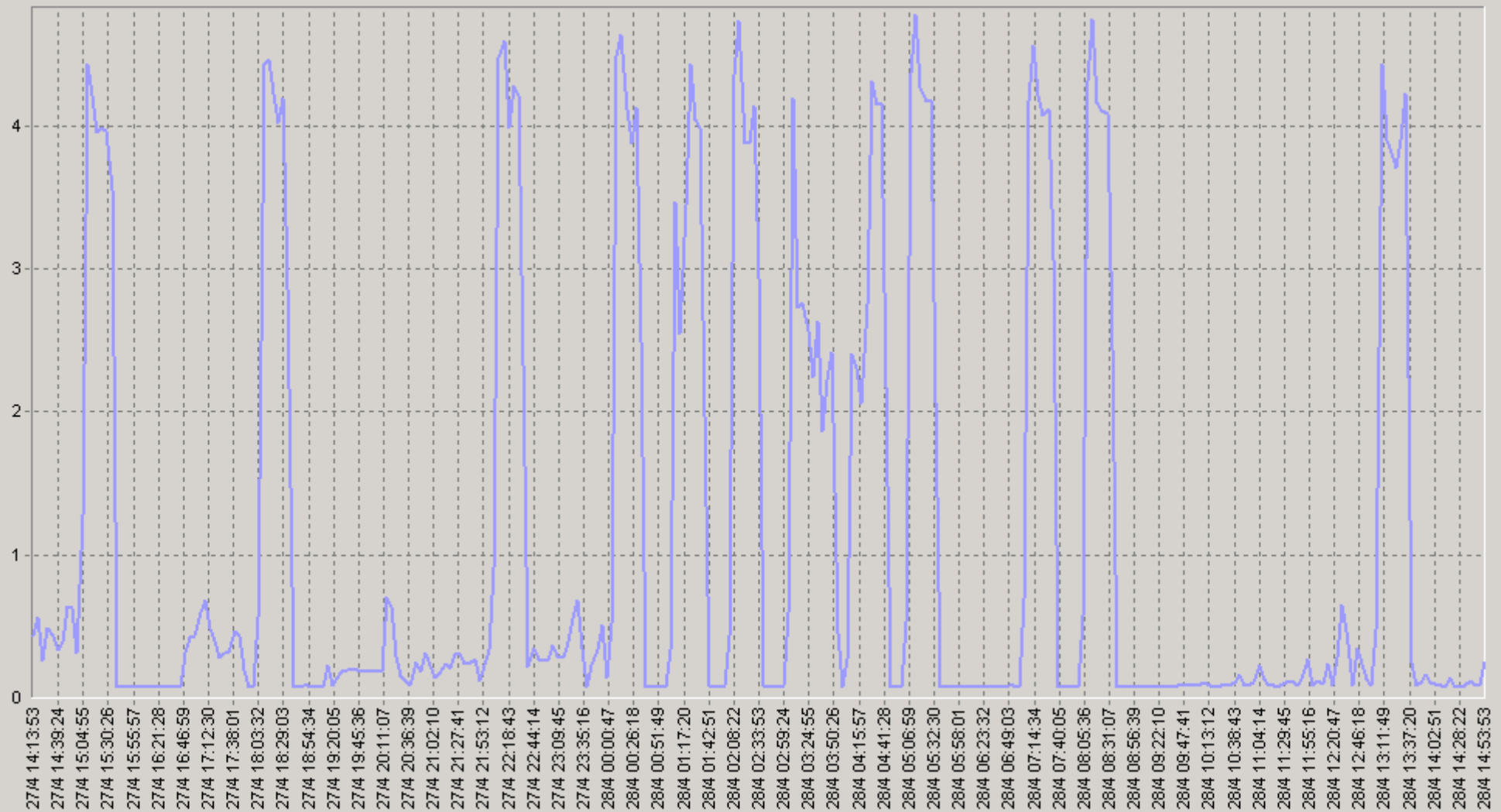
PROLAN  
PARTNER@PROLAN.RU

(« »)



27.04.2008 14:00 - 28.04.2008 15:00

## [10.0.3.11] Maximum Port Utilization (%)



— [10.0.3.11] Maximum Port Utilization (%) (SLA-ON-SERVER3)

27.04.2008 14:00 - 28.04.2008 15:00

## 20. [10.0.3.11] Maximum Port Utilization (%)

|             |      | 75<  | 90<  |             |      | 75<  | 90<  |
|-------------|------|------|------|-------------|------|------|------|
| 00:00-00:20 | 3,24 | 5,55 | 5,62 | 06:00-06:20 | 0,09 | 0,09 | 0,09 |
| 00:20-00:40 | 3,46 | 5,61 | 5,66 | 06:20-06:40 | 0,08 | 0,09 | 0,09 |
| 00:40-01:00 | 0,08 | 0,09 | 0,09 | 06:40-07:00 | 0,09 | 0,09 | 0,11 |
| 01:00-01:20 | 2,36 | 4,01 | 4,3  | 07:00-07:20 | 3,25 | 5,28 | 5,42 |
| 01:20-01:40 | 4,29 | 5,52 | 5,61 | 07:20-07:40 | 3,62 | 5,55 | 5,63 |
| 01:40-02:00 | 0,09 | 0,09 | 0,11 | 07:40-08:00 | 0,09 | 0,09 | 0,09 |
| 02:00-02:20 | 3,15 | 5,43 | 5,57 | 08:00-08:20 | 3,28 | 5,55 | 5,59 |
| 02:20-02:40 | 3,56 | 5,39 | 5,48 | 08:20-08:40 | 3,45 | 5,57 | 5,65 |
| 02:40-03:00 | 0,09 | 0,09 | 0,12 | 08:40-09:00 | 0,09 | 0,09 | 0,09 |
| 03:00-03:20 | 2,66 | 3,92 | 4,58 | 09:00-09:20 | 0,09 | 0,09 | 0,1  |
| 03:20-03:40 | 2,61 | 2,96 | 3,28 | 09:20-09:40 | 0,09 | 0,09 | 0,1  |
| 03:40-04:00 | 1,53 | 2,38 | 2,66 | 09:40-10:00 | 0,1  | 0,1  | 0,13 |
| 04:00-04:20 | 1,68 | 2,62 | 2,99 | 10:00-10:20 | 0,1  | 0,1  | 0,12 |
| 04:20-04:40 | 3,93 | 5,15 | 5,8  | 10:20-10:40 | 0,1  | 0,1  | 0,12 |
| 04:40-05:00 | 1,2  | 0,11 | 5,6  | 10:40-11:00 | 0,12 | 0,13 | 0,16 |
| 05:00-05:20 | 3,3  | 5,6  | 5,71 | 11:00-11:20 | 0,15 | 0,14 | 0,28 |
| 05:20-05:40 | 3,42 | 5,64 | 5,67 | 11:20-11:40 | 0,1  | 0,11 | 0,12 |
| 05:40-06:00 | 0,09 | 0,09 | 0,09 | 11:40-12:00 | 0,17 | 0,19 | 0,36 |

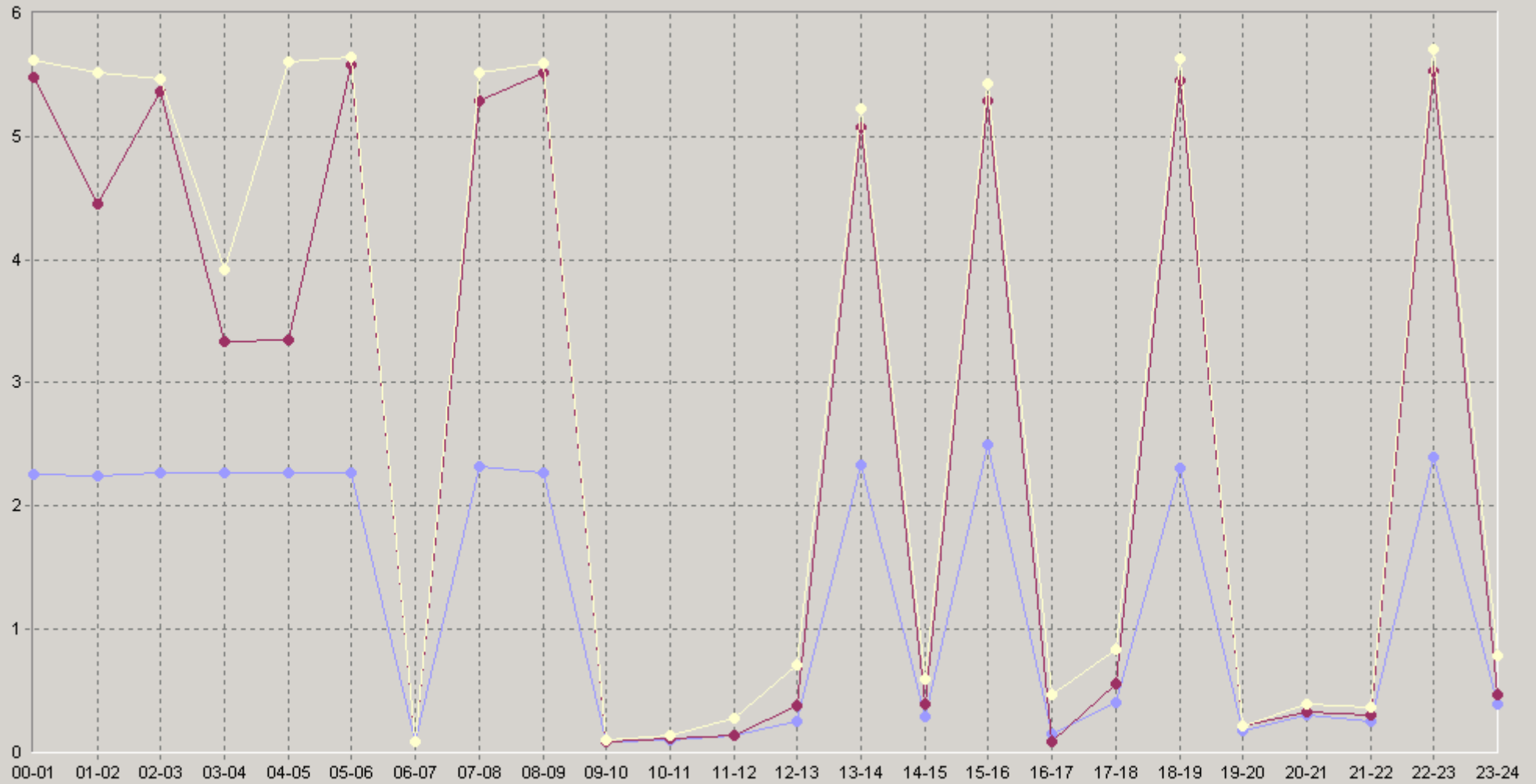
27.04.2008 14:00 - 28.04.2008 15:00

## 20. [10.0.3.11] Maximum Port Utilization (%)

|             |      | 75<  | 90<  |             |      | 75<  | 90<  |
|-------------|------|------|------|-------------|------|------|------|
| 12:00-12:20 | 0,15 | 0,16 | 0,28 | 18:00-18:20 | 3,15 | 5,48 | 5,52 |
| 12:20-12:40 | 0,41 | 0,71 | 0,72 | 18:20-18:40 | 3,68 | 5,64 | 5,68 |
| 12:40-13:00 | 0,22 | 0,31 | 0,41 | 18:40-19:00 | 0,09 | 0,09 | 0,1  |
| 13:00-13:20 | 3,02 | 5,08 | 5,2  | 19:00-19:20 | 0,13 | 0,1  | 0,11 |
| 13:20-13:40 | 3,76 | 5,2  | 5,31 | 19:20-19:40 | 0,18 | 0,21 | 0,21 |
| 13:40-14:00 | 0,12 | 0,11 | 0,16 | 19:40-20:00 | 0,21 | 0,21 | 0,22 |
| 14:00-14:20 | 0,19 | 0,16 | 0,4  | 20:00-20:20 | 0,46 | 0,29 | 1,07 |
| 14:20-14:40 | 0,29 | 0,32 | 0,55 | 20:20-20:40 | 0,21 | 0,32 | 0,37 |
| 14:40-15:00 | 0,35 | 0,51 | 0,69 | 20:40-21:00 | 0,26 | 0,32 | 0,34 |
| 15:00-15:20 | 3,99 | 5,24 | 5,33 | 21:00-21:20 | 0,2  | 0,25 | 0,28 |
| 15:20-15:40 | 3,81 | 5,43 | 5,53 | 21:20-21:40 | 0,3  | 0,36 | 0,37 |
| 15:40-16:00 | 0,09 | 0,09 | 0,09 | 21:40-22:00 | 0,25 | 0,35 | 0,4  |
| 16:00-16:20 | 0,09 | 0,09 | 0,09 | 22:00-22:20 | 3,28 | 5,53 | 5,68 |
| 16:20-16:40 | 0,08 | 0,09 | 0,09 | 22:20-22:40 | 3,6  | 5,71 | 5,72 |
| 16:40-17:00 | 0,29 | 0,48 | 0,52 | 22:40-23:00 | 0,3  | 0,33 | 0,37 |
| 17:00-17:20 | 0,6  | 0,83 | 0,95 | 23:00-23:20 | 0,34 | 0,35 | 0,4  |
| 17:20-17:40 | 0,37 | 0,39 | 0,55 | 23:20-23:40 | 0,51 | 0,54 | 1,11 |
| 17:40-18:00 | 0,25 | 0,28 | 0,58 | 23:40-00:00 | 0,32 | 0,44 | 0,55 |

27.04.2008 14:00 - 28.04.2008 15:00

## 60: [10.0.3.11] Maximum Port Utilization (%)

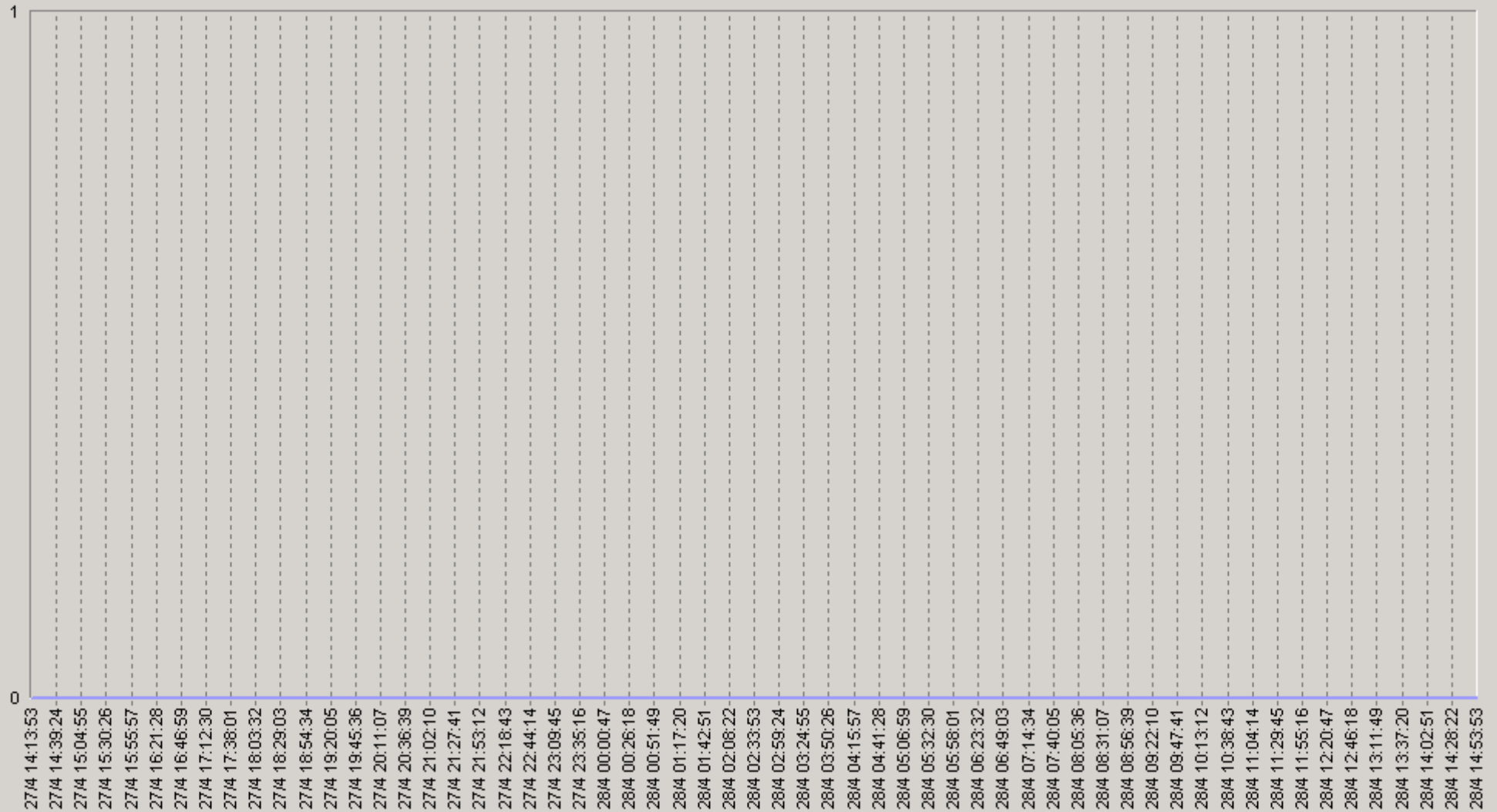


◆ [BaseLine Avg] [10.0.3.11] Maximum Port Utilization (%) (60) (SLA-ON-SERVER3)  
 ◆ [BaseLine Percnt90 (<)] [10.0.3.11] Maximum Port Utilization (%) (60) (SLA-ON-SERVER3)

◆ [BaseLine Percnt75 (<)] [10.0.3.11] Maximum Port Utilization (%) (60) (SLA-ON-SERVER3)

27.04.2008 14:00 - 28.04.2008 15:00

## [10.0.3.11] Maximum Port Errors (%)



— [10.0.3.11] Maximum Port Errors (%) (SLA-ON-SERVER3)

27.04.2008 14:00 - 28.04.2008 15:00

## 20. [10.0.3.11] Maximum Port Errors (%)

|             |   | 75< | 90< |             |   | 75< | 90< |
|-------------|---|-----|-----|-------------|---|-----|-----|
| 00:00-00:20 | 0 | 0   | 0   | 06:00-06:20 | 0 | 0   | 0   |
| 00:20-00:40 | 0 | 0   | 0   | 06:20-06:40 | 0 | 0   | 0   |
| 00:40-01:00 | 0 | 0   | 0   | 06:40-07:00 | 0 | 0   | 0   |
| 01:00-01:20 | 0 | 0   | 0   | 07:00-07:20 | 0 | 0   | 0   |
| 01:20-01:40 | 0 | 0   | 0   | 07:20-07:40 | 0 | 0   | 0   |
| 01:40-02:00 | 0 | 0   | 0   | 07:40-08:00 | 0 | 0   | 0   |
| 02:00-02:20 | 0 | 0   | 0   | 08:00-08:20 | 0 | 0   | 0   |
| 02:20-02:40 | 0 | 0   | 0   | 08:20-08:40 | 0 | 0   | 0   |
| 02:40-03:00 | 0 | 0   | 0   | 08:40-09:00 | 0 | 0   | 0   |
| 03:00-03:20 | 0 | 0   | 0   | 09:00-09:20 | 0 | 0   | 0   |
| 03:20-03:40 | 0 | 0   | 0   | 09:20-09:40 | 0 | 0   | 0   |
| 03:40-04:00 | 0 | 0   | 0   | 09:40-10:00 | 0 | 0   | 0   |
| 04:00-04:20 | 0 | 0   | 0   | 10:00-10:20 | 0 | 0   | 0   |
| 04:20-04:40 | 0 | 0   | 0   | 10:20-10:40 | 0 | 0   | 0   |
| 04:40-05:00 | 0 | 0   | 0   | 10:40-11:00 | 0 | 0   | 0   |
| 05:00-05:20 | 0 | 0   | 0   | 11:00-11:20 | 0 | 0   | 0   |
| 05:20-05:40 | 0 | 0   | 0   | 11:20-11:40 | 0 | 0   | 0   |
| 05:40-06:00 | 0 | 0   | 0   | 11:40-12:00 | 0 | 0   | 0   |

27.04.2008 14:00 - 28.04.2008 15:00

## 20. [10.0.3.11] Maximum Port Errors (%)

|             |   | 75< | 90< |             |   | 75< | 90< |
|-------------|---|-----|-----|-------------|---|-----|-----|
| 12:00-12:20 | 0 | 0   | 0   | 18:00-18:20 | 0 | 0   | 0   |
| 12:20-12:40 | 0 | 0   | 0   | 18:20-18:40 | 0 | 0   | 0   |
| 12:40-13:00 | 0 | 0   | 0   | 18:40-19:00 | 0 | 0   | 0   |
| 13:00-13:20 | 0 | 0   | 0   | 19:00-19:20 | 0 | 0   | 0   |
| 13:20-13:40 | 0 | 0   | 0   | 19:20-19:40 | 0 | 0   | 0   |
| 13:40-14:00 | 0 | 0   | 0   | 19:40-20:00 | 0 | 0   | 0   |
| 14:00-14:20 | 0 | 0   | 0   | 20:00-20:20 | 0 | 0   | 0   |
| 14:20-14:40 | 0 | 0   | 0   | 20:20-20:40 | 0 | 0   | 0   |
| 14:40-15:00 | 0 | 0   | 0   | 20:40-21:00 | 0 | 0   | 0   |
| 15:00-15:20 | 0 | 0   | 0   | 21:00-21:20 | 0 | 0   | 0   |
| 15:20-15:40 | 0 | 0   | 0   | 21:20-21:40 | 0 | 0   | 0   |
| 15:40-16:00 | 0 | 0   | 0   | 21:40-22:00 | 0 | 0   | 0   |
| 16:00-16:20 | 0 | 0   | 0   | 22:00-22:20 | 0 | 0   | 0   |
| 16:20-16:40 | 0 | 0   | 0   | 22:20-22:40 | 0 | 0   | 0   |
| 16:40-17:00 | 0 | 0   | 0   | 22:40-23:00 | 0 | 0   | 0   |
| 17:00-17:20 | 0 | 0   | 0   | 23:00-23:20 | 0 | 0   | 0   |
| 17:20-17:40 | 0 | 0   | 0   | 23:20-23:40 | 0 | 0   | 0   |
| 17:40-18:00 | 0 | 0   | 0   | 23:40-00:00 | 0 | 0   | 0   |



27.04.2008 14:00 - 28.04.2008 15:00

## 60. [10.0.3.11] Maximum Port Errors (%)



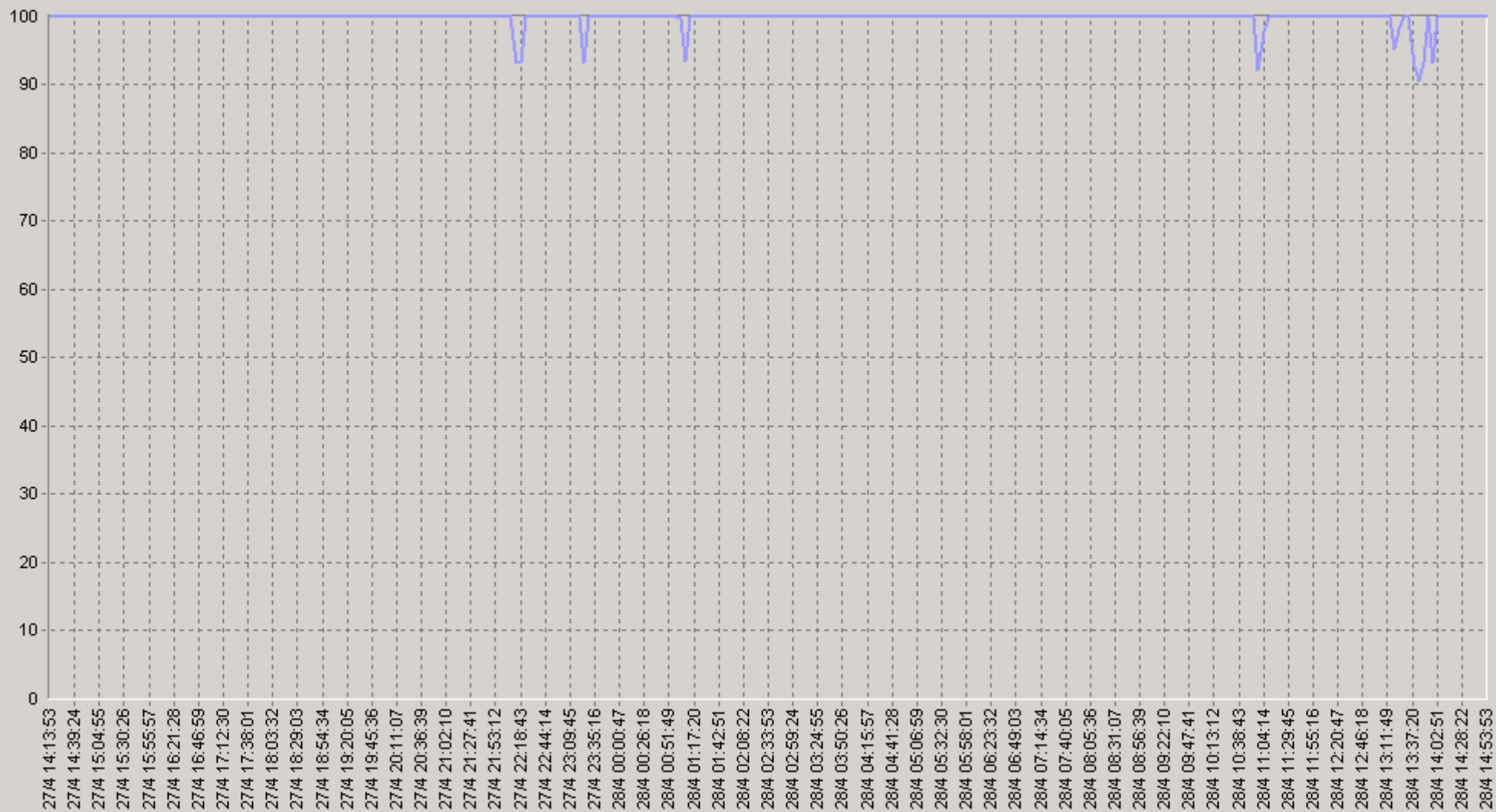
◆ [BaseLine Avg] [10.0.3.11] Maximum Port Errors (%) (60) (SLA-ON-SERVER3)

◆ [BaseLine Percnt75 (&lt;)] [10.0.3.11] Maximum Port Errors (%) (60) (SLA-ON-SERVER3)

◆ [BaseLine Percnt90 (&lt;)] [10.0.3.11] Maximum Port Errors (%) (60) (SLA-ON-SERVER3)

27.04.2008 14:00 - 28.04.2008 15:00

## [10.0.3.11] Device SNMP Availability (%)



— [10.0.3.11] Device SNMP Availability (%) (SLA-ON-SERVER3)

27.04.2008 14:00 - 28.04.2008 15:00

## 20 [10.0.3.11] Device SNMP Availability (%)

|             |      | 75> | 90> |             |      | 75> | 90> |
|-------------|------|-----|-----|-------------|------|-----|-----|
| 00:00-00:20 | 100  | 100 | 100 | 06:00-06:20 | 100  | 100 | 100 |
| 00:20-00:40 | 100  | 100 | 100 | 06:20-06:40 | 100  | 100 | 100 |
| 00:40-01:00 | 100  | 100 | 100 | 06:40-07:00 | 100  | 100 | 100 |
| 01:00-01:20 | 98,3 | 100 | 100 | 07:00-07:20 | 100  | 100 | 100 |
| 01:20-01:40 | 100  | 100 | 100 | 07:20-07:40 | 100  | 100 | 100 |
| 01:40-02:00 | 100  | 100 | 100 | 07:40-08:00 | 100  | 100 | 100 |
| 02:00-02:20 | 100  | 100 | 100 | 08:00-08:20 | 100  | 100 | 100 |
| 02:20-02:40 | 100  | 100 | 100 | 08:20-08:40 | 100  | 100 | 100 |
| 02:40-03:00 | 100  | 100 | 100 | 08:40-09:00 | 100  | 100 | 100 |
| 03:00-03:20 | 100  | 100 | 100 | 09:00-09:20 | 100  | 100 | 100 |
| 03:20-03:40 | 100  | 100 | 100 | 09:20-09:40 | 100  | 100 | 100 |
| 03:40-04:00 | 100  | 100 | 100 | 09:40-10:00 | 100  | 100 | 100 |
| 04:00-04:20 | 100  | 100 | 100 | 10:00-10:20 | 100  | 100 | 100 |
| 04:20-04:40 | 100  | 100 | 100 | 10:20-10:40 | 100  | 100 | 100 |
| 04:40-05:00 | 100  | 100 | 100 | 10:40-11:00 | 100  | 100 | 100 |
| 05:00-05:20 | 100  | 100 | 100 | 11:00-11:20 | 97,5 | 100 | 100 |
| 05:20-05:40 | 100  | 100 | 100 | 11:20-11:40 | 100  | 100 | 100 |
| 05:40-06:00 | 100  | 100 | 100 | 11:40-12:00 | 100  | 100 | 100 |

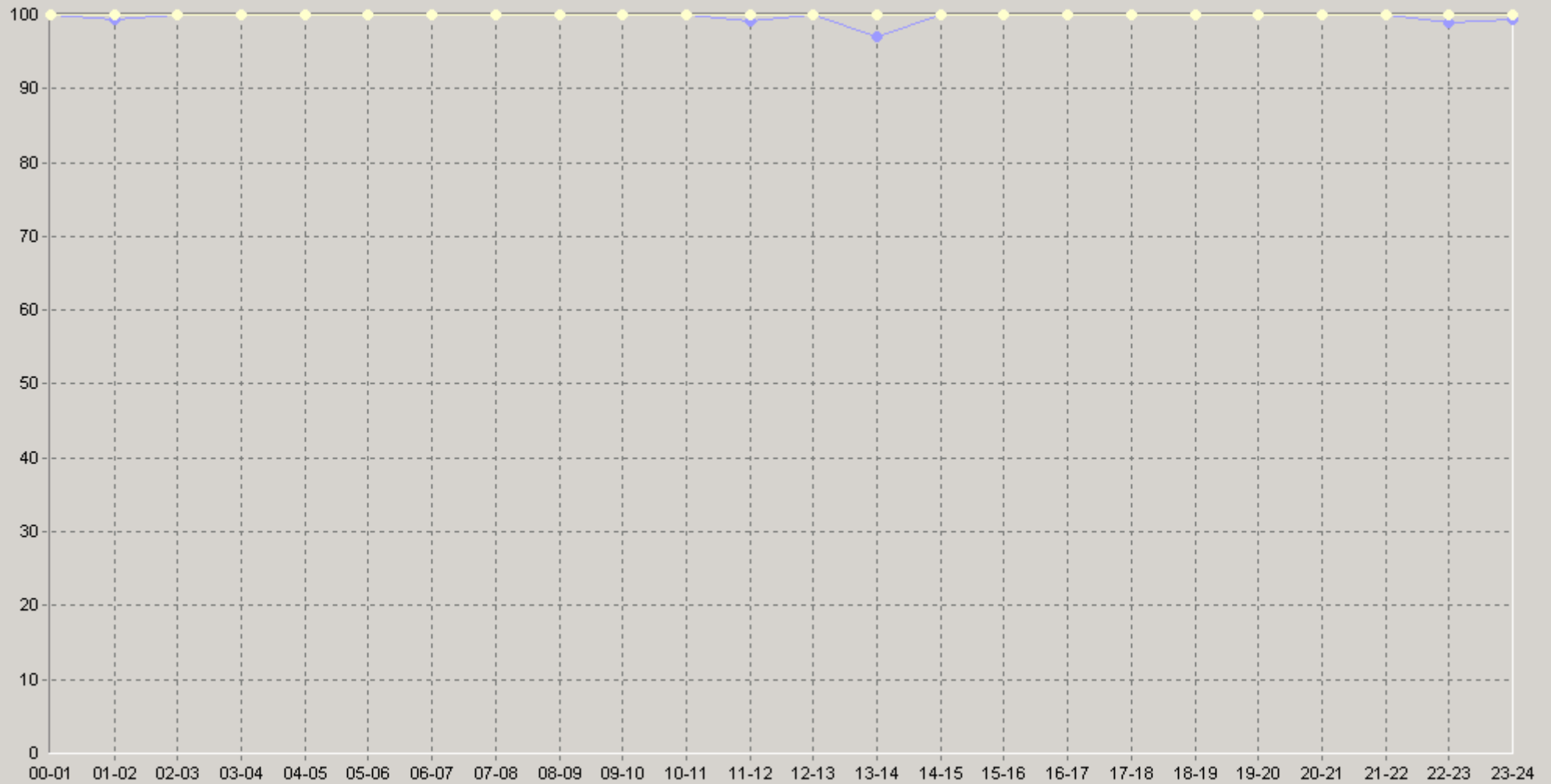
27.04.2008 14:00 - 28.04.2008 15:00

## 20 [10.0.3.11] Device SNMP Availability (%)

|             |      | 75> | 90>  |             |      | 75> | 90> |
|-------------|------|-----|------|-------------|------|-----|-----|
| 12:00-12:20 | 100  | 100 | 100  | 18:00-18:20 | 100  | 100 | 100 |
| 12:20-12:40 | 100  | 100 | 100  | 18:20-18:40 | 100  | 100 | 100 |
| 12:40-13:00 | 100  | 100 | 100  | 18:40-19:00 | 100  | 100 | 100 |
| 13:00-13:20 | 100  | 100 | 100  | 19:00-19:20 | 100  | 100 | 100 |
| 13:20-13:40 | 98,3 | 100 | 100  | 19:20-19:40 | 100  | 100 | 100 |
| 13:40-14:00 | 92,5 | 100 | 66,7 | 19:40-20:00 | 100  | 100 | 100 |
| 14:00-14:20 | 100  | 100 | 100  | 20:00-20:20 | 100  | 100 | 100 |
| 14:20-14:40 | 100  | 100 | 100  | 20:20-20:40 | 100  | 100 | 100 |
| 14:40-15:00 | 100  | 100 | 100  | 20:40-21:00 | 100  | 100 | 100 |
| 15:00-15:20 | 100  | 100 | 100  | 21:00-21:20 | 100  | 100 | 100 |
| 15:20-15:40 | 100  | 100 | 100  | 21:20-21:40 | 100  | 100 | 100 |
| 15:40-16:00 | 100  | 100 | 100  | 21:40-22:00 | 100  | 100 | 100 |
| 16:00-16:20 | 100  | 100 | 100  | 22:00-22:20 | 96,7 | 100 | 100 |
| 16:20-16:40 | 100  | 100 | 100  | 22:20-22:40 | 100  | 100 | 100 |
| 16:40-17:00 | 100  | 100 | 100  | 22:40-23:00 | 100  | 100 | 100 |
| 17:00-17:20 | 100  | 100 | 100  | 23:00-23:20 | 100  | 100 | 100 |
| 17:20-17:40 | 100  | 100 | 100  | 23:20-23:40 | 98,3 | 100 | 100 |
| 17:40-18:00 | 100  | 100 | 100  | 23:40-00:00 | 100  | 100 | 100 |

27.04.2008 14:00 - 28.04.2008 15:00

## 60 [10.0.3.11] Device SNMP Availability (%)



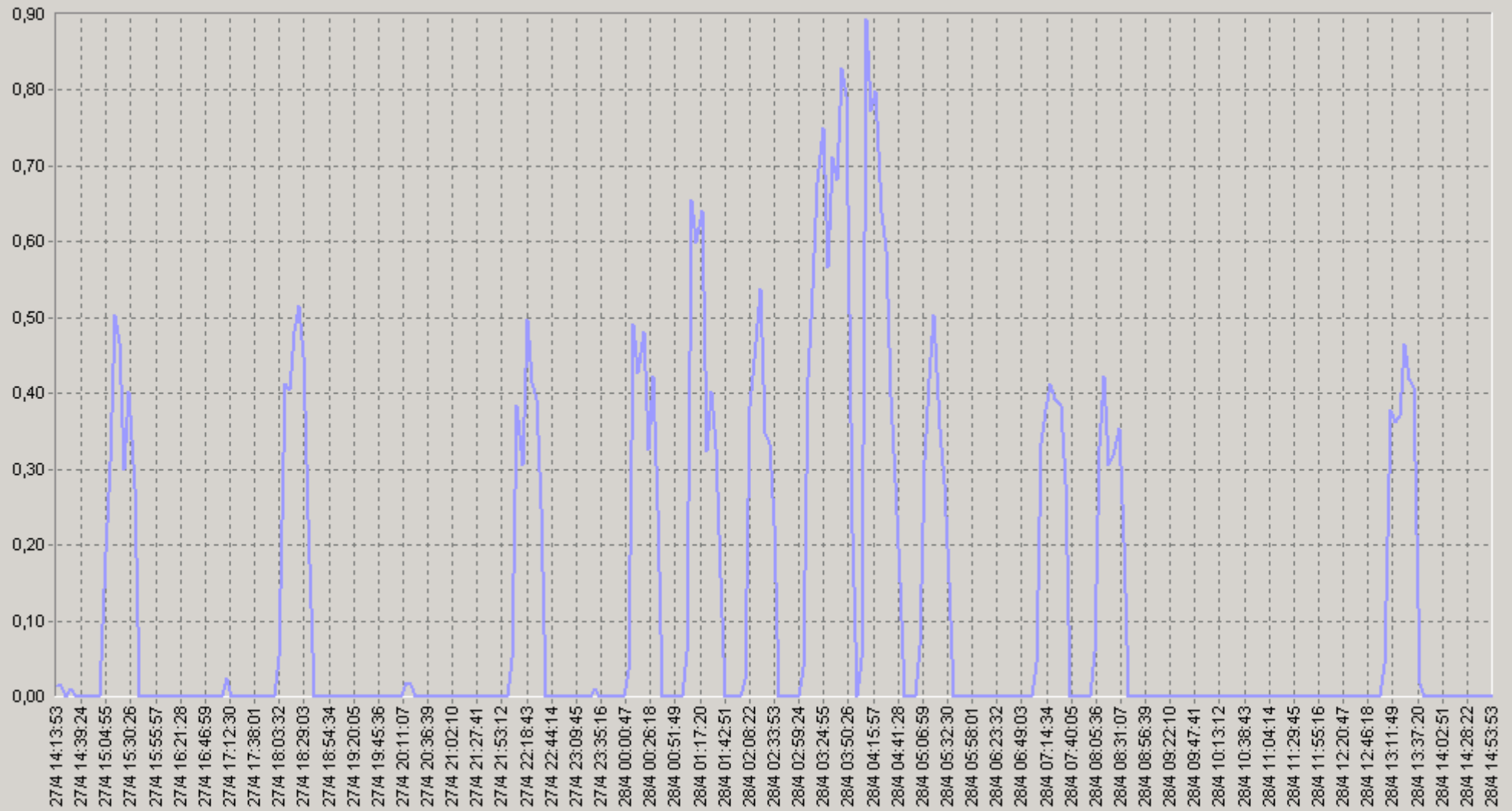
◆ [BaseLine Avg] [10.0.3.11] Device SNMP Availability (%) (60) (SLA-ON-SERVER3)

◆ [BaseLine Percnt75 (>)] [10.0.3.11] Device SNMP Availability (%) (60) (SLA-ON-SERVER3)

◆ [BaseLine Percnt90 (>)] [10.0.3.11] Device SNMP Availability (%) (60) (SLA-ON-SERVER3)

27.04.2008 14:00 - 28.04.2008 15:00

[10.0.3.11] Maximum Port Broadcast Packets (%)



— [10.0.3.11] Maximum Port Broadcast Packets (%)(SLA-ON-SERVER3)

27.04.2008 14:00 - 28.04.2008 15:00

## 20 [10.0.3.11] Maximum Port Broadcast Packets (%)

|             |      | 75<  | 90<  |             |      | 75<  | 90<  |
|-------------|------|------|------|-------------|------|------|------|
| 00:00-00:20 | 0,31 | 0,45 | 0,49 | 06:00-06:20 | 0    | 0    | 0    |
| 00:20-00:40 | 0,3  | 0,42 | 0,52 | 06:20-06:40 | 0    | 0    | 0    |
| 00:40-01:00 | 0    | 0    | 0    | 06:40-07:00 | 0    | 0    | 0    |
| 01:00-01:20 | 0,42 | 0,69 | 0,81 | 07:00-07:20 | 0,26 | 0,4  | 0,46 |
| 01:20-01:40 | 0,37 | 0,42 | 0,58 | 07:20-07:40 | 0,3  | 0,41 | 0,45 |
| 01:40-02:00 | 0    | 0    | 0    | 07:40-08:00 | 0    | 0    | 0    |
| 02:00-02:20 | 0,3  | 0,44 | 0,51 | 08:00-08:20 | 0,24 | 0,38 | 0,39 |
| 02:20-02:40 | 0,27 | 0,41 | 0,43 | 08:20-08:40 | 0,26 | 0,35 | 0,44 |
| 02:40-03:00 | 0    | 0    | 0    | 08:40-09:00 | 0    | 0    | 0    |
| 03:00-03:20 | 0,34 | 0,6  | 0,63 | 09:00-09:20 | 0    | 0    | 0    |
| 03:20-03:40 | 0,7  | 0,82 | 0,9  | 09:20-09:40 | 0    | 0    | 0    |
| 03:40-04:00 | 0,51 | 0,88 | 1,02 | 09:40-10:00 | 0    | 0    | 0    |
| 04:00-04:20 | 0,53 | 0,84 | 0,96 | 10:00-10:20 | 0    | 0    | 0    |
| 04:20-04:40 | 0,54 | 0,6  | 0,8  | 10:20-10:40 | 0    | 0    | 0    |
| 04:40-05:00 | 0,07 | 0    | 0,35 | 10:40-11:00 | 0    | 0    | 0    |
| 05:00-05:20 | 0,29 | 0,36 | 0,56 | 11:00-11:20 | 0    | 0    | 0    |
| 05:20-05:40 | 0,23 | 0,36 | 0,39 | 11:20-11:40 | 0    | 0    | 0    |
| 05:40-06:00 | 0    | 0    | 0    | 11:40-12:00 | 0    | 0    | 0    |

27.04.2008 14:00 - 28.04.2008 15:00

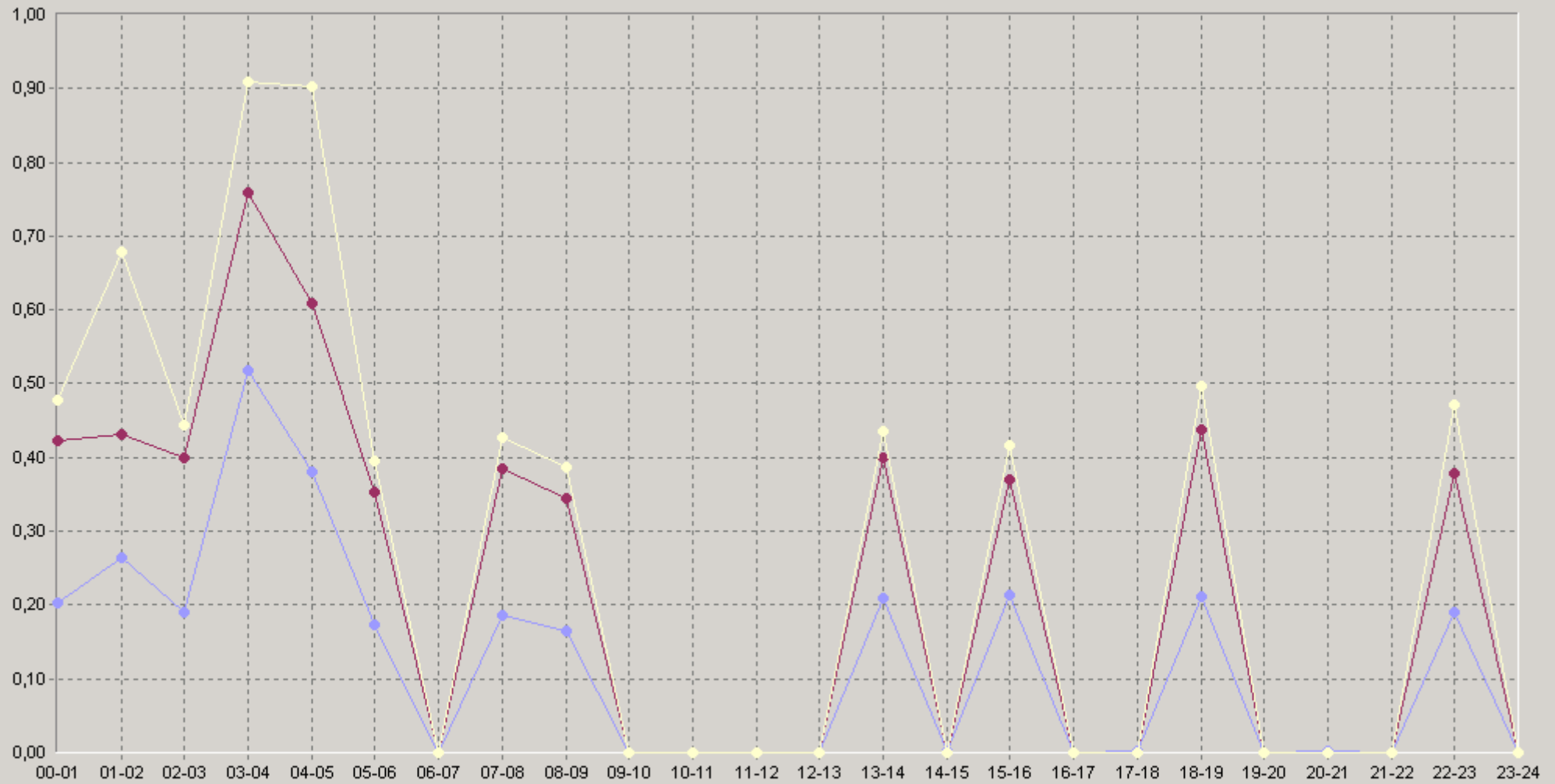
## 20 [10.0.3.11] Maximum Port Broadcast Packets (%)

|             |      | 75<  | 90<  |             |      | 75<  | 90<  |
|-------------|------|------|------|-------------|------|------|------|
| 12:00-12:20 | 0    | 0    | 0    | 18:00-18:20 | 0,28 | 0,44 | 0,5  |
| 12:20-12:40 | 0    | 0    | 0    | 18:20-18:40 | 0,36 | 0,45 | 0,57 |
| 12:40-13:00 | 0    | 0    | 0    | 18:40-19:00 | 0    | 0    | 0    |
| 13:00-13:20 | 0,25 | 0,4  | 0,41 | 19:00-19:20 | 0    | 0    | 0    |
| 13:20-13:40 | 0,36 | 0,43 | 0,48 | 19:20-19:40 | 0    | 0    | 0    |
| 13:40-14:00 | 0    | 0    | 0    | 19:40-20:00 | 0    | 0    | 0    |
| 14:00-14:20 | 0    | 0    | 0    | 20:00-20:20 | 0,01 | 0    | 0,03 |
| 14:20-14:40 | 0    | 0    | 0    | 20:20-20:40 | 0    | 0    | 0    |
| 14:40-15:00 | 0    | 0    | 0    | 20:40-21:00 | 0    | 0    | 0    |
| 15:00-15:20 | 0,39 | 0,4  | 0,62 | 21:00-21:20 | 0    | 0    | 0    |
| 15:20-15:40 | 0,3  | 0,4  | 0,44 | 21:20-21:40 | 0    | 0    | 0    |
| 15:40-16:00 | 0    | 0    | 0    | 21:40-22:00 | 0    | 0    | 0    |
| 16:00-16:20 | 0    | 0    | 0    | 22:00-22:20 | 0,26 | 0,37 | 0,5  |
| 16:20-16:40 | 0    | 0    | 0    | 22:20-22:40 | 0,31 | 0,42 | 0,48 |
| 16:40-17:00 | 0    | 0    | 0    | 22:40-23:00 | 0    | 0    | 0    |
| 17:00-17:20 | 0,01 | 0    | 0    | 23:00-23:20 | 0    | 0    | 0    |
| 17:20-17:40 | 0    | 0    | 0    | 23:20-23:40 | 0    | 0    | 0    |
| 17:40-18:00 | 0    | 0    | 0    | 23:40-00:00 | 0    | 0    | 0    |



27.04.2008 14:00 - 28.04.2008 15:00

## 60 [10.0.3.11] Maximum Port Broadcast Packets (%)



◆ [BaseLine Avg] [10.0.3.11] Maximum Port Broadcast Packets (%) (60) (SLA-ON-SERVER3)

◆ [BaseLine Percnt75 (&lt;=)] [10.0.3.11] Maximum Port Broadcast Packets (%) (60) (SLA-ON-SERVER3)

◆ [BaseLine Percnt90 (&lt;=)] [10.0.3.11] Maximum Port Broadcast Packets (%) (60) (SLA-ON-SERVER3)