

25.04.2008 17:20 - 27.04.2008 13:20



	IP-		Cisco IP SLA		G.711u		
	■	■	■	■	■	■	
[10.0.3.252->62.61.7.2] G.711 Delay (usec)	<=225 000 99,3%	>225 000 0,19%	>250 000 0,23%	>310 000 0,08%	>380 000 0,19%	2637	
[10.0.3.252->62.61.7.2] G.711 PacketLoss (%)	<=1 54%	>1 10%	>2 6,9%	>3 8,53%	>5 20,6%	2637	
[10.0.3.252->62.61.7.2] G.711 Jitter (usec)	<=50 000 32,2%	>50 000 31,1%	>60 000 27,6%	>80 000 5,65%	>100 000 3,38%	2637	
[10.0.3.252->62.61.7.2] G.711 SAA NumRTT's	>=95 4,21%	<95 13,7%	<85 15,7%	<70 20,3%	<50 46,1%	2637	
	IP- ()	0,38%	→→ 2,65%	→→ 11,6%	34,2%	2637	

(2)

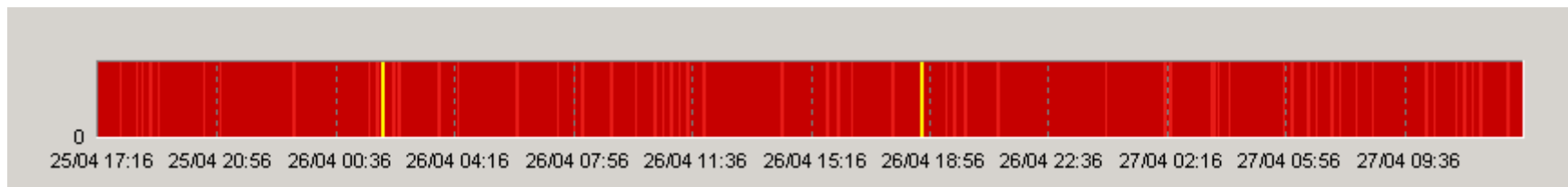
ProLAN

ProLAN.

PROLAN,

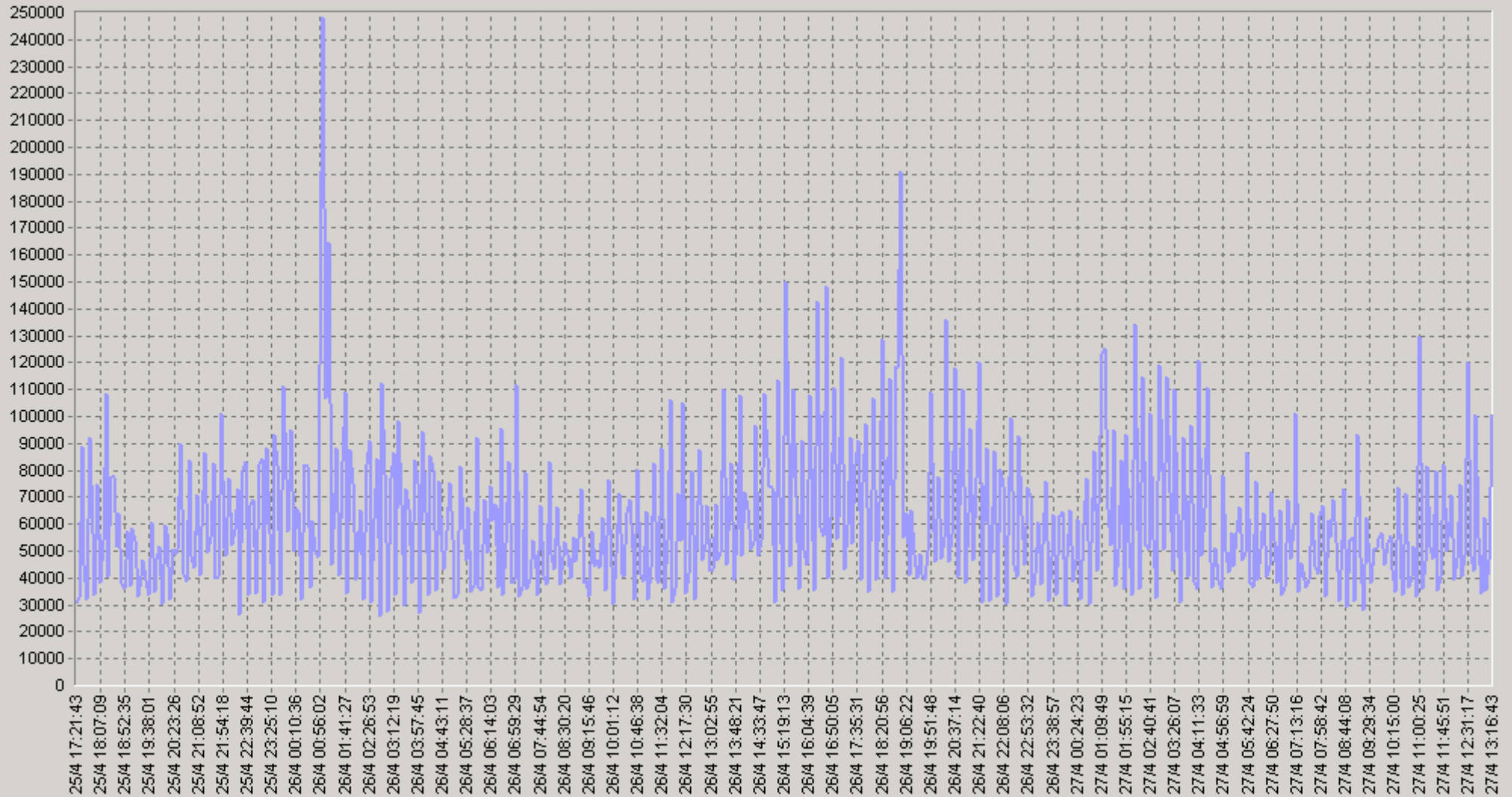
PROLAN
PARTNER@PROLAN.RU

« »



25.04.2008 17:20 - 27.04.2008 13:20

[10.0.3.252->62.61.7.2] G.711 Delay (usec)



— [10.0.3.252->62.61.7.2] G.711 Delay (usec)(SLA-ON-SERVER3)

25.04.2008 17:20 - 27.04.2008 13:20

20 [10.0.3.252->62.61.7.2] G.711 Delay (usec)

		75<	90<			75<	90<
00:00-00:20	56 847	76 534	108 535	06:00-06:20	55 229	67 617	97 899
00:20-00:40	54 733	65 108	118 404	06:20-06:40	55 371	55 600	105 016
00:40-01:00	82 054	92 062	141 477	06:40-07:00	51 986	65 152	94 250
01:00-01:20	113 195	162 354	269 571	07:00-07:20	63 761	84 197	107 589
01:20-01:40	66 998	97 123	109 400	07:20-07:40	41 317	47 943	56 100
01:40-02:00	68 957	86 681	137 943	07:40-08:00	49 022	59 600	81 091
02:00-02:20	58 045	64 921	97 565	08:00-08:20	58 997	80 143	95 237
02:20-02:40	65 937	89 125	114 580	08:20-08:40	47 286	55 400	77 284
02:40-03:00	75 121	108 512	142 522	08:40-09:00	50 523	67 552	90 673
03:00-03:20	66 981	94 681	110 687	09:00-09:20	47 956	50 171	87 462
03:20-03:40	65 338	95 494	107 753	09:20-09:40	50 215	57 026	81 415
03:40-04:00	68 231	88 670	116 042	09:40-10:00	54 258	68 635	83 250
04:00-04:20	57 434	64 741	117 193	10:00-10:20	47 426	59 924	79 011
04:20-04:40	66 892	94 319	130 435	10:20-10:40	55 667	71 985	85 936
04:40-05:00	54 065	70 724	100 770	10:40-11:00	44 728	49 159	76 855
05:00-05:20	48 819	56 254	96 322	11:00-11:20	63 971	80 200	126 376
05:20-05:40	53 734	64 315	97 133	11:20-11:40	52 112	59 483	85 017
05:40-06:00	55 366	59 946	107 141	11:40-12:00	57 827	74 039	105 937

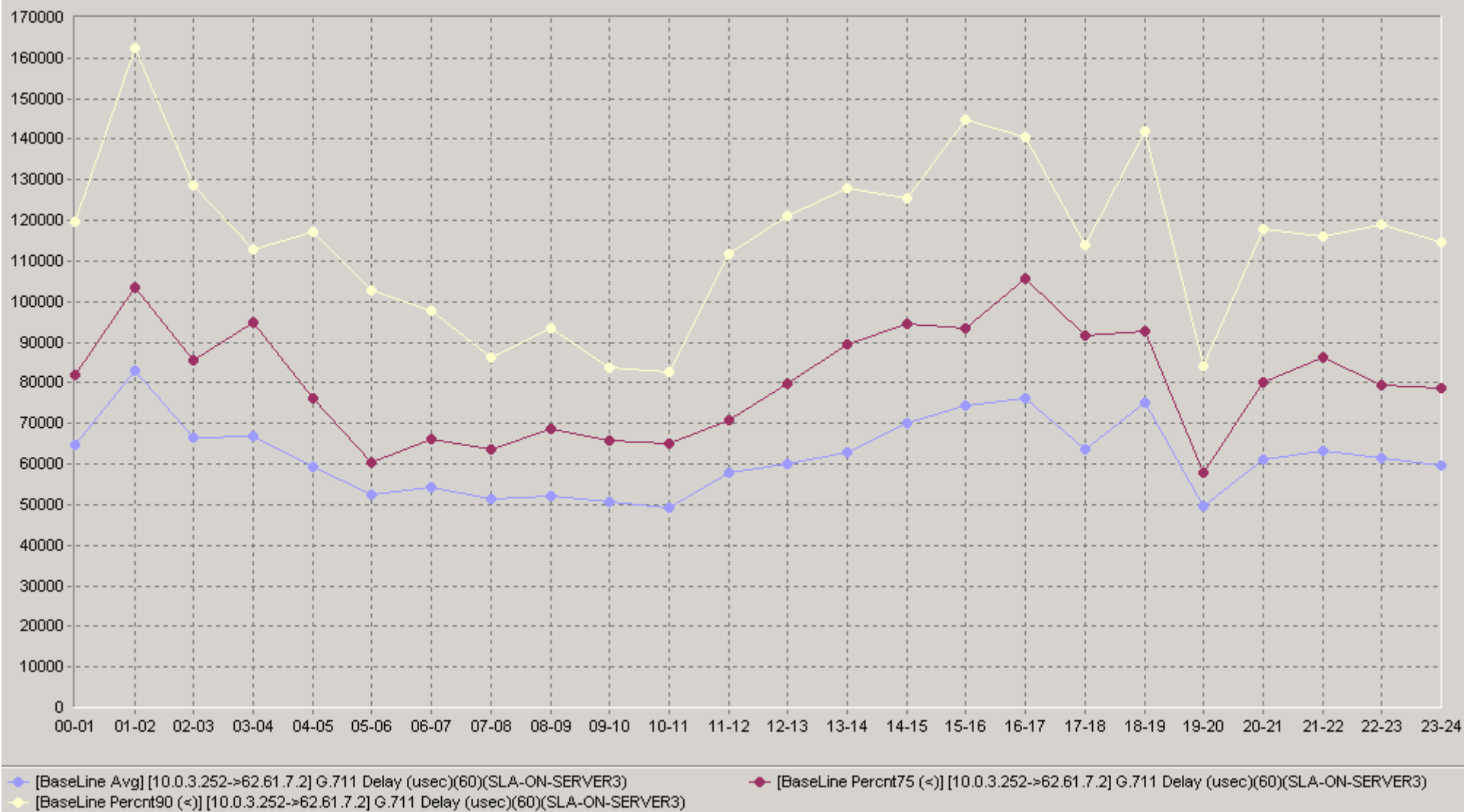
25.04.2008 17:20 - 27.04.2008 13:20

20 [10.0.3.252->62.61.7.2] G.711 Delay (usec)

		75<	90<			75<	90<
12:00-12:20	61 517	78 519	114 662	18:00-18:20	70 477	94 364	126 586
12:20-12:40	57 410	79 773	121 220	18:20-18:40	72 169	86 388	160 308
12:40-13:00	61 129	81 549	114 289	18:40-19:00	82 512	77 817	138 913
13:00-13:20	55 783	67 443	93 818	19:00-19:20	49 865	53 447	84 025
13:20-13:40	68 778	93 429	131 189	19:20-19:40	43 141	53 190	69 929
13:40-14:00	71 810	109 872	130 513	19:40-20:00	55 386	62 708	77 480
14:00-14:20	59 263	76 811	94 367	20:00-20:20	51 124	63 450	94 121
14:20-14:40	62 914	67 573	121 406	20:20-20:40	74 772	104 193	125 833
14:40-15:00	87 902	110 934	147 494	20:40-21:00	57 599	72 213	113 132
15:00-15:20	62 615	81 818	135 729	21:00-21:20	63 412	74 183	100 778
15:20-15:40	98 819	144 434	183 725	21:20-21:40	70 614	93 913	117 037
15:40-16:00	61 987	77 679	93 368	21:40-22:00	56 161	79 016	113 389
16:00-16:20	60 651	88 574	107 000	22:00-22:20	60 526	81 754	116 033
16:20-16:40	101 533	128 333	167 847	22:20-22:40	66 716	79 438	131 255
16:40-17:00	66 726	95 826	125 056	22:40-23:00	56 974	66 054	107 365
17:00-17:20	72 312	90 396	108 417	23:00-23:20	58 852	78 770	114 696
17:20-17:40	65 110	92 163	114 476	23:20-23:40	57 517	72 101	108 407
17:40-18:00	58 188	87 363	110 304	23:40-00:00	62 683	82 798	115 793

25.04.2008 17:20 - 27.04.2008 13:20

60 [10.0.3.252->62.61.7.2] G.711 Delay (usec)





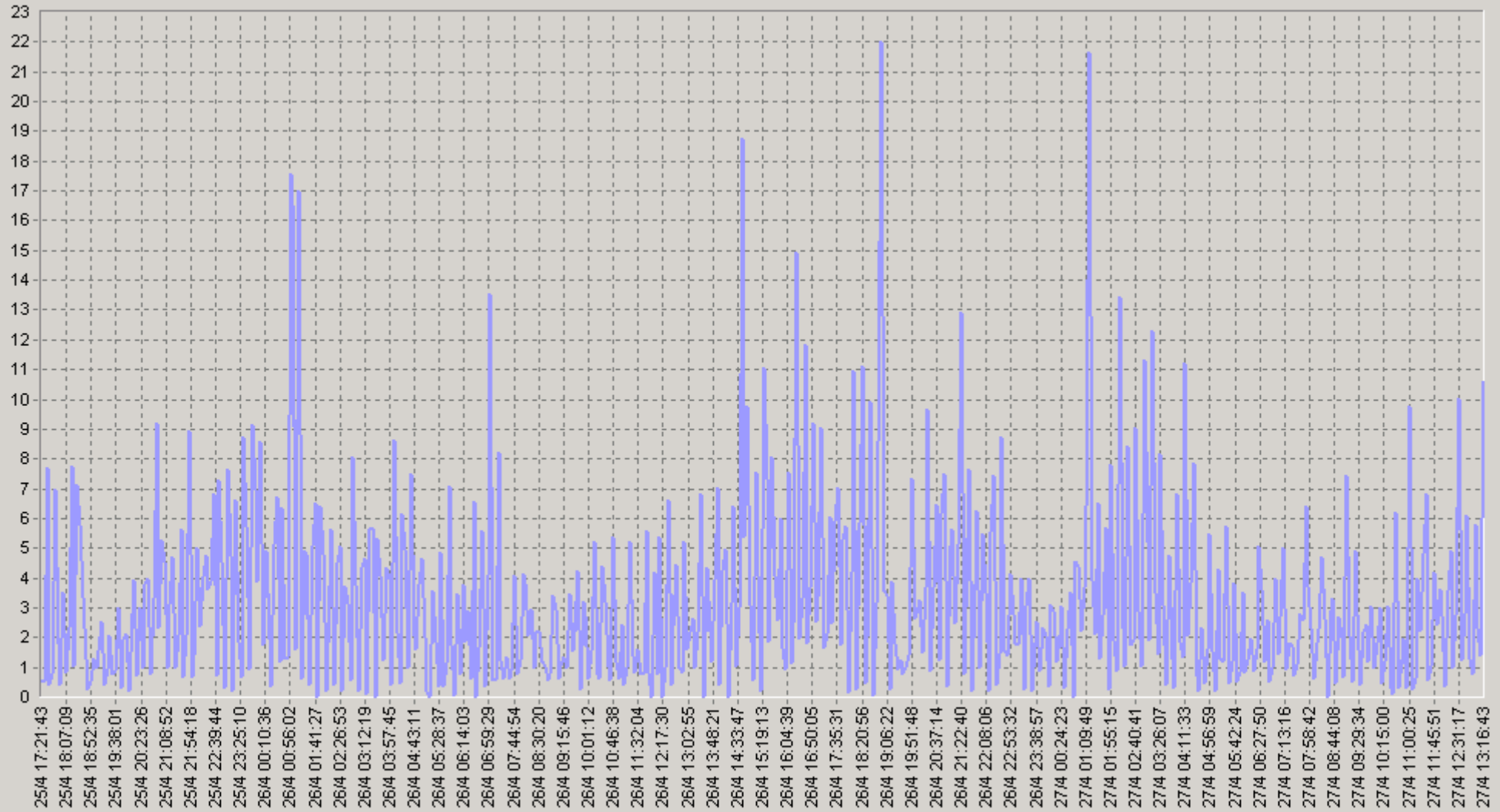
IP-

Cisco IP SLA

G.711u

25.04.2008 17:20 - 27.04.2008 13:20

[100.3.252->62.61.7.2] G.711 Packet Loss (%)



[100.3.252->62.61.7.2] G.711 Packet Loss (%) (SLA-ON-SERVER3)

25.04.2008 17:20 - 27.04.2008 13:20

20 [10.0.3.252->62.61.7.2] G.711 Packet Loss (%)

		75<	90<			75<	90<
00:00-00:20	3,13	4	9	06:00-06:20	1,78	2	4
00:20-00:40	2,65	4	5	06:20-06:40	2,75	3	11
00:40-01:00	5,63	6	11	06:40-07:00	2,43	3	7
01:00-01:20	8,23	12	29	07:00-07:20	4,35	6	10
01:20-01:40	3,7	6	9	07:20-07:40	1,1	1	3
01:40-02:00	4	6	12	07:40-08:00	2,78	4	6
02:00-02:20	3,25	3	8	08:00-08:20	2,65	3	9
02:20-02:40	3,55	5	8	08:20-08:40	2	3	6
02:40-03:00	4,8	8	11	08:40-09:00	1,75	2	5
03:00-03:20	3,98	5	10	09:00-09:20	2,1	2	4
03:20-03:40	3,77	6	10	09:20-09:40	2,35	4	6
03:40-04:00	3,38	6	9	09:40-10:00	2,2	4	6
04:00-04:20	3,5	5	11	10:00-10:20	1,88	2	5
04:20-04:40	4,03	7	11	10:20-10:40	2,33	3	5
04:40-05:00	2,8	4	8	10:40-11:00	1,5	1	4
05:00-05:20	1,55	1	4	11:00-11:20	2,93	3	7
05:20-05:40	2,05	2	6	11:20-11:40	2,38	2	6
05:40-06:00	2,4	3	6	11:40-12:00	2,3	2	8

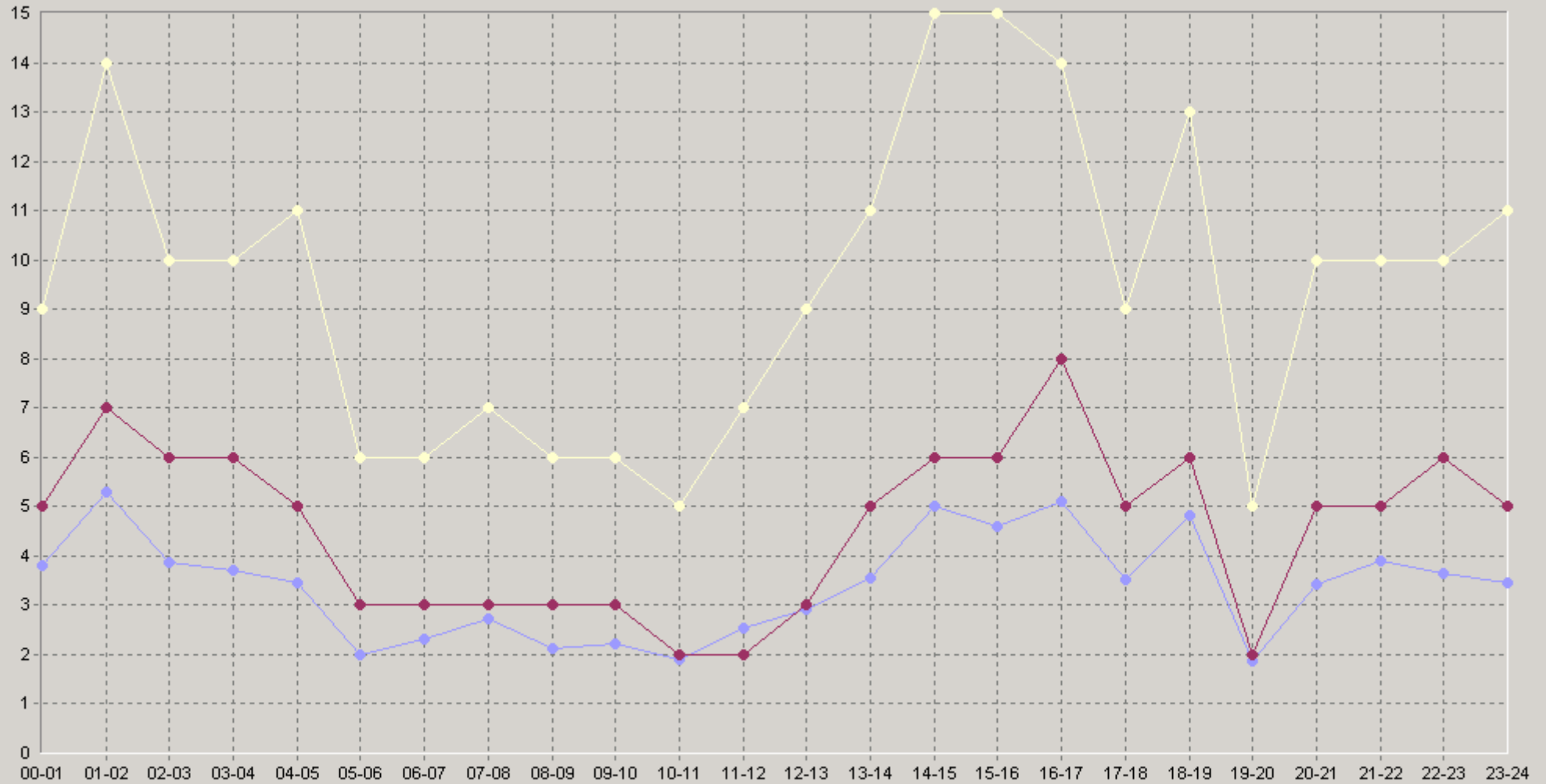
25.04.2008 17:20 - 27.04.2008 13:20

20 [10.0.3.252->62.61.7.2] G.711 Packet Loss (%)

		75<	90<			75<	90<
12:00-12:20	2,73	3	9	18:00-18:20	4,53	7	11
12:20-12:40	3,18	2	10	18:20-18:40	5,05	5	18
12:40-13:00	2,9	3	9	18:40-19:00	4,9	4	10
13:00-13:20	3,5	5	11	19:00-19:20	1,98	2	4
13:20-13:40	3,35	4	11	19:20-19:40	1,28	2	3
13:40-14:00	3,85	5	10	19:40-20:00	2,35	3	5
14:00-14:20	2,4	2	9	20:00-20:20	2,43	3	7
14:20-14:40	3,4	4	7	20:20-20:40	4,05	6	10
14:40-15:00	9,25	10	21	20:40-21:00	3,8	6	11
15:00-15:20	3,1	3	12	21:00-21:20	4,25	6	9
15:20-15:40	7,1	12	17	21:20-21:40	4,53	6	9
15:40-16:00	3,55	4	12	21:40-22:00	2,93	4	10
16:00-16:20	3,05	6	8	22:00-22:20	3,55	6	9
16:20-16:40	8	13	20	22:20-22:40	4,58	7	11
16:40-17:00	4,3	7	11	22:40-23:00	2,8	3	10
17:00-17:20	4,05	4	9	23:00-23:20	3,48	6	11
17:20-17:40	3,9	6	9	23:20-23:40	3,2	5	10
17:40-18:00	2,88	5	9	23:40-00:00	3,73	4	11

25.04.2008 17:20 - 27.04.2008 13:20

60 [10.0.3.252->62.61.7.2] G.711 Packet Loss (%)



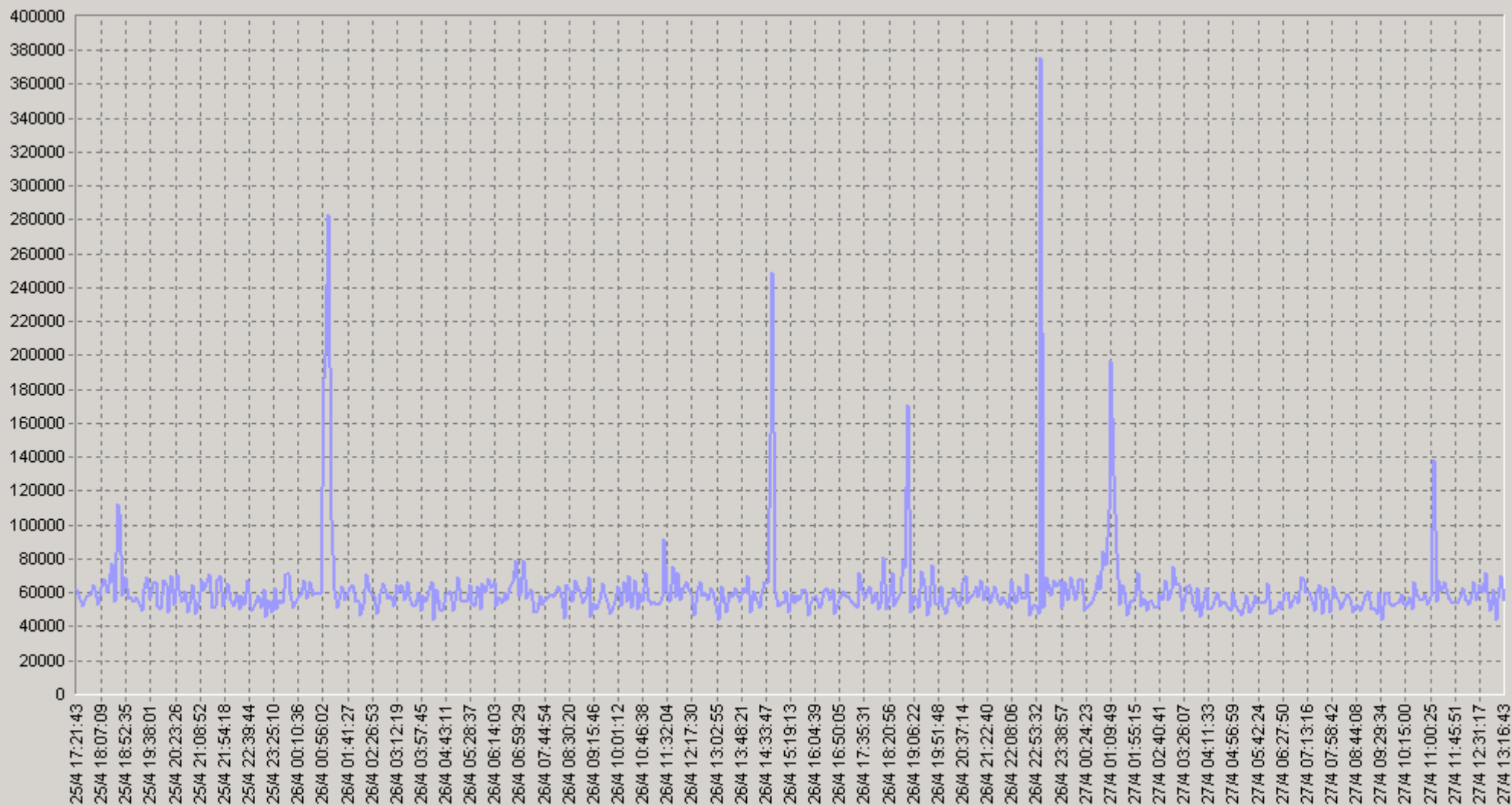
◆ [BaseLine Avg] [10.0.3.252->62.61.7.2] G.711 Packet Loss (%) (60) (SLA-ON-SERVER3)

◆ [BaseLine Percnt75 (<=)] [10.0.3.252->62.61.7.2] G.711 Packet Loss (%) (60) (SLA-ON-SERVER3)

◆ [BaseLine Percnt90 (<=)] [10.0.3.252->62.61.7.2] G.711 Packet Loss (%) (60) (SLA-ON-SERVER3)

25.04.2008 17:20 - 27.04.2008 13:20

[10.0.3.252->62.61.7.2] G.711 Jitter (usec)



— [10.0.3.252->62.61.7.2] G.711 Jitter (usec)(SLA-ON-SERVER3)

25.04.2008 17:20 - 27.04.2008 13:20

20 [10.0.3.252->62.61.7.2] G.711 Jitter (usec)

		75<	90<			75<	90<
00:00-00:20	60 375	65 200	79 357	06:00-06:20	57 565	63 000	73 133
00:20-00:40	56 691	64 167	70 962	06:20-06:40	56 384	64 556	69 444
00:40-01:00	85 118	86 448	150 625	06:40-07:00	60 818	67 393	79 000
01:00-01:20	141 182	186 667	277 667	07:00-07:20	64 178	67 813	81 154
01:20-01:40	60 169	66 741	78 692	07:20-07:40	56 064	66 905	73 867
01:40-02:00	56 849	64 900	77 200	07:40-08:00	55 202	61 524	73 000
02:00-02:20	57 003	61 462	69 656	08:00-08:20	58 697	69 273	74 880
02:20-02:40	54 543	60 800	67 083	08:20-08:40	55 259	61 250	72 294
02:40-03:00	60 297	68 226	79 880	08:40-09:00	56 880	61 000	70 786
03:00-03:20	63 243	68 778	80 357	09:00-09:20	56 077	67 273	75 800
03:20-03:40	59 065	64 000	80 083	09:20-09:40	55 906	58 189	74 000
03:40-04:00	53 480	60 000	65 320	09:40-10:00	53 181	57 500	66 815
04:00-04:20	57 875	62 100	78 000	10:00-10:20	56 968	63 133	75 000
04:20-04:40	53 504	57 633	70 353	10:20-10:40	58 959	64 185	80 000
04:40-05:00	55 197	64 727	70 895	10:40-11:00	58 568	65 600	74 667
05:00-05:20	55 138	58 048	75 941	11:00-11:20	66 474	59 355	76 063
05:20-05:40	55 180	61 714	67 040	11:20-11:40	63 702	65 000	85 364
05:40-06:00	57 355	59 815	73 000	11:40-12:00	60 094	63 933	80 913

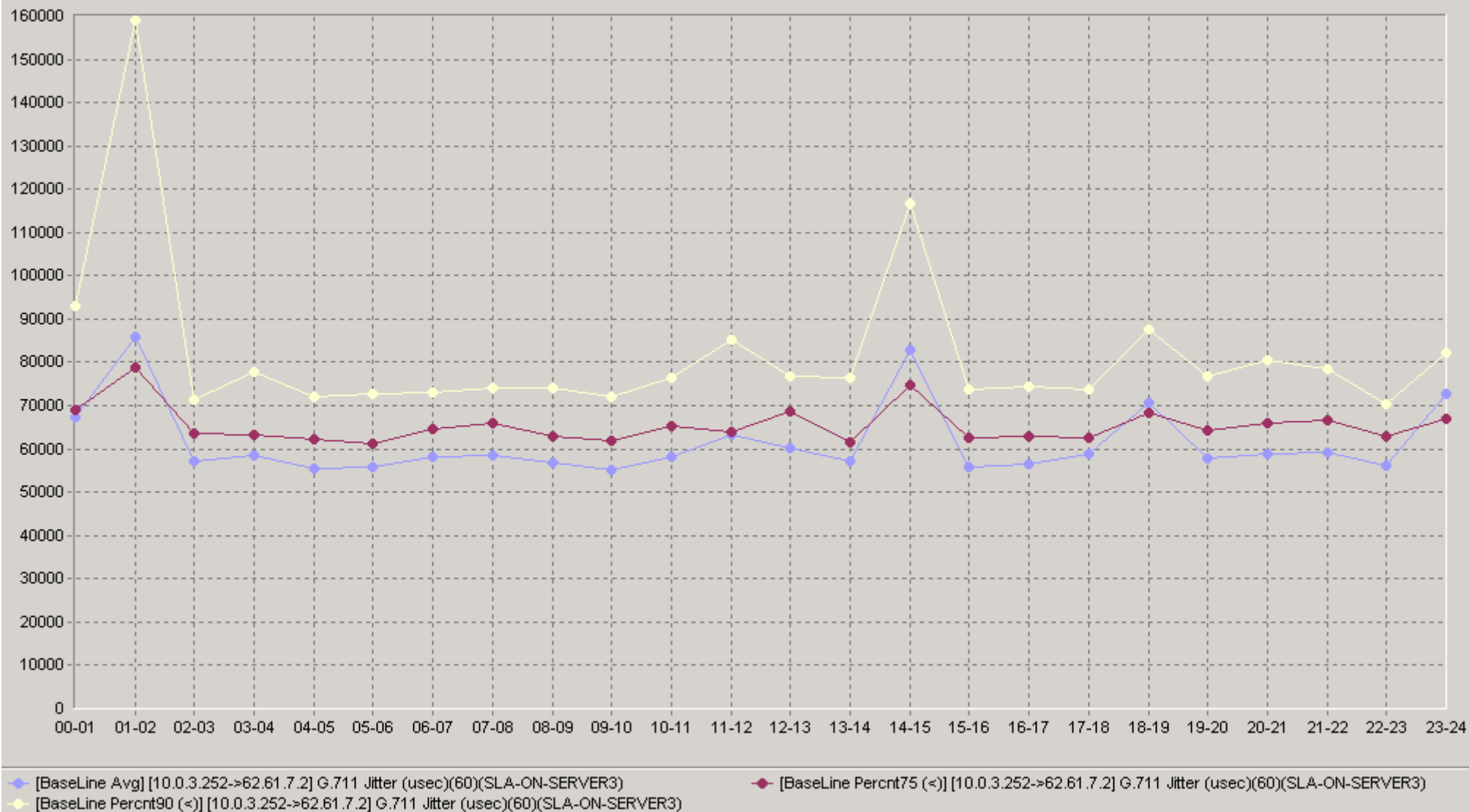
25.04.2008 17:20 - 27.04.2008 13:20

20 [10.0.3.252->62.61.7.2] G.711 Jitter (usec)

		75<	90<			75<	90<
12:00-12:20	60 758	68 944	73 529	18:00-18:20	59 710	62 586	77 857
12:20-12:40	60 413	66 600	76 586	18:20-18:40	74 773	70 077	84 700
12:40-13:00	59 597	69 550	77 500	18:40-19:00	77 889	68 182	93 955
13:00-13:20	55 951	59 920	76 353	19:00-19:20	54 892	62 037	69 688
13:20-13:40	57 074	62 857	67 846	19:20-19:40	58 740	64 333	78 789
13:40-14:00	59 331	67 065	79 214	19:40-20:00	60 037	59 455	101 182
14:00-14:20	58 760	62 000	78 846	20:00-20:20	58 112	65 909	86 333
14:20-14:40	60 599	68 800	80 211	20:20-20:40	59 854	66 000	70 704
14:40-15:00	128 892	124 333	166 000	20:40-21:00	59 050	63 273	79 100
15:00-15:20	54 354	63 300	68 280	21:00-21:20	59 706	66 545	77 848
15:20-15:40	56 844	61 741	68 400	21:20-21:40	59 612	61 529	82 000
15:40-16:00	55 749	59 848	73 889	21:40-22:00	58 223	67 200	77 133
16:00-16:20	54 459	57 857	72 800	22:00-22:20	57 481	66 885	68 208
16:20-16:40	60 347	67 846	74 320	22:20-22:40	59 953	66 067	74 375
16:40-17:00	55 155	61 038	64 308	22:40-23:00	51 461	56 063	65 571
17:00-17:20	56 075	62 154	73 250	23:00-23:20	96 385	67 545	81 444
17:20-17:40	58 253	62 667	74 636	23:20-23:40	59 328	63 897	77 636
17:40-18:00	60 460	62 621	71 333	23:40-00:00	61 981	67 000	88 524

25.04.2008 17:20 - 27.04.2008 13:20

60 [10.0.3.252->62.61.7.2] G.711 Jitter (usec)





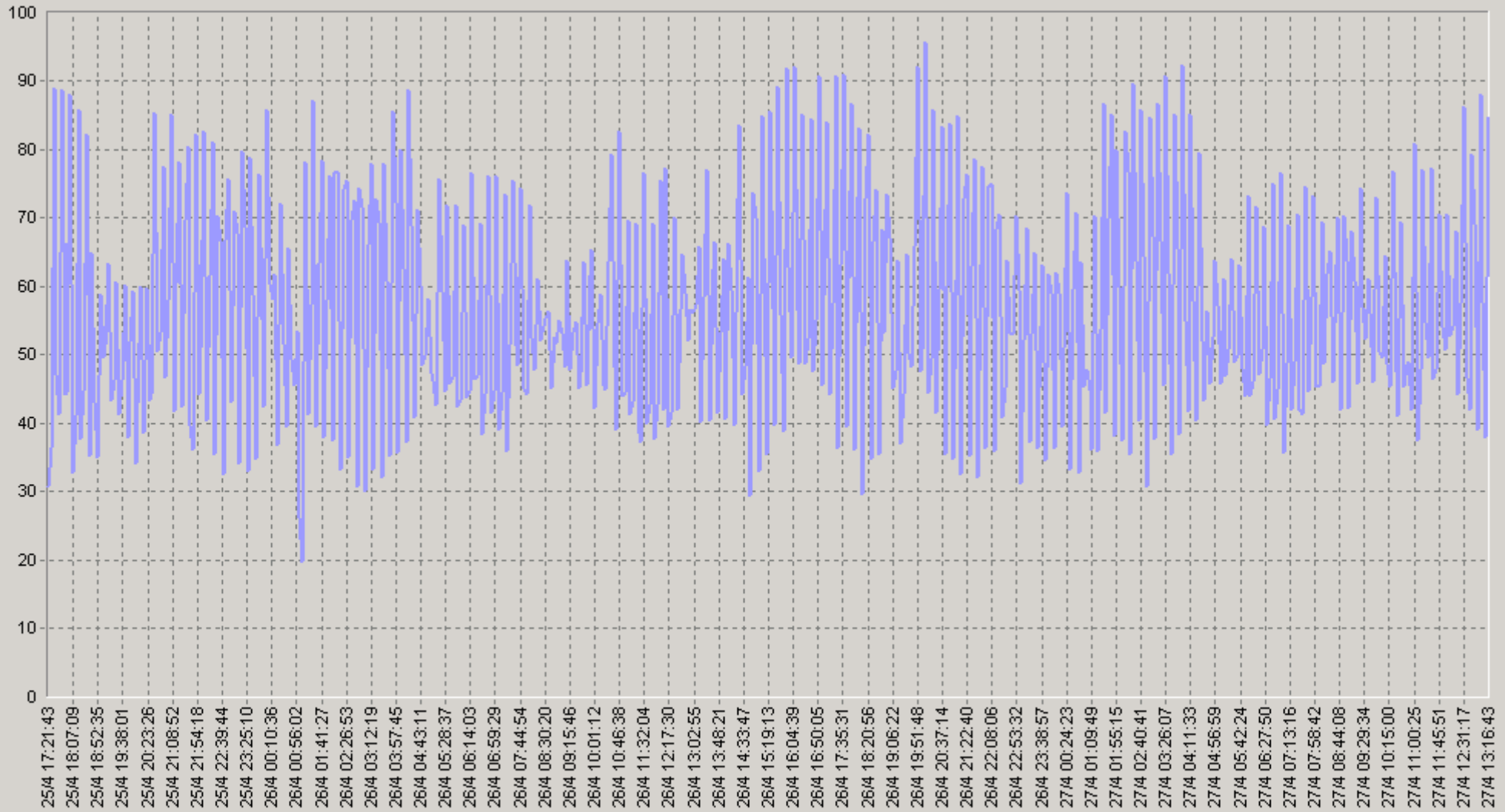
IP-

Cisco IP SLA

G.711u

25.04.2008 17:20 - 27.04.2008 13:20

[10.0.3.252->62.61.7.2] G.711 SAA NumRTT's



[10.0.3.252->62.61.7.2] G.711 SAA NumRTT's(SLA-ON-SERVER3)

25.04.2008 17:20 - 27.04.2008 13:20

20 [10.0.3.252->62.61.7.2] G.711 SAA NumRTT's

		75>	90>			75>	90>
00:00-00:20	57,3	36	32	06:00-06:20	55,6	43	33
00:20-00:40	54,4	38	30	06:20-06:40	51	38	32
00:40-01:00	53	36	33	06:40-07:00	55,3	40	31
01:00-01:20	46	27	18	07:00-07:20	53,7	36	31
01:20-01:40	58,4	36	29	07:20-07:40	52,1	38	29
01:40-02:00	65,8	45	27	07:40-08:00	57,6	42	34
02:00-02:20	59,4	38	31	08:00-08:20	55,9	38	34
02:20-02:40	61,6	35	29	08:20-08:40	56,9	42	36
02:40-03:00	63,6	39	30	08:40-09:00	55,7	38	30
03:00-03:20	57,9	34	29	09:00-09:20	53,8	38	32
03:20-03:40	61,4	34	29	09:20-09:40	56,2	41	32
03:40-04:00	67,4	37	30	09:40-10:00	56,6	40	36
04:00-04:20	56	35	28	10:00-10:20	51,6	38	33
04:20-04:40	60,7	37	32	10:20-10:40	59,2	41	29
04:40-05:00	55,3	43	34	10:40-11:00	49,4	37	33
05:00-05:20	52,1	39	34	11:00-11:20	58	39	30
05:20-05:40	54,7	37	33	11:20-11:40	52,7	39	29
05:40-06:00	54,2	36	34	11:40-12:00	52,6	36	32

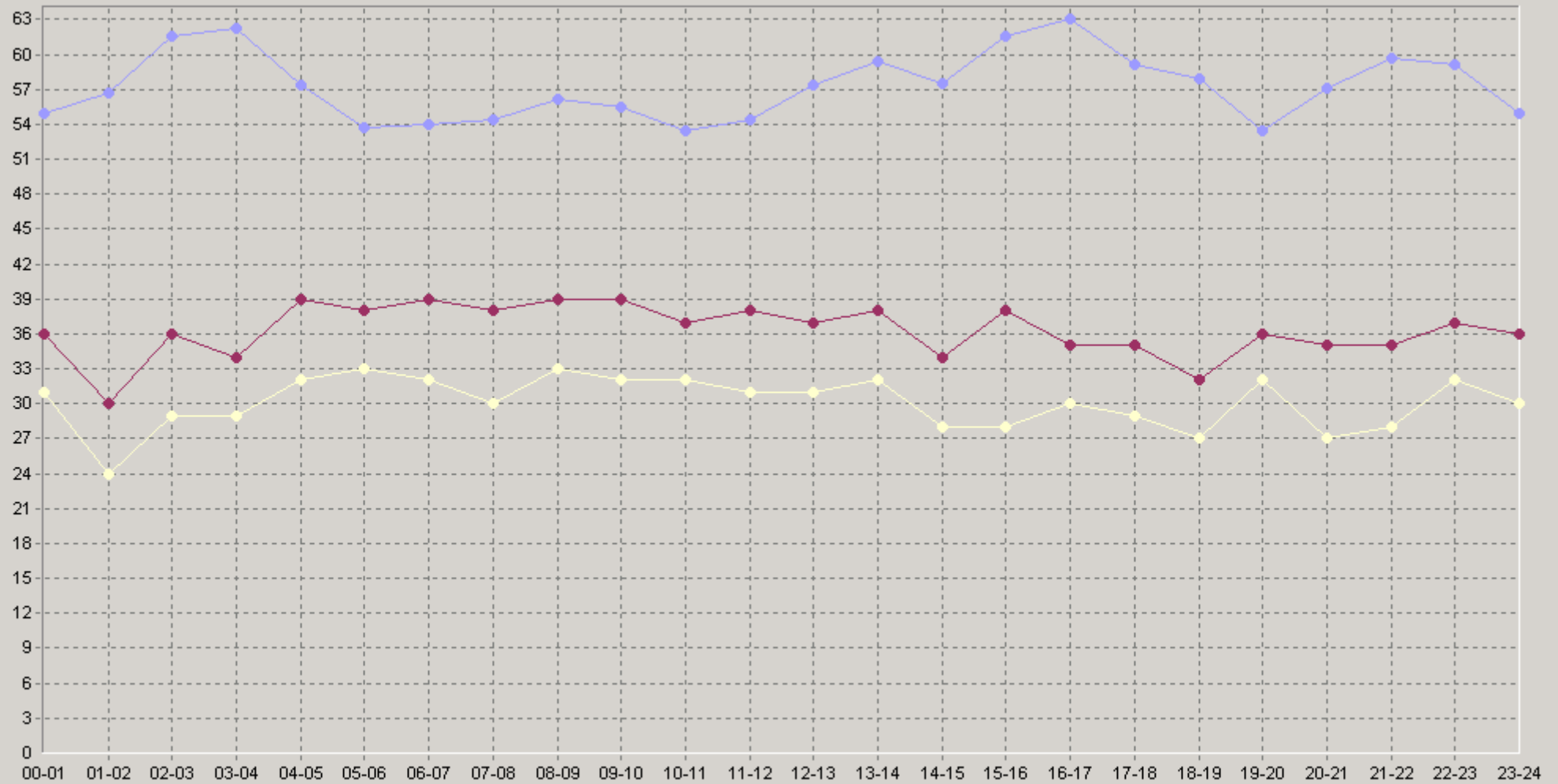
25.04.2008 17:20 - 27.04.2008 13:20

20 [10.0.3.252->62.61.7.2] G.711 SAA NumRTT's

		75>	90>			75>	90>
12:00-12:20	59	42	34	18:00-18:20	63,3	32	28
12:20-12:40	54,5	36	30	18:20-18:40	56,2	32	28
12:40-13:00	58,9	36	30	18:40-19:00	54,2	35	25
13:00-13:20	60,8	42	36	19:00-19:20	53,7	41	34
13:20-13:40	59,7	40	35	19:20-19:40	49,4	36	33
13:40-14:00	56,3	37	31	19:40-20:00	57,2	36	31
14:00-14:20	51,6	37	30	20:00-20:20	53,4	33	25
14:20-14:40	62,2	39	32	20:20-20:40	63,4	41	29
14:40-15:00	58,6	33	21	20:40-21:00	54,5	33	27
15:00-15:20	54,6	34	27	21:00-21:20	63,1	36	29
15:20-15:40	68	50	29	21:20-21:40	64,9	42	34
15:40-16:00	62,2	39	34	21:40-22:00	51,2	32	25
16:00-16:20	62,1	34	28	22:00-22:20	62,3	38	33
16:20-16:40	67,6	45	30	22:20-22:40	58	37	29
16:40-17:00	59,5	32	32	22:40-23:00	57	38	34
17:00-17:20	61,6	38	33	23:00-23:20	55,9	34	27
17:20-17:40	61,4	34	27	23:20-23:40	55,2	38	31
17:40-18:00	55,8	35	29	23:40-00:00	53,7	36	31

25.04.2008 17:20 - 27.04.2008 13:20

60 [10.0.3.252->62.61.7.2] G.711 SAA NumRTT's



◆ [BaseLine Avg] [10.0.3.252->62.61.7.2] G.711 SAA NumRTT's(60)(SLA-ON-SERVER3)
 ◆ [BaseLine Percnt90 (>=)] [10.0.3.252->62.61.7.2] G.711 SAA NumRTT's(60)(SLA-ON-SERVER3)

◆ [BaseLine Percnt75 (>=)] [10.0.3.252->62.61.7.2] G.711 SAA NumRTT's(60)(SLA-ON-SERVER3)