

27.04.2008 14:00 - 28.04.2008 15:00

LAN/WAN



AdvAvailabilityTestNode Availability: 62.61.7.3 (%)	>=99 100%	<99 0%	<96 0%	<94 0%	<90 0%	1467		
AdvAvailabilityTestNode Response Time: 62.61.7.3 (ms)	<=10 96,3%	>10 0,48%	>15 1,23%	>20 0,89%	>35 1,09%	1467		
	96,3%	→→	96,8%	→→	98%	→→	98,9%	1467

(2 )

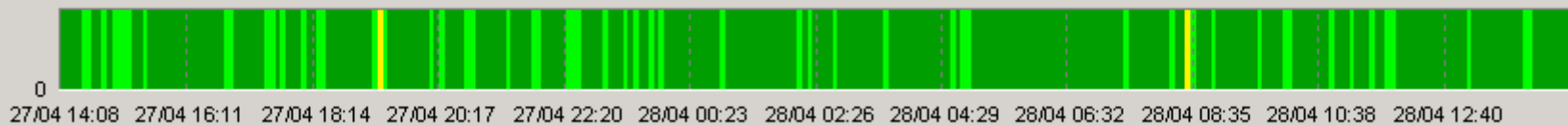
ProLAN

ProLAN.

PROLAN,

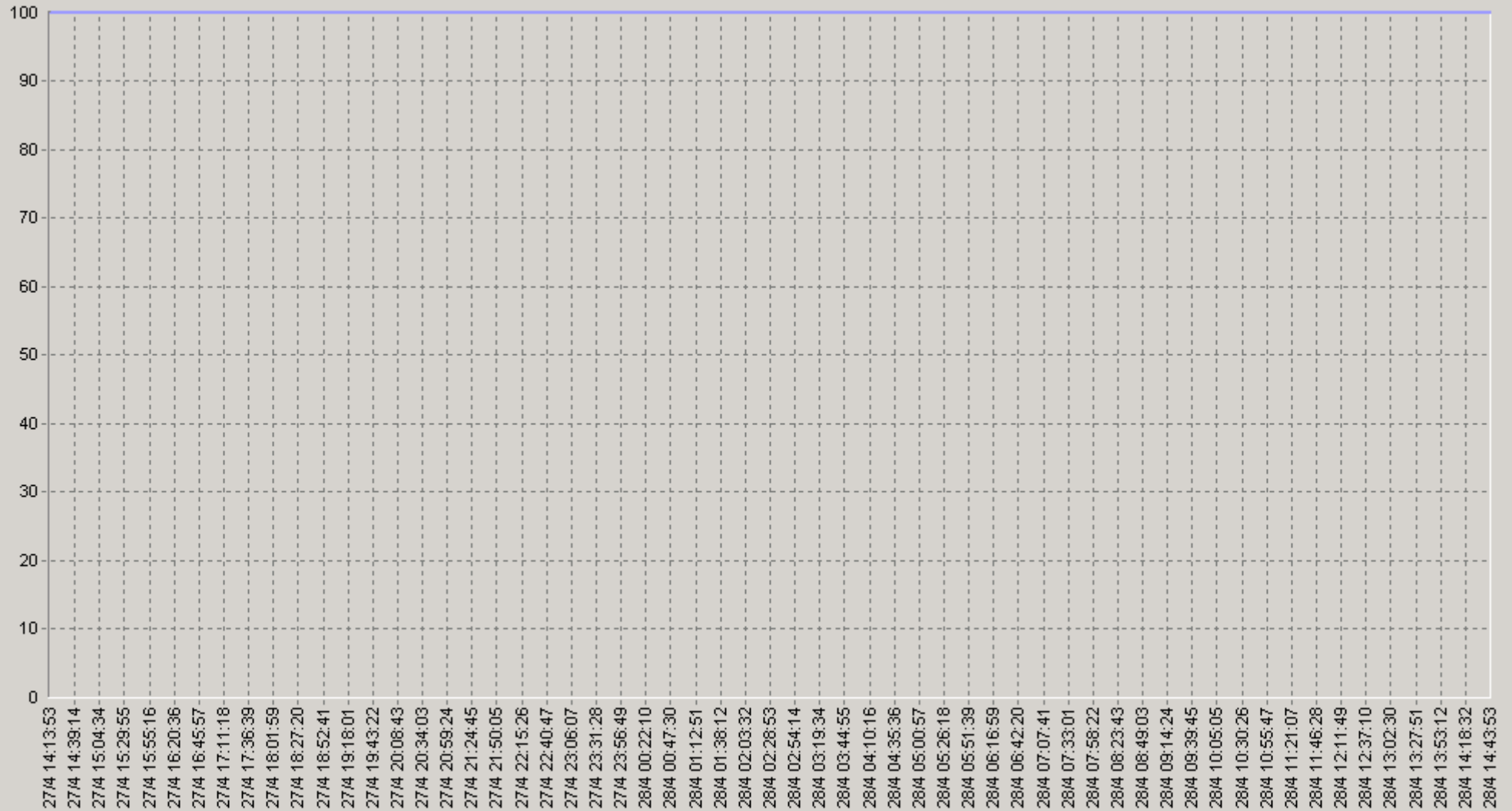
PROLAN  
PARTNER@PROLAN.RU

« »



27.04.2008 14:00 - 28.04.2008 15:00

AdvAvailabilityTest Node Availability: 62.61.7.3 (%)



AdvAvailabilityTest Node Availability: 62.61.7.3 (%) (SLA-ON-SERVER3)

27.04.2008 14:00 - 28.04.2008 15:00

## 2Q AdvAvailabilityTest Node Availability: 62.61.7.3 (%)

		75>	90>			75>	90>
00:00-00:20	100	100	100	06:00-06:20	100	100	100
00:20-00:40	100	100	100	06:20-06:40	100	100	100
00:40-01:00	100	100	100	06:40-07:00	100	100	100
01:00-01:20	100	100	100	07:00-07:20	100	100	100
01:20-01:40	100	100	100	07:20-07:40	100	100	100
01:40-02:00	100	100	100	07:40-08:00	100	100	100
02:00-02:20	100	100	100	08:00-08:20	100	100	100
02:20-02:40	100	100	100	08:20-08:40	100	100	100
02:40-03:00	100	100	100	08:40-09:00	100	100	100
03:00-03:20	100	100	100	09:00-09:20	100	100	100
03:20-03:40	100	100	100	09:20-09:40	100	100	100
03:40-04:00	100	100	100	09:40-10:00	100	100	100
04:00-04:20	100	100	100	10:00-10:20	100	100	100
04:20-04:40	100	100	100	10:20-10:40	100	100	100
04:40-05:00	100	100	100	10:40-11:00	100	100	100
05:00-05:20	100	100	100	11:00-11:20	100	100	100
05:20-05:40	100	100	100	11:20-11:40	100	100	100
05:40-06:00	100	100	100	11:40-12:00	100	100	100

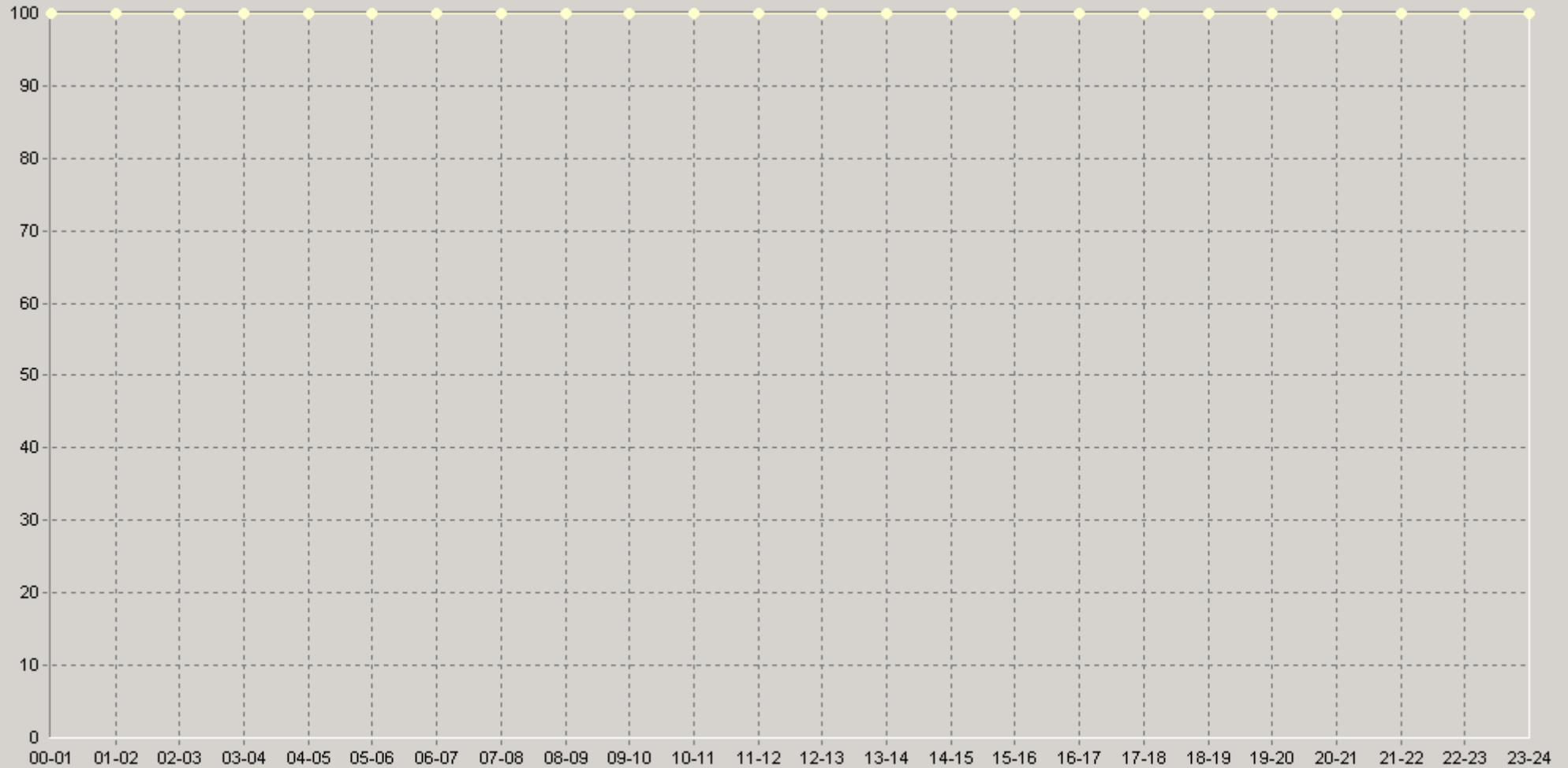
27.04.2008 14:00 - 28.04.2008 15:00

## 2Q AdvAvailabilityTest Node Availability: 62.61.7.3 (%)

		75>	90>			75>	90>
12:00-12:20	100	100	100	18:00-18:20	100	100	100
12:20-12:40	100	100	100	18:20-18:40	100	100	100
12:40-13:00	100	100	100	18:40-19:00	100	100	100
13:00-13:20	100	100	100	19:00-19:20	100	100	100
13:20-13:40	100	100	100	19:20-19:40	100	100	100
13:40-14:00	100	100	100	19:40-20:00	100	100	100
14:00-14:20	100	100	100	20:00-20:20	100	100	100
14:20-14:40	100	100	100	20:20-20:40	100	100	100
14:40-15:00	100	100	100	20:40-21:00	100	100	100
15:00-15:20	100	100	100	21:00-21:20	100	100	100
15:20-15:40	100	100	100	21:20-21:40	100	100	100
15:40-16:00	100	100	100	21:40-22:00	100	100	100
16:00-16:20	100	100	100	22:00-22:20	100	100	100
16:20-16:40	100	100	100	22:20-22:40	100	100	100
16:40-17:00	100	100	100	22:40-23:00	100	100	100
17:00-17:20	100	100	100	23:00-23:20	100	100	100
17:20-17:40	100	100	100	23:20-23:40	100	100	100
17:40-18:00	100	100	100	23:40-00:00	100	100	100

27.04.2008 14:00 - 28.04.2008 15:00

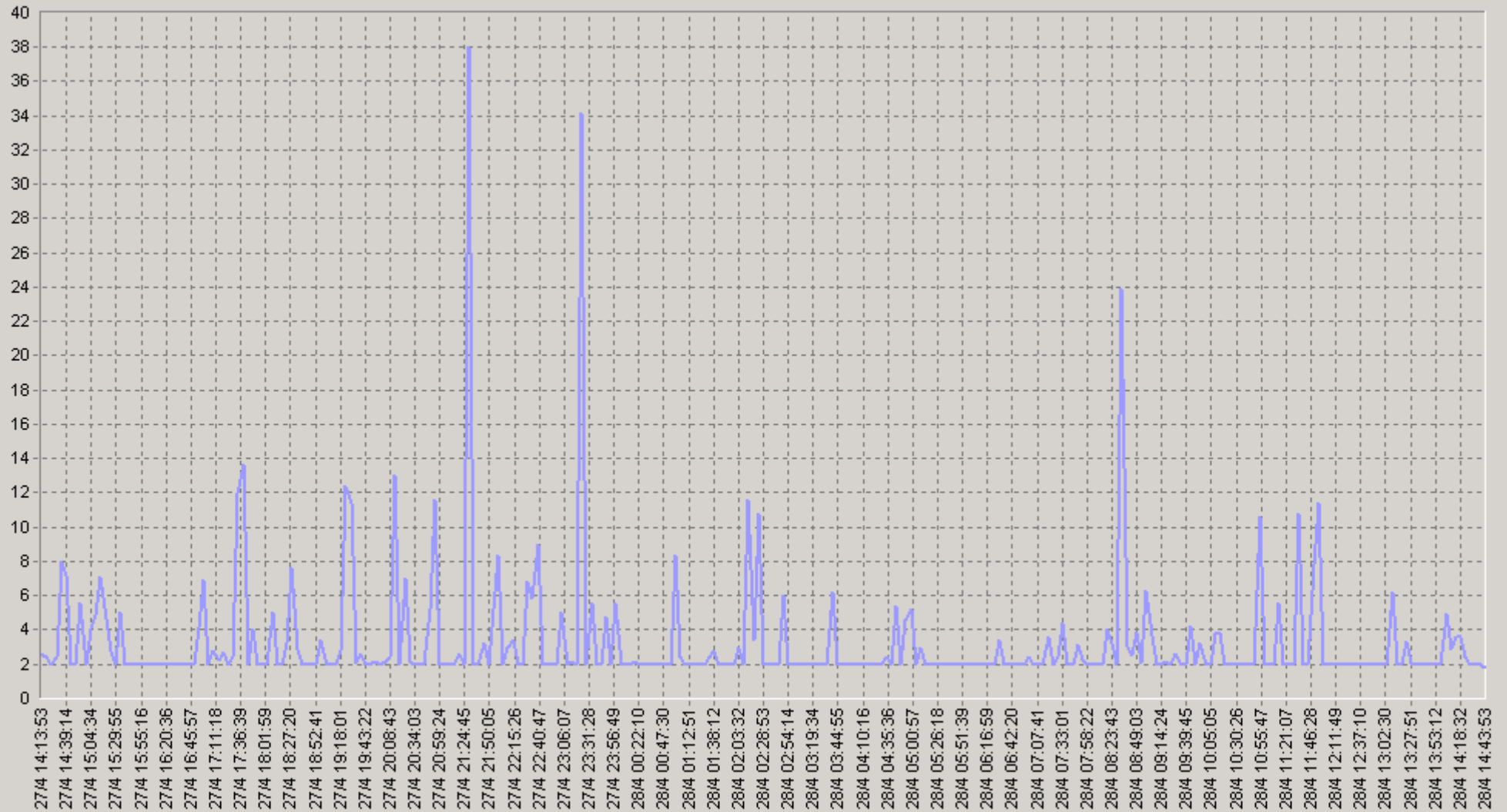
6Q AdvAvailabilityTest Node Availability: 62.61.7.3 (%)



◆ [BaseLine Avg] AdvAvailabilityTest Node Availability: 62.61.7.3 (%)(60)(SLA-ON-SERVER3)  
 ◆ [BaseLine Percnt75 (>)] AdvAvailabilityTest Node Availability: 62.61.7.3 (%)(60)(SLA-ON-SERVER3)  
 ◆ [BaseLine Percnt90 (>)] AdvAvailabilityTest Node Availability: 62.61.7.3 (%)(60)(SLA-ON-SERVER3)

27.04.2008 14:00 - 28.04.2008 15:00

AdvAvailabilityTest Node Response Time: 62.61.7.3 (ms)



— AdvAvailabilityTest Node Response Time: 62.61.7.3 (ms)(SLA-ON-SERVER3)

27.04.2008 14:00 - 28.04.2008 15:00

## 20: AdvAvailabilityTest Node Response Time: 62 61.7.3 (ms)

		75<	90<		75<	90<
00:00-00:20	2,05	2	2	06:00-06:20	2	2
00:20-00:40	2	2	2	06:20-06:40	2,35	2
00:40-01:00	2	2	2	06:40-07:00	2,1	2
01:00-01:20	3,7	2	2	07:00-07:20	2,4	2
01:20-01:40	2,1	2	2	07:20-07:40	2,7	2
01:40-02:00	2,2	2	2	07:40-08:00	2,35	2
02:00-02:20	5	2	7	08:00-08:20	2,5	2
02:20-02:40	4,2	2	2	08:20-08:40	8	3
02:40-03:00	3	2	2	08:40-09:00	3,6	3
03:00-03:20	2	2	2	09:00-09:20	2,6	3
03:20-03:40	3,05	2	2	09:20-09:40	2,15	2
03:40-04:00	2	2	2	09:40-10:00	2,85	2
04:00-04:20	2	2	2	10:00-10:20	2,9	2
04:20-04:40	2,1	2	2	10:20-10:40	2	2
04:40-05:00	4,25	2	15	10:40-11:00	4,15	2
05:00-05:20	2,3	2	3	11:00-11:20	2,9	2
05:20-05:40	2	2	2	11:20-11:40	4,2	2
05:40-06:00	2	2	2	11:40-12:00	5,8	2

27.04.2008 14:00 - 28.04.2008 15:00

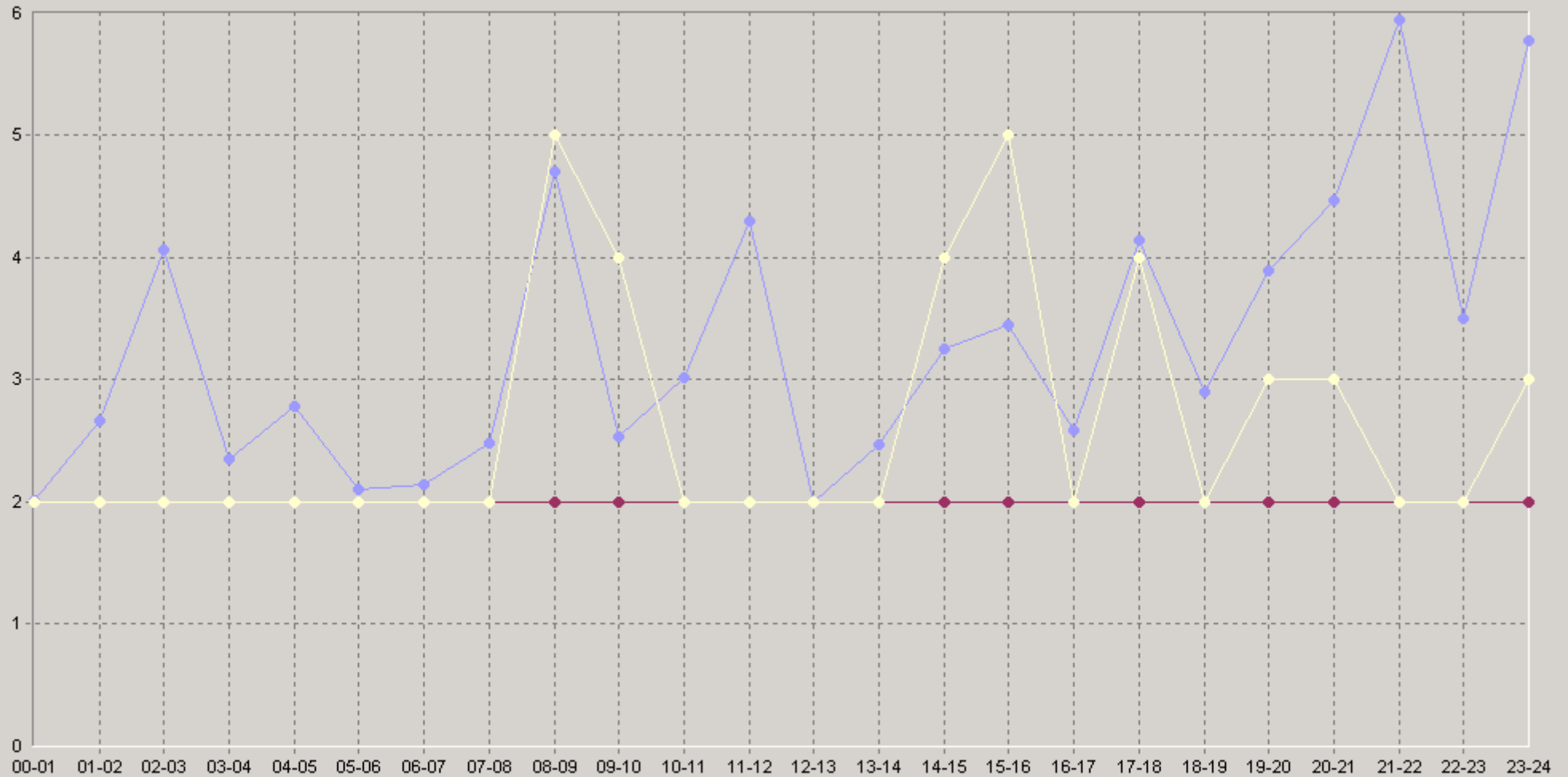
## 20: AdvAvailabilityTest Node Response Time: 62 61.7.3 (ms)

		75<	90<			75<	90<
12:00-12:20	2	2	2	18:00-18:20	2,75	2	2
12:20-12:40	2	2	2	18:20-18:40	3,95	2	4
12:40-13:00	2	2	2	18:40-19:00	2	2	2
13:00-13:20	3,05	2	2	19:00-19:20	2,35	2	2
13:20-13:40	2,35	2	2	19:20-19:40	7,2	2	19
13:40-14:00	2	2	2	19:40-20:00	2,15	2	2
14:00-14:20	3,44	2	7	20:00-20:20	4,9	2	3
14:20-14:40	3,5	2	4	20:20-20:40	3,3	2	3
14:40-15:00	2,68	2	2	20:40-21:00	5,2	2	2
15:00-15:20	6,07	5	13	21:00-21:20	2	2	2
15:20-15:40	2,95	2	2	21:20-21:40	11,2	2	2
15:40-16:00	2	2	2	21:40-22:00	4,7	2	6
16:00-16:20	2	2	2	22:00-22:20	2,6	2	2
16:20-16:40	2	2	2	22:20-22:40	5,9	2	19
16:40-17:00	3,75	2	2	22:40-23:00	2	2	2
17:00-17:20	2,45	2	2	23:00-23:20	2,8	2	2
17:20-17:40	7,5	2	9	23:20-23:40	11	2	3
17:40-18:00	2,5	2	2	23:40-00:00	3,6	2	2



27.04.2008 14:00 - 28.04.2008 15:00

60: AdvAvailabilityTest Node Response Time: 62.61.7.3 (ms)



◆ [BaseLine Avg] AdvAvailabilityTest Node Response Time: 62.61.7.3 (ms)(60)(SLA-ON-SERVER3)  
 ◆ [BaseLine Percnt75 (<)] AdvAvailabilityTest Node Response Time: 62.61.7.3 (ms)(60)(SLA-ON-SERVER3)  
 ◆ [BaseLine Percnt90 (<)] AdvAvailabilityTest Node Response Time: 62.61.7.3 (ms)(60)(SLA-ON-SERVER3)